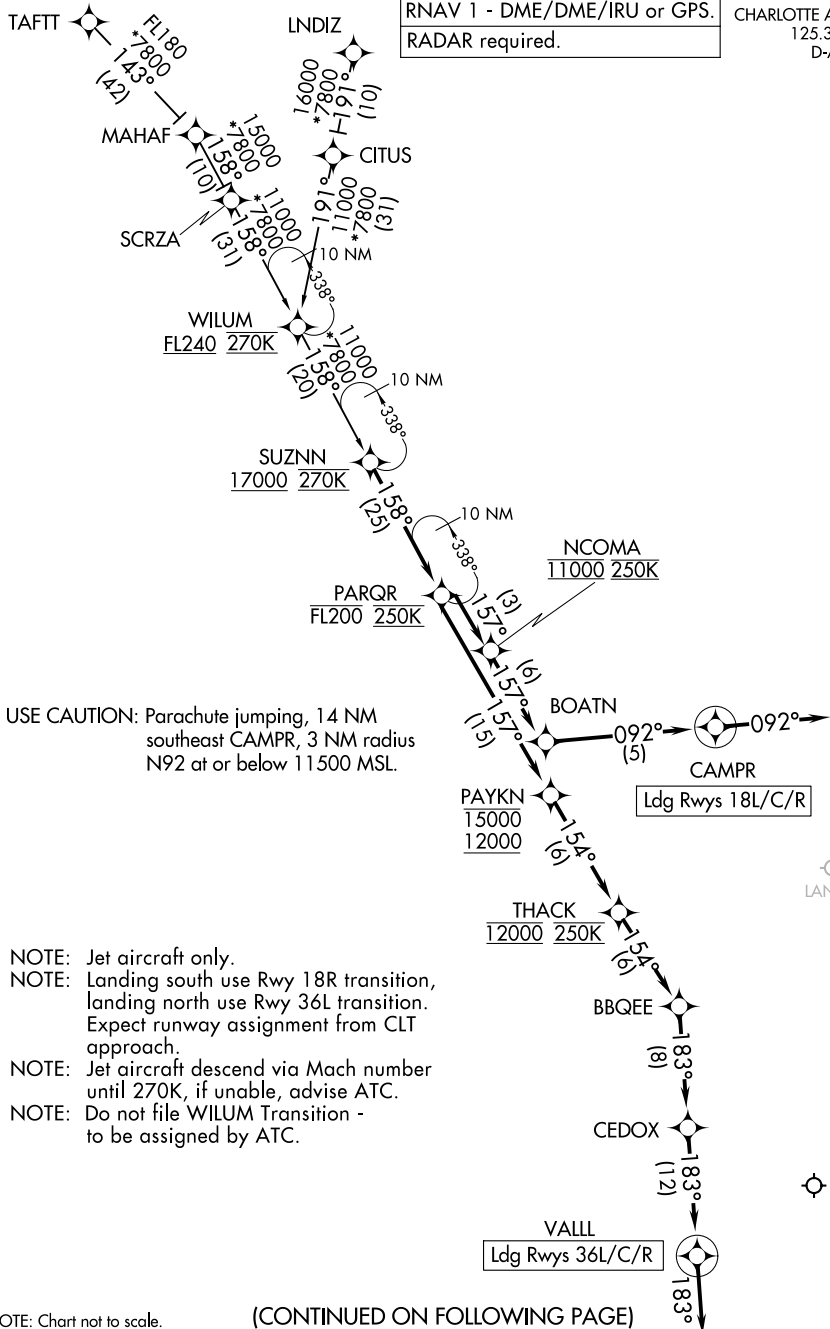


PARQR FOUR ARRIVAL (RNAV)

RNAV 1 - DME/DME/IRU or GPS.
RADAR required.

CHARLOTTE APP CON
125.35 257.2
D-ATIS ARR
121.15



USE CAUTION: Parachute jumping, 14 NM southeast CAMPR, 3 NM radius N92 at or below 11500 MSL.

- NOTE: Jet aircraft only.
- NOTE: Landing south use Rwy 18R transition, landing north use Rwy 36L transition. Expect runway assignment from CLT approach.
- NOTE: Jet aircraft descend via Mach number until 270K, if unable, advise ATC.
- NOTE: Do not file WILUM Transition - to be assigned by ATC.

NOTE: Chart not to scale.

(CONTINUED ON FOLLOWING PAGE)

PARQR FOUR ARRIVAL (RNAV)

SE-2, 31 OCT 2024 to 28 NOV 2024

SE-2, 31 OCT 2024 to 28 NOV 2024