

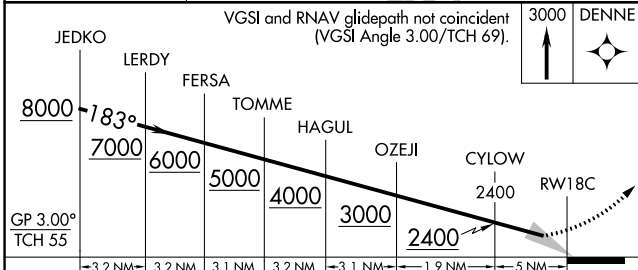
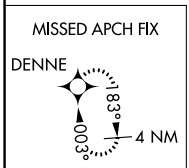
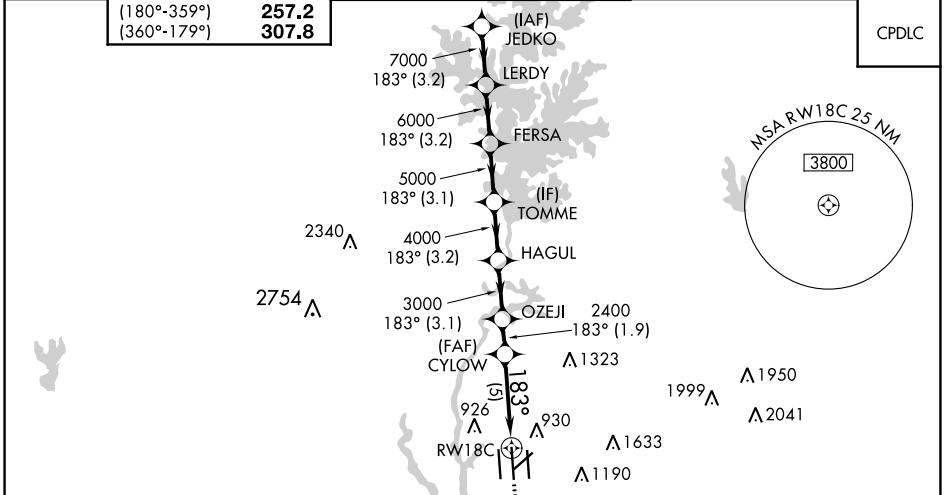
APP CRS	Rwy Idg 10000
183°	TDZE 742
	Apt Elev 748

RNAV (RNP) Z RWY 18C

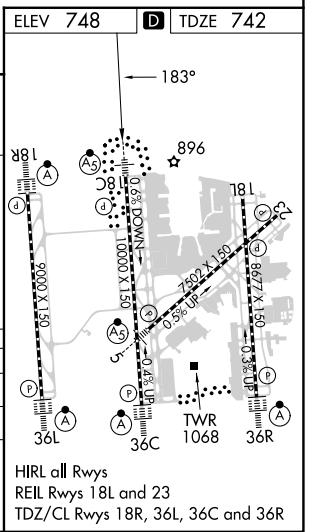
CHARLOTTE/DOUGLAS INTL (CLT)

RNP AR APCH.	MALSRL	MISSED APPROACH: Climb to 3000 direct DENNE and hold.
<p>Simultaneous approach authorized. For uncompensated Baro-VNAV systems, procedure NA below -11°C or above 54°C.</p>		

D-ATIS	CHARLOTTE APP CON	CHARLOTTE TOWER	GND CON	CLNC DEL
ARR 121.15	(001°-119°) 128.325	(Rwys 18L-36R) 118.1 257.8	121.8 348.6 (WEST)	127.15
DEP 132.1	(120°-295°) 120.05	(Rwy 18C-36C) 126.4 257.8	121.9 348.6 (EAST)	348.6
	(296°-360°) 134.75	(Rwy 18R-36L) 133.35 257.8		
	(180°-359°) 257.2			
	(360°-179°) 307.8			



CATEGORY	A	B	C	D
RNP 0.11 DA		1067/26	325 (400-1/2)	
RNP 0.30 DA		1177/40	435 (500-3/4)	



AUTHORIZATION REQUIRED

SE-2, 31 OCT 2024 to 28 NOV 2024

SE-2, 31 OCT 2024 to 28 NOV 2024