

WAAS CH 90100 W36D	APP CRS 003°	Rwy Idg TDZE 727 Apt Elev 748
--	------------------------	---

RNAV (GPS) Y RWY 36R

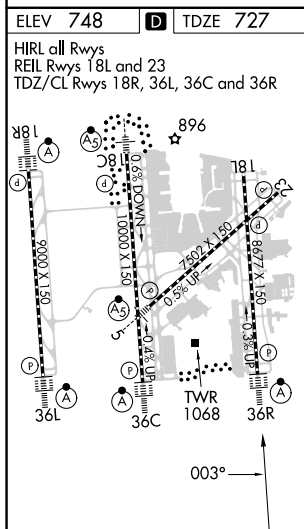
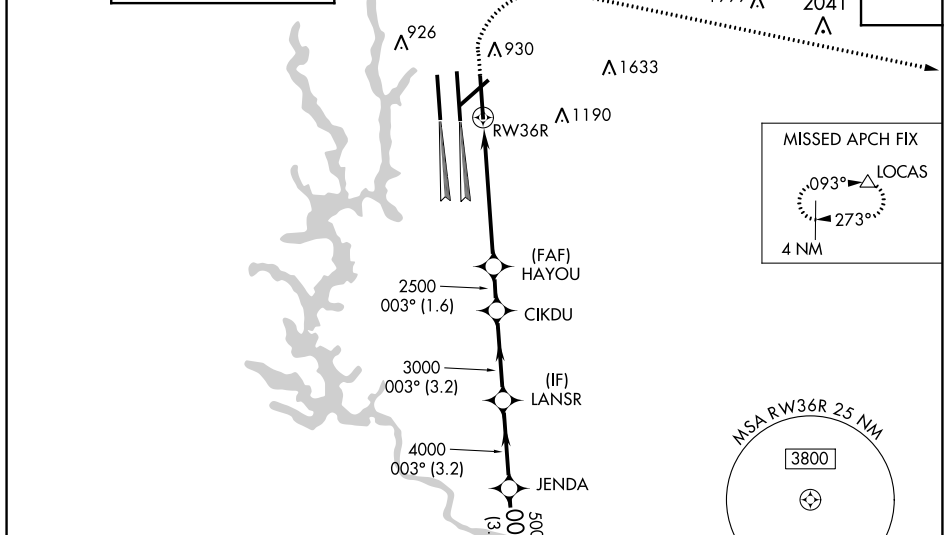
CHARLOTTE/DOUGLAS INTL (CLT)

RNP APCH.

⚠ Circling NA at night. For uncompensated Baro-VNAV systems, LNAV/VNAV NA below -11°C or above 54°C. Simultaneous approach authorized. Use of FD or AP required during simultaneous operations. LNAV procedure NA during simultaneous operations. For inop ALSF, increase LNAV/VNAV all Cats visibility to 1/2 mile.

ALSF-2 	MISSED APPROACH: Climb to 1320 then climbing right turn to 4000 direct LOCAS and hold.
------------	---

D-ATIS ARR 121.15 DEP 132.1	CHARLOTTE APP CON (001°-119°) 128.32 (120°-295°) 120.05 (296°-360°) 134.75 (180°-359°) 257.2 (360°-179°) 307.8	CHARLOTTE TOWER (Rwys 18L-36R) 118.1 257.8 (Rwy 18C-36C) 126.4 257.8 (Rwy 18R-36L) 133.35 257.8	GND CON 121.8 348.6 (WEST) 121.9 348.6 (EAST)	CLNC DEL 127.15 348.6
---	--	---	---	---



1320	4000	LOCAS	VGSi and RNAV glidepath not coincident (VGSi Angle 3.00/TCH 74).		HEKAM
*LNAV only.		*1.6 NM to RWY36R		JENDA	HEKAM
RWY36R		HAYOU	CIKDU	LANSR	JENDA
1.6		3.8 NM	1.6 NM	3.2 NM	3.2 NM
2500		3000	4000	5000	6000
GP 3.00°		TCH 55			
CATEGORY	A	B	C	D	
LPV DA	927/18		200 (200-1/2)		
LNAV/VNAV DA	1229-1 1/4		502 (500-1 1/4)		
LNAV MDA	1320/24	593 (600-1/2)	1320-1 1/4	593 (600-1 1/4)	
C CIRCLING	1380-1	632 (700-1)	1500-2 1/4	1500-2 1/2	
			752 (800-2 1/4)	752 (800-2 1/2)	

SE-2, 31 OCT 2024 to 28 NOV 2024

SE-2, 31 OCT 2024 to 28 NOV 2024