

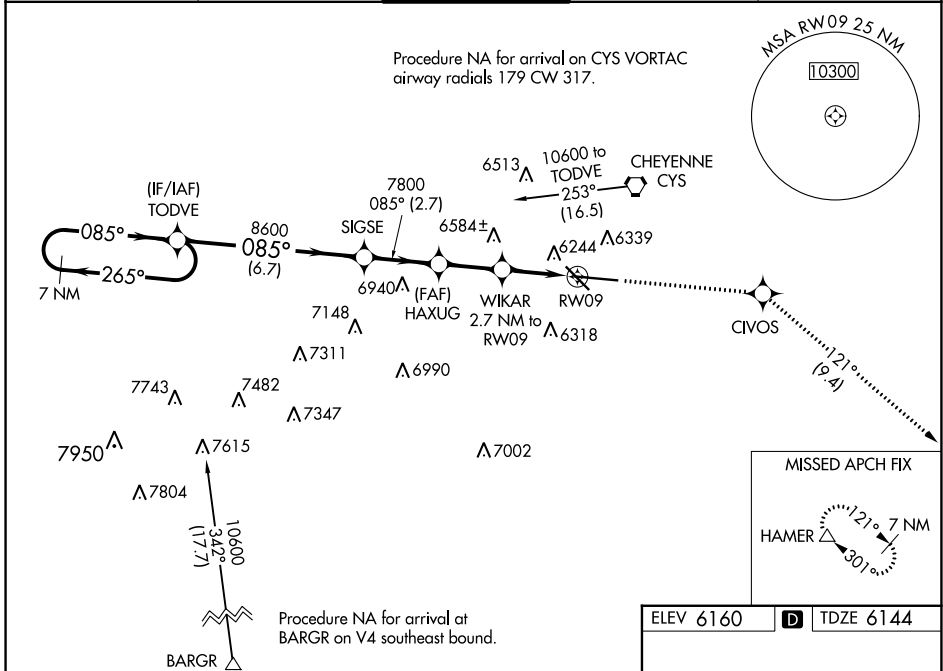
WAAS CH <b>73009</b> <b>W09A</b>	APP CRS <b>085°</b>	Rwy Idg TDZE <b>6144</b> Apt Elev <b>6160</b>	<b>7985</b>
--	------------------------	---	-------------

# RNAV (GPS) RWY 9

CHEYENNE RGNL/JERRY OLSON FLD (CYS)

<p><b>⚠</b> For uncompensated Baro-VNAV systems, LNAV/VNAV NA below -27°C (-16°F) or above 36°C (96°F). DME/DME RNP-0.3 NA. Rwy 9 helicopter visibility reduction below ¾ SM NA.</p>	<p>MISSED APPROACH: Climb to 8500 direct CIVOS and on track 121° to HAMER and hold.</p>		
	<p>ATIS <b>134.425 278.3</b></p>	<p>CHEYENNE APP CON* <b>124.55 263.075</b></p>	<p><b>CHEYENNE TOWER*</b> <b>118.7(CTAF) 0 257.8</b></p>

ATIS <b>134.425 278.3</b>	CHEYENNE APP CON* <b>124.55 263.075</b>	<b>CHEYENNE TOWER*</b> <b>118.7(CTAF) 0 257.8</b>	GND CON <b>121.9 254.275</b>	UNICOM <b>122.95</b>
------------------------------	--	--	---------------------------------	-------------------------



7 NM Holding Pattern	TODVE	SIGSE	HAXUG	WIKAR 2.7 NM to RW09	*RNAV only
10600 ← 265°	← 085°	8600	7800	*1.1 NM to RW09	
GP 3.00° TCH 50		7800	*7060		
	6.7 NM	2.7 NM	2.3 NM	1.6 NM	1.1
CATEGORY	A	B	C	D	
LPV DA	6473-1¼		329 (400-1¼)		
LNAV/VNAV DA	6543-1½		399 (400-1½)		
LNAV MDA	6540-1		396 (400-1)		6540-1¼ 396 (400-1¼)
<b>C</b> CIRCLING	6640-1 480 (500-1)		6900-2 740 (800-2)		6940-2½ 780 (800-2½)

ELEV 6160 **D** TDZE 6144

MISSED APCH FIX  
HAMER 121° 7 NM  
301°

REIL Rwy 9, 13, and 31  
HIRL Rwy 9-27  
MIRL Rwy 13-31

NW-1, 31 OCT 2024 to 28 NOV 2024

NW-1, 31 OCT 2024 to 28 NOV 2024