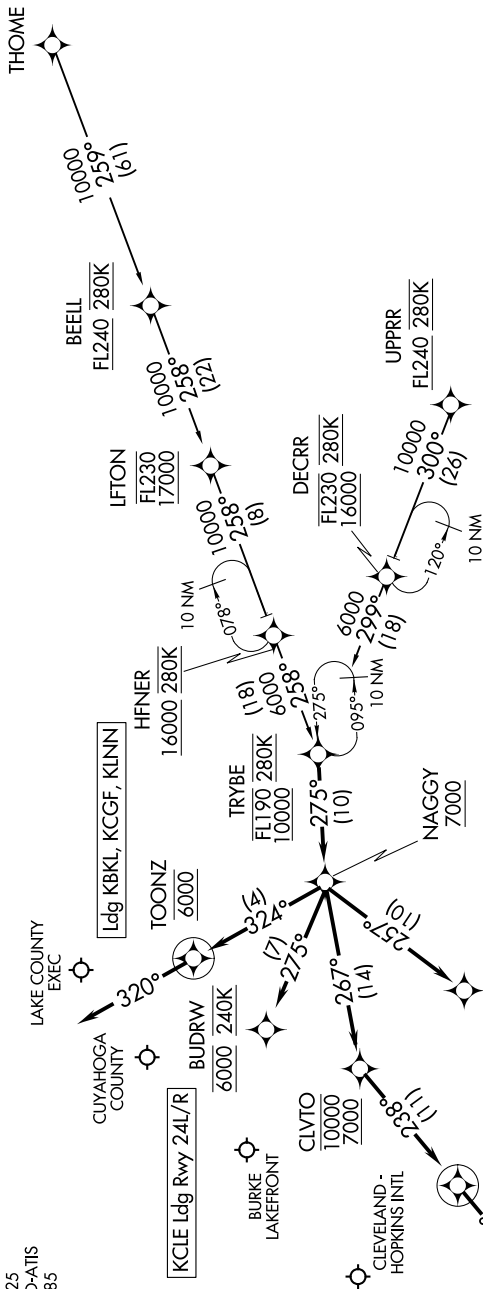


TRYBE FOUR ARRIVAL (RNAV)

CLEVELAND, OHIO

EC-2, 31 OCT 2024 to 28 NOV 2024

CLEVELAND APP CON
 126.55 346.325
 BKL ATIS
 125.25
 CLE D-ATIS
 127.85



NOTE: RADAR required.

NOTE: RNAV 1.

NOTE: DME/DME/IRU or GPS required.

NOTE: Jet aircraft expect "descend via" clearance from Cleveland Center.

NOTE: Jet aircraft descend via MACH number until intercepting 280K. Maintain 280K until slowed by the STAR.

NOTE: CLE LANDING SOUTH: Use Rwy 24R transition, expect runway assignment from Cleveland APP CON no later than TRYBE.

NOTE: CLE LANDING NORTH: Use Rwy 6L transition, expect runway assignment from Cleveland APP CON no later than TRYBE.

NOTE: LFTON Transition: Except for flights originating in Canada, do not file, to be assigned by ATC.

(NARRATIVE ON FOLLOWING PAGE)

NOTE: Chart not to scale.

TRYBE FOUR ARRIVAL (RNAV)

(TRYBE.TRYBE4) 26MAR20

CLEVELAND, OHIO

EC-2, 31 OCT 2024 to 28 NOV 2024