


WAAS CH 40299 W10B	APP CRS 101°	Rwy Idg TDZE Apt Elev	8000 815 815
--	------------------------	-----------------------------	---

RNAV (GPS) Y RWY 10L

JOHN GLENN COLUMBUS INTL (CMH)

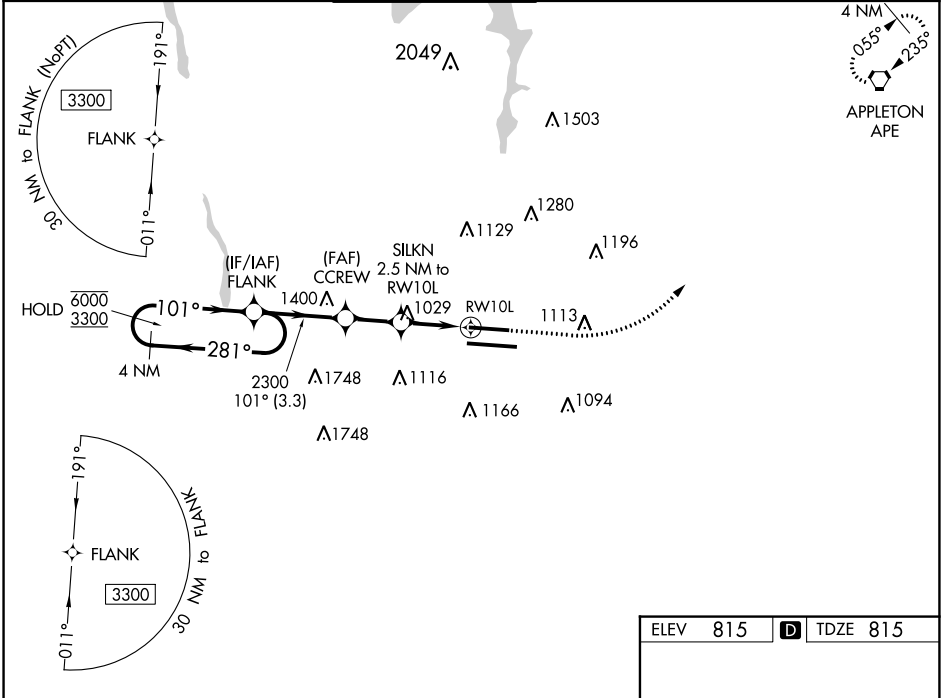
RNP APCH

▼ For uncompensated Baro-VNAV systems, LNAV/VNAV NA below -19°C or above 54°C.
 ▲ LNAV procedure NA during simultaneous operations. Use of FD or AP providing RNAV track guidance required during simultaneous operations. Simultaneous approach authorized. For inop ALS, increase LNAV Cat C/D visibility to 1½ SM.
 # RVR 1800 authorized with use of FD or AP or HUD to DA.

MALSRL


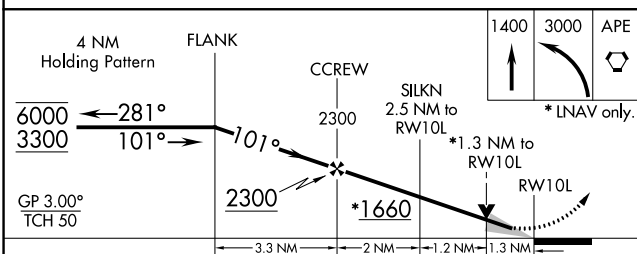
MISSED APPROACH:
 Climb to 1400 then climbing left turn to 3000 direct APE VORTAC and hold.

D-ATIS 124.6	COLUMBUS APP CON 125.95 371.975	COLUMBUS TOWER 132.7 257.8	GND CON 121.9 348.6	CLNC DEL 126.3	CPDLC
------------------------	---	---	-------------------------------	--------------------------	-------



EC-2, 31 OCT 2024 to 28 NOV 2024

EC-2, 31 OCT 2024 to 28 NOV 2024



ELEV 815	D TDZE 815
----------	-------------------

TWR 1026
 10114 X 150
 8000 X 150
 218

CATEGORY	A	B	C	D
LPV DA #		1015/24	200 (200-½)	
LNAV/VNAV DA		1197/35	382 (400-⅓)	
LNAV MDA	1280/24	465 (500-½)	1280/50	465 (500-1)
C CIRCLING	1340-1	525 (600-1)	1520-2 705 (800-2)	1520-2¼ 705 (800-2¼)