

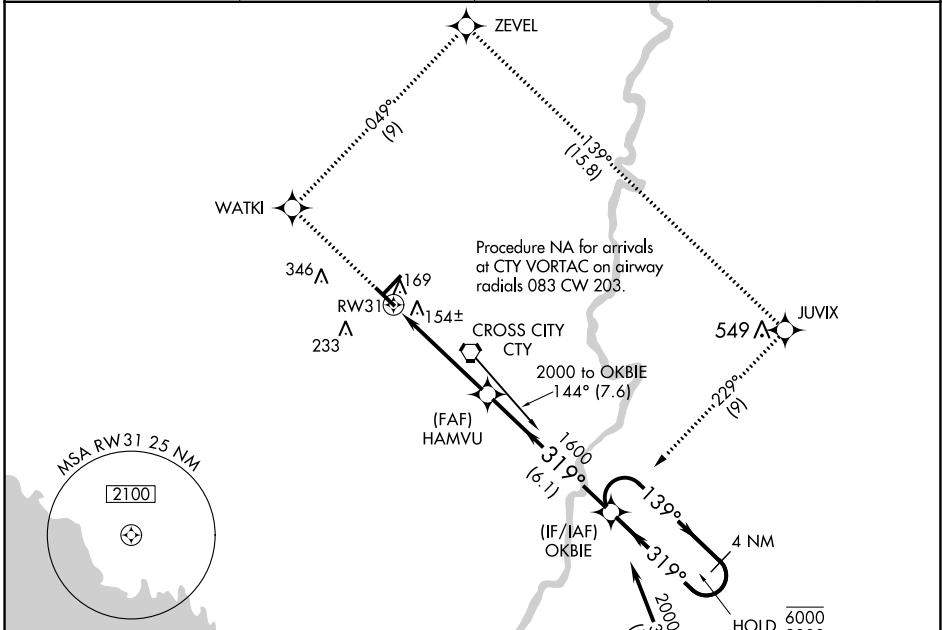
WAAS CH 45620 W31A	APP CRS 319°	Rwy Idg TDZE Apt Elev	5001 42 42
--	------------------------	-----------------------------	---------------------------------------

RNAV (GPS) RWY 31

CROSS CITY (CTY)

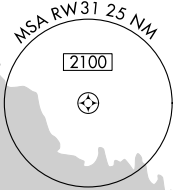
RNP APCH.	<p>Procedure NA at night. Rwy 31 helicopter visibility reduction below 1 SM NA. Baro-VNAV NA. Use Williston altimeter setting; when not received, use NA Gainesville altimeter setting and increase all DA 25 feet and all MDA 40 feet.</p>	<p>MISSED APPROACH: Climb to 2000 direct WATKI and right turn on track 049° to ZEVEL and on track 139° to JUVIX and right turn on track 229° to OKBIE and hold.</p>
-----------	---	---

AWOS-3PT 120.775	X60 AWOS-3T 118.425	JACKSONVILLE CENTER 127.8 352.0	UNICOM 122.8 (CTAF)
----------------------------	-------------------------------	---	-------------------------------

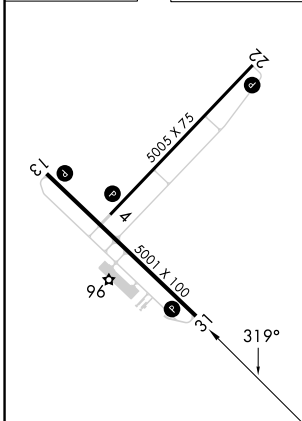


SE-3, 31 OCT 2024 to 28 NOV 2024

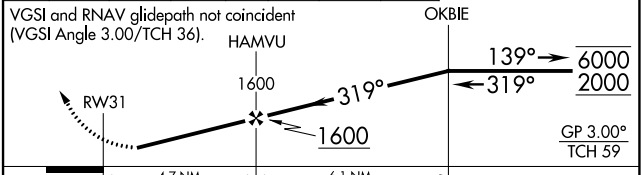
SE-3, 31 OCT 2024 to 28 NOV 2024



ELEV 42	TDZE 42
---------	---------



2000	WATKI	ZEVEL	JUVIX	OKBIE	4 NM Holding Pattern
↑	tr 049°	tr 139°	tr 229°		



CATEGORY	A	B	C	D
LPV DA		383-1¼	341 (400-1¼)	
LNVA/VNAV DA		546-1¾	504 (600-1¾)	
LNVA MDA	580-1	538 (600-1)	580-1½ 538 (600-1½)	580-1¾ 538 (600-1¾)

MIRL Rwy 13-31
MIRL Rwy 4-22
REIL Rwy 13 and 31