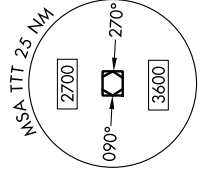


BACHMAN ONE DEPARTURE

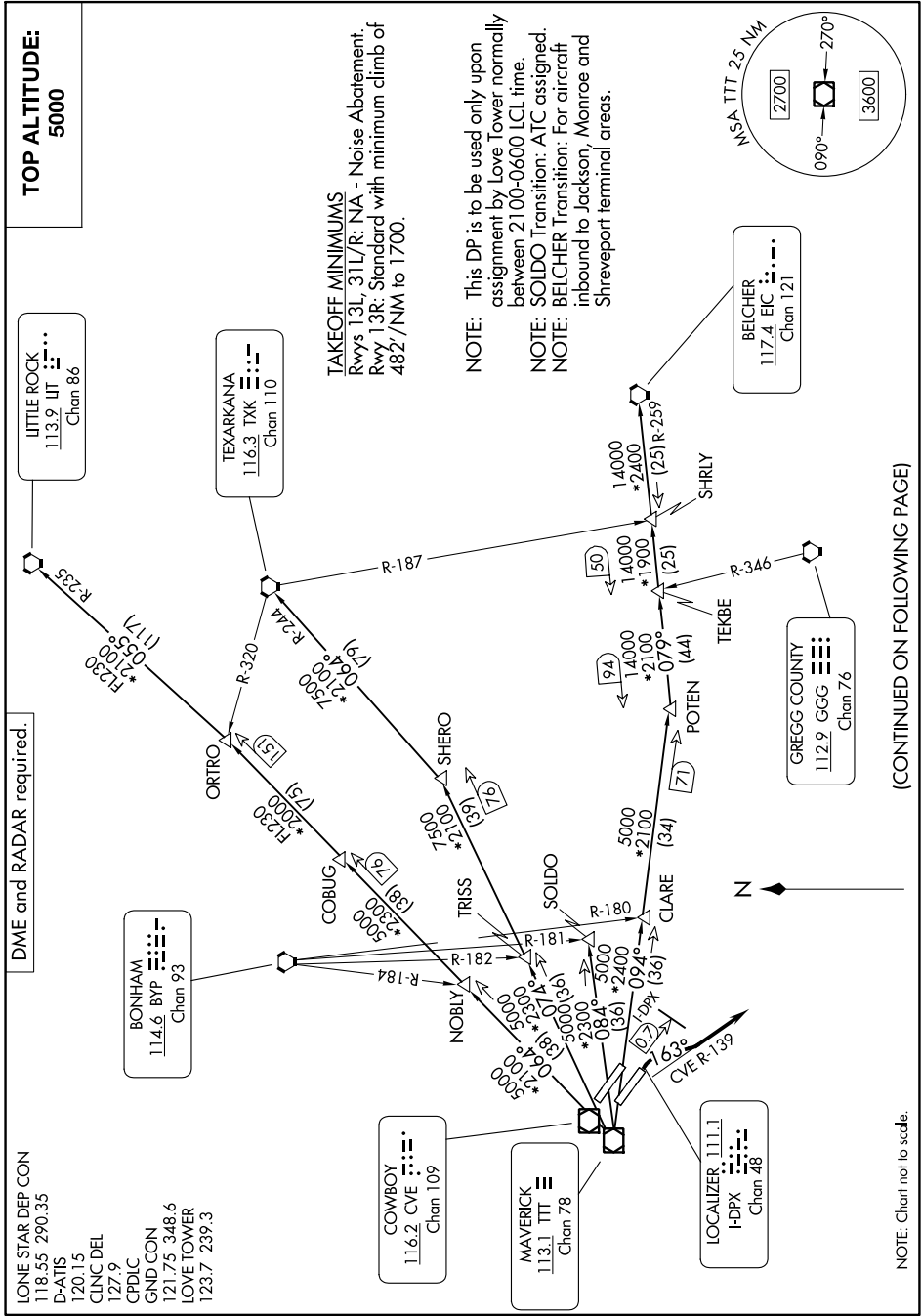
**TOP ALTITUDE:
5000**

TAKEOFF MINIMUMS
Rwys 13L, 31L/R: NA - Noise Abatement.
Rwy 13R: Standard with minimum climb of 482'/NM to 1700.

NOTE: This DP is to be used only upon assignment by Love Tower normally between 2100-0600 LCL time.
NOTE: SOLDO Transition: ATC assigned.
NOTE: BELCHER Transition: For aircraft inbound to Jackson, Monroe and Shreveport terminal areas.



SC-2, 31 OCT 2024 to 28 NOV 2024



DME and RADAR required.

- LONE STAR DEP CON 118.55 290.35
- D-ATIS 120.15
- CLINC DEL 127.9
- CPDLC 121.75 348.6
- GND CON 123.7 239.3
- LOVE TOWER



(CONTINUED ON FOLLOWING PAGE)

NOTE: Chart not to scale.

BACHMAN ONE DEPARTURE

SC-2, 31 OCT 2024 to 28 NOV 2024