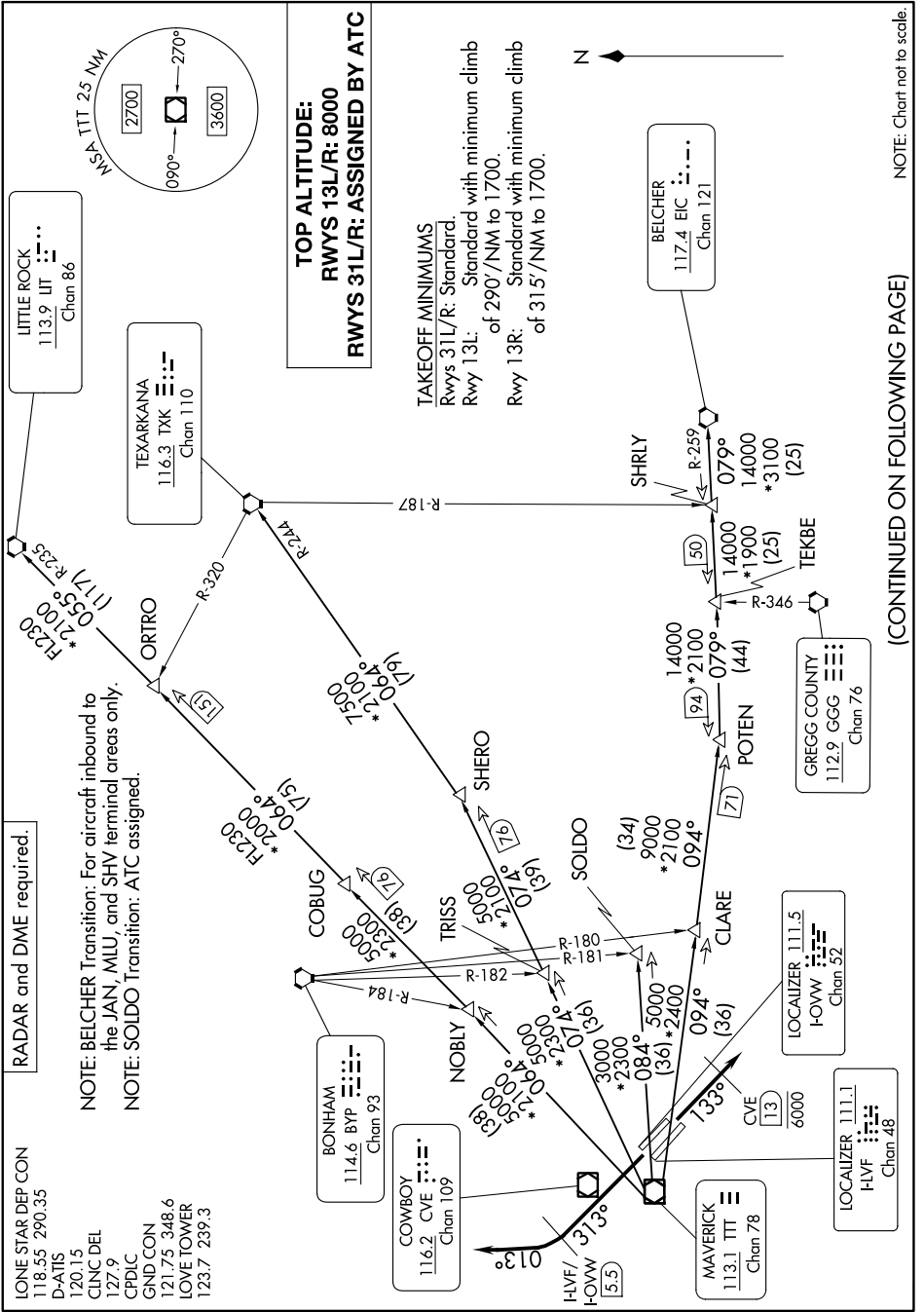


DALLAS THREE DEPARTURE

SC-2, 31 OCT 2024 to 28 NOV 2024



RADAR and DME required.

LONE STAR DEP CON 118.55 290.35
 D-ATIS 120.15
 CLNC DEL 127.9
 CPDLC
 GND CON 121.75 348.6
 LOVE TOWER 123.7 239.3

NOTE: BEICHER Transition: For aircraft inbound to the JAN, MLJ, and SHV terminal areas only.
 NOTE: SOLDO Transition: ATC assigned.

**TOP ALTITUDE:
 RWYS 13L/R: 8000
 RWYS 31L/R: ASSIGNED BY ATC**

TAKEOFF MINIMUMS
 Rwys 31L/R: Standard.
 Rwy 13L: Standard with minimum climb of 290°/NM to 1700.
 Rwy 13R: Standard with minimum climb of 315°/NM to 1700.

NOTE: Chart not to scale.

(CONTINUED ON FOLLOWING PAGE)

SC-2, 31 OCT 2024 to 28 NOV 2024

DALLAS THREE DEPARTURE