

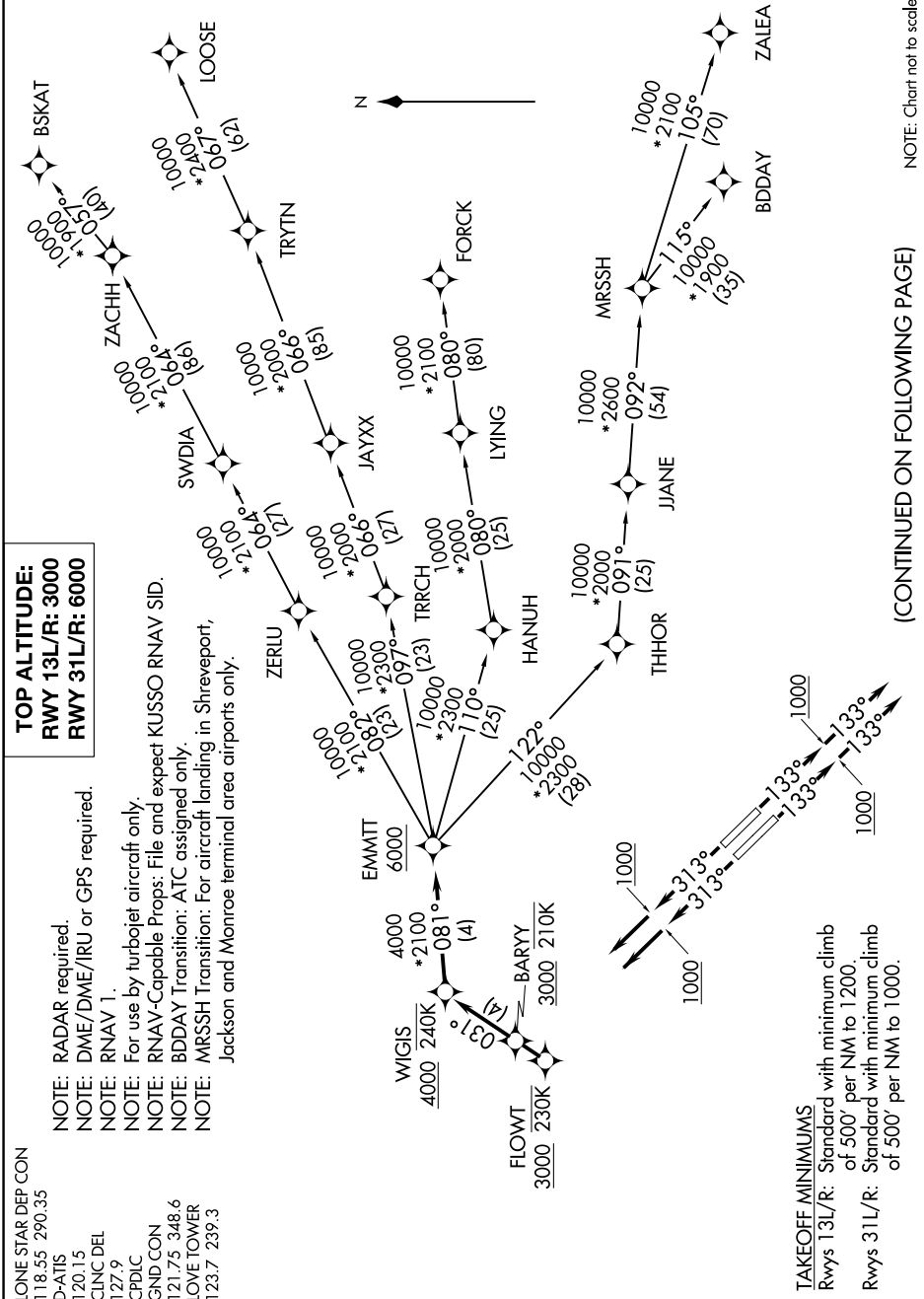
# EMMTT FOUR DEPARTURE (RNAV)

SC-2, 31 OCT 2024 to 28 NOV 2024

LONE STAR DEP CON  
118.55 290.35  
D-ATIS  
120.15  
CLNC DEL  
127.9  
CPDLC  
GND CON  
121.75 348.6  
LOVE TOWER  
123.7 239.3

**TOP ALTITUDE:  
RWY 13L/R: 3000  
RWY 31L/R: 6000**

NOTE: RADAR required.  
NOTE: DME/DME/IRU or GPS required.  
NOTE: RNAV 1.  
NOTE: For use by turbojet aircraft only.  
NOTE: RNAV-Capable Props: File and expect KUSSO RNAV SID.  
NOTE: BDDAY Transition: ATC assigned only.  
NOTE: MRSSH Transition: For aircraft landing in Shreveport, Jackson and Monroe terminal area airports only.



NOTE: Chart not to scale.

(CONTINUED ON FOLLOWING PAGE)

SC-2, 31 OCT 2024 to 28 NOV 2024

# EMMTT FOUR DEPARTURE (RNAV)

**TAKEOFF MINIMUMS**  
Rwys 13L/R: Standard with minimum climb of 500' per NM to 1200.  
Rwys 31L/R: Standard with minimum climb of 500' per NM to 1000.