

# ESNYE SEVEN DEPARTURE (RNAV)

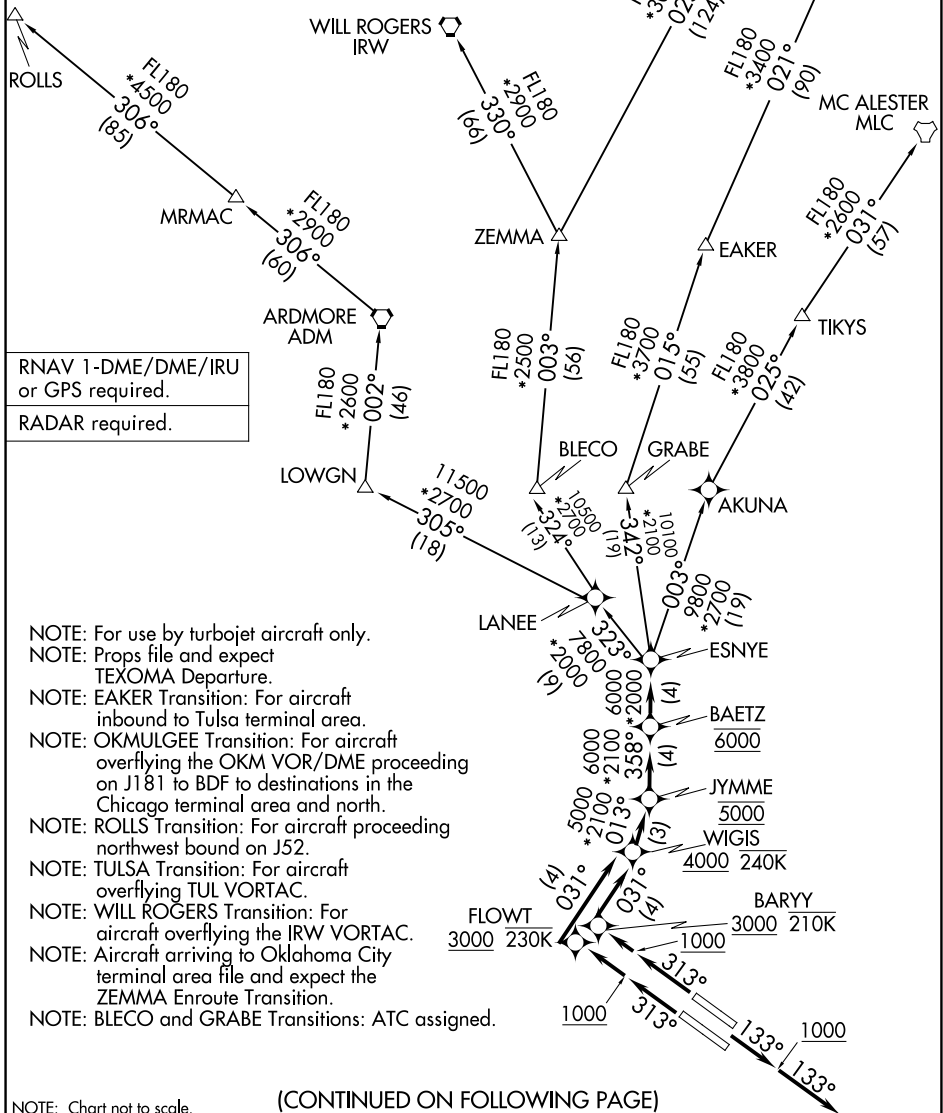
DALLAS, TEXAS

LONE STAR DEP CON  
 118.55 290.35  
 D-ATIS  
 120.15  
 CLNC DEL  
 127.9  
 CPDLC  
 GND CON  
 121.75 348.6  
 LOVE TOWER  
 123.7 239.3

**TOP ALTITUDE:  
 6000**

### TAKEOFF MINIMUMS

Rwys 13L/R: Standard with minimum climb  
 of 500' per NM to 1200.  
 Rwys 31L/R: Standard with minimum climb  
 of 500' per NM to 1000.



RNAV 1-DME/DME/IRU  
 or GPS required.  
 RADAR required.

- NOTE: For use by turbojet aircraft only.
- NOTE: Props file and expect TEXOMA Departure.
- NOTE: EAKER Transition: For aircraft inbound to Tulsa terminal area.
- NOTE: OKMULGEE Transition: For aircraft overflying the OKM VOR/DME proceeding on J181 to BDF to destinations in the Chicago terminal area and north.
- NOTE: ROLLS Transition: For aircraft proceeding northwest bound on J52.
- NOTE: TULSA Transition: For aircraft overflying TUL VORTAC.
- NOTE: WILL ROGERS Transition: For aircraft overflying the IRW VORTAC.
- NOTE: Aircraft arriving to Oklahoma City terminal area file and expect the ZEMMA Enroute Transition.
- NOTE: BLECO and GRABE Transitions: ATC assigned.

NOTE: Chart not to scale.

(CONTINUED ON FOLLOWING PAGE)

# ESNYE SEVEN DEPARTURE (RNAV)

DALLAS, TEXAS

SC-2, 31 OCT 2024 to 28 NOV 2024

SC-2, 31 OCT 2024 to 28 NOV 2024