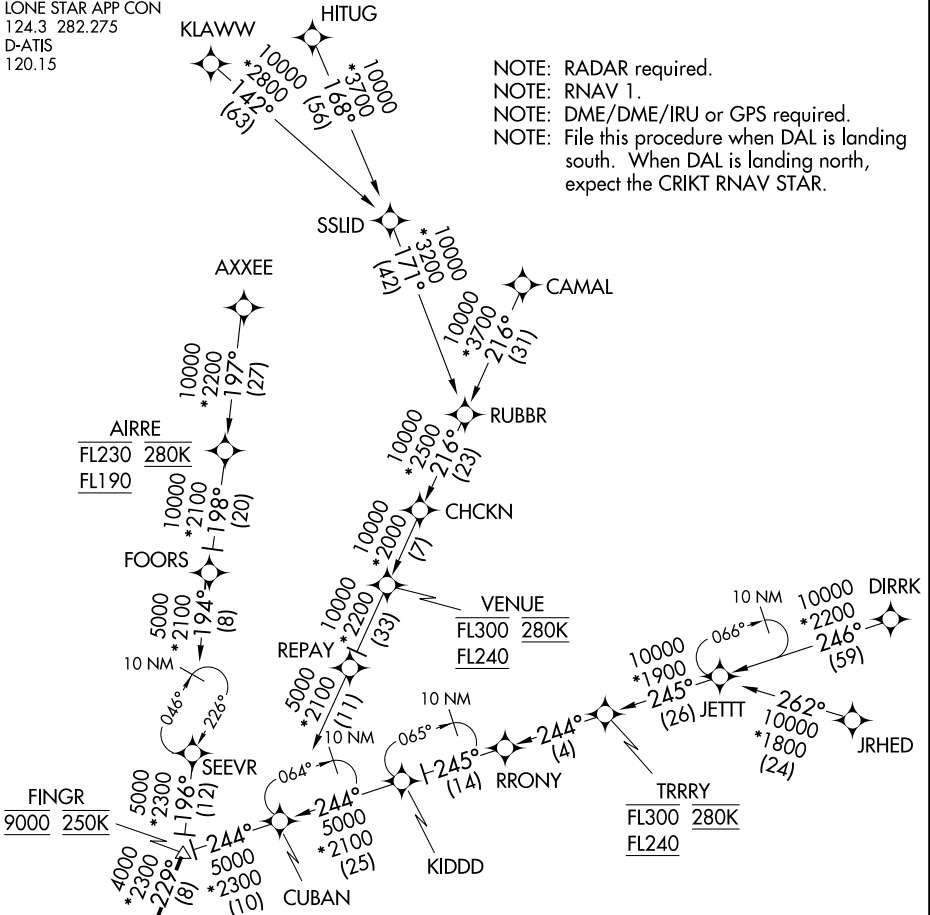


# HIBIL THREE ARRIVAL (RNAV)

LONE STAR APP CON  
124.3 282.275  
D-ATIS  
120.15

NOTE: RADAR required.  
NOTE: RNAV 1.  
NOTE: DME/DME/IRU or GPS required.  
NOTE: File this procedure when DAL is landing south. When DAL is landing north, expect the CRIKT RNAV STAR.



NOTE: JRHED, RUBBR, and JETT Transitions: ATC assigned only.  
NOTE: AXXEE and RRONY Transitions: For aircraft filing FL230 and below.  
NOTE: AIRRE Transition: For traffic at or below FL190 only.  
NOTE: Aircraft departing the Oklahoma City terminal area file and expect the AIRRE enroute transition.

### ARRIVAL ROUTE DESCRIPTION

<u>AIRRE TRANSITION (AIRRE.HIBIL3)</u>	<u>JETT TRANSITION (JETT.HIBIL3)</u>
<u>AXXEE TRANSITION (AXXEE.HIBIL3)</u>	<u>JRHED TRANSITION (JRHED.HIBIL3)</u>
<u>CAMAL TRANSITION (CAMAL.HIBIL3)</u>	<u>KLAWW TRANSITION (KLAWW.HIBIL3)</u>
<u>DIRRK TRANSITION (DIRRK.HIBIL3)</u>	<u>RRONY TRANSITION (RRONY.HIBIL3)</u>
<u>HITUG TRANSITION (HITUG.HIBIL3)</u>	<u>RUBBR TRANSITION (RUBBR.HIBIL3)</u>

From FINGR on track 229° to SLANT, then on track 232° to HIBIL, then on track 232°. Expect RADAR vectors to final approach course.

NOTE: Chart not to scale.

# HIBIL THREE ARRIVAL (RNAV)

SC-2, 31 OCT 2024 to 28 NOV 2024

SC-2, 31 OCT 2024 to 28 NOV 2024