

LOC/DME I-OVW 111.5 Chan 52	APP CRS 313°	Rwy Idg TDZE Apt Elev	6952 487 487
---	------------------------	-----------------------------	---

ILS RWY 31R (SA CAT I & II)

DALLAS LOVE FLD (DAL)

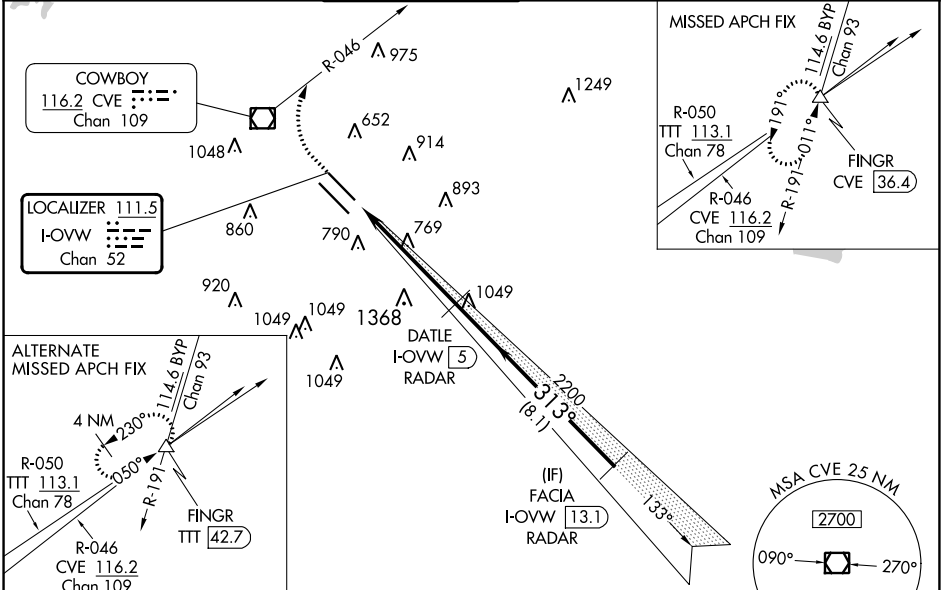
RADAR required for procedure entry.

Simultaneous approach authorized.
SA CAT I/II: Requires specific OPSPEC, MSPEC or LOA approval.

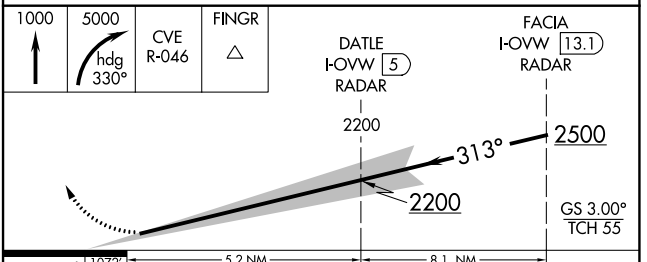
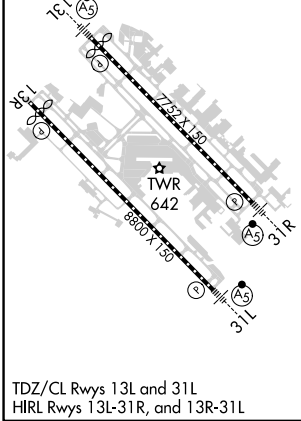
MALSR
AS

MISSED APPROACH: Climb to 1000 then climbing right turn to 5000 on heading 330° and CVE VOR/DME R-046 to FINGR INT/CVE 36.4 DME and hold.

D-ATIS 120.15	LONE STAR APP CON NORTH 124.3 282.275 SOUTH 125.2 343.65	LOVE TOWER 123.7 239.3	GND CON 121.75 348.6	CLNC DEL 127.9	CPDLC
-------------------------	--	----------------------------------	--------------------------------	--------------------------	-------



ELEV 487	D	TDZE 487
-----------------	----------	-----------------



CATEGORY	A	B	C	D
S-ILS 31R	SA CAT I	RA 151/14	150 DA 637	
S-ILS 31R	SA CAT II	RA 98/12	100 DA 587	

SA CATEGORY I & II ILS - SPECIAL AIRCREW & AIRCRAFT CERTIFICATION REQUIRED

SC-2, 31 OCT 2024 to 28 NOV 2024

SC-2, 31 OCT 2024 to 28 NOV 2024