

LOC/DME I-DPX 111.1 Chan 48	APP CRS 133°	Rwy ldg TDZE Apt Elev 8310 479 487
---	------------------------	--

ILS Y or LOC Y RWY 13R

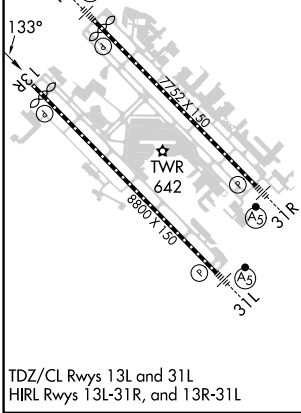
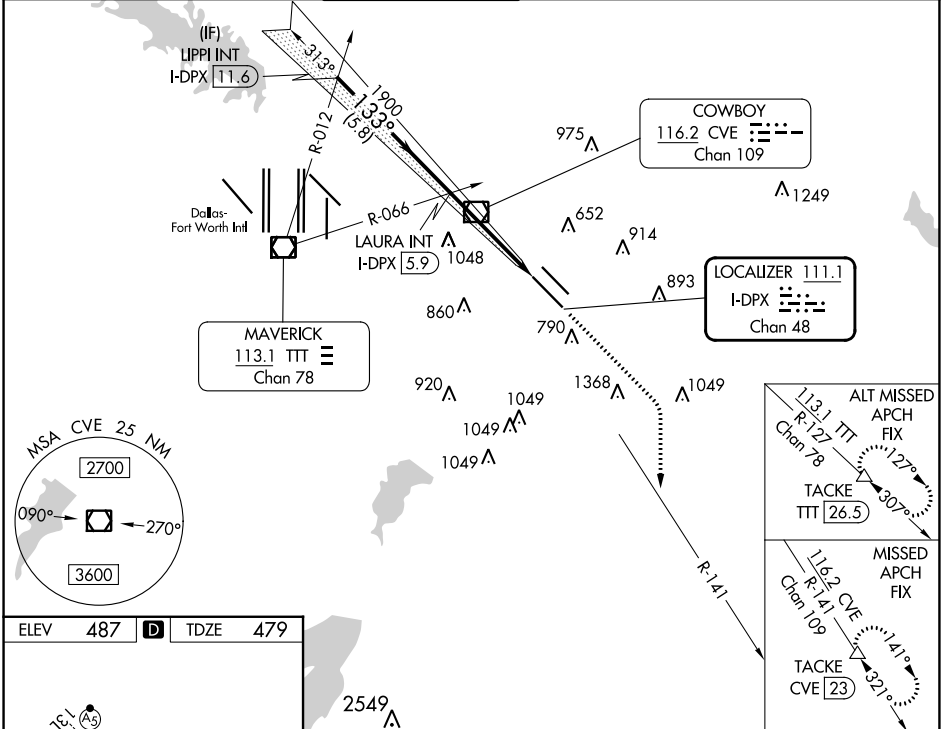
DALLAS LOVE FLD (DAL)

DME required.
RADAR required for procedure entry.

Simultaneous approach authorized.

MISSED APPROACH: Climb to 1000 then climbing right turn to 3000 on heading 150° and CVE VOR/DME R-141 to TACKE/CVE 23 DME and hold.

D-ATIS 120.15	LONE STAR APP CON NORTH 124.3 282.275 SOUTH 125.2 343.65	LOVE TOWER 123.7 239.3	GND CON 121.75 348.6	CLNC DEL 127.9	CPDLC
-------------------------	--	----------------------------------	--------------------------------	--------------------------	-------



LIPPI INT I-DPX 11.6	VGSI and ILS glidepath not coincident (VGSI angle 3.00/TCH 52).		1000	3000	CVE R-141	TACKE																		
LAURA INT I-DPX 5.9	2500	1900	1900	1900	1900	1900																		
GS 3.00° TCH 47	5.8 NM	2.9 NM	1.4 NM																					
<table border="1"> <tr> <th>CATEGORY</th> <th>A</th> <th>B</th> <th>C</th> <th>D</th> </tr> <tr> <td>S-ILS 13R</td> <td colspan="4">679/40 200 (200-3/4)</td> </tr> <tr> <td>S-LOC 13R</td> <td>960/55</td> <td>481 (500-1)</td> <td>960-13/8</td> <td>481 (500-13/8)</td> </tr> <tr> <td>CIRCLING</td> <td>1080-1 593 (600-1)</td> <td>1140-1 653 (700-1)</td> <td>1220-2 733 (800-2)</td> <td>1520-3 1033 (1100-3)</td> </tr> </table>	CATEGORY	A	B	C	D	S-ILS 13R	679/40 200 (200-3/4)				S-LOC 13R	960/55	481 (500-1)	960-13/8	481 (500-13/8)	CIRCLING	1080-1 593 (600-1)	1140-1 653 (700-1)	1220-2 733 (800-2)	1520-3 1033 (1100-3)				
CATEGORY	A	B	C	D																				
S-ILS 13R	679/40 200 (200-3/4)																							
S-LOC 13R	960/55	481 (500-1)	960-13/8	481 (500-13/8)																				
CIRCLING	1080-1 593 (600-1)	1140-1 653 (700-1)	1220-2 733 (800-2)	1520-3 1033 (1100-3)																				

SC-2, 31 OCT 2024 to 28 NOV 2024

SC-2, 31 OCT 2024 to 28 NOV 2024