

JOE POOL SEVEN DEPARTURE

LONE STAR DEP CON
 125.125 353.95 (Rwys 13L/R)
 118.55 290.35 (Rwys 31L/R)
 D-ATIS 120.15
 CLNC DEL 127.9
 CPDLC
 GND CON 121.75 348.6
 LOVE TOWER 123.7 239.3

RADAR and DME required.

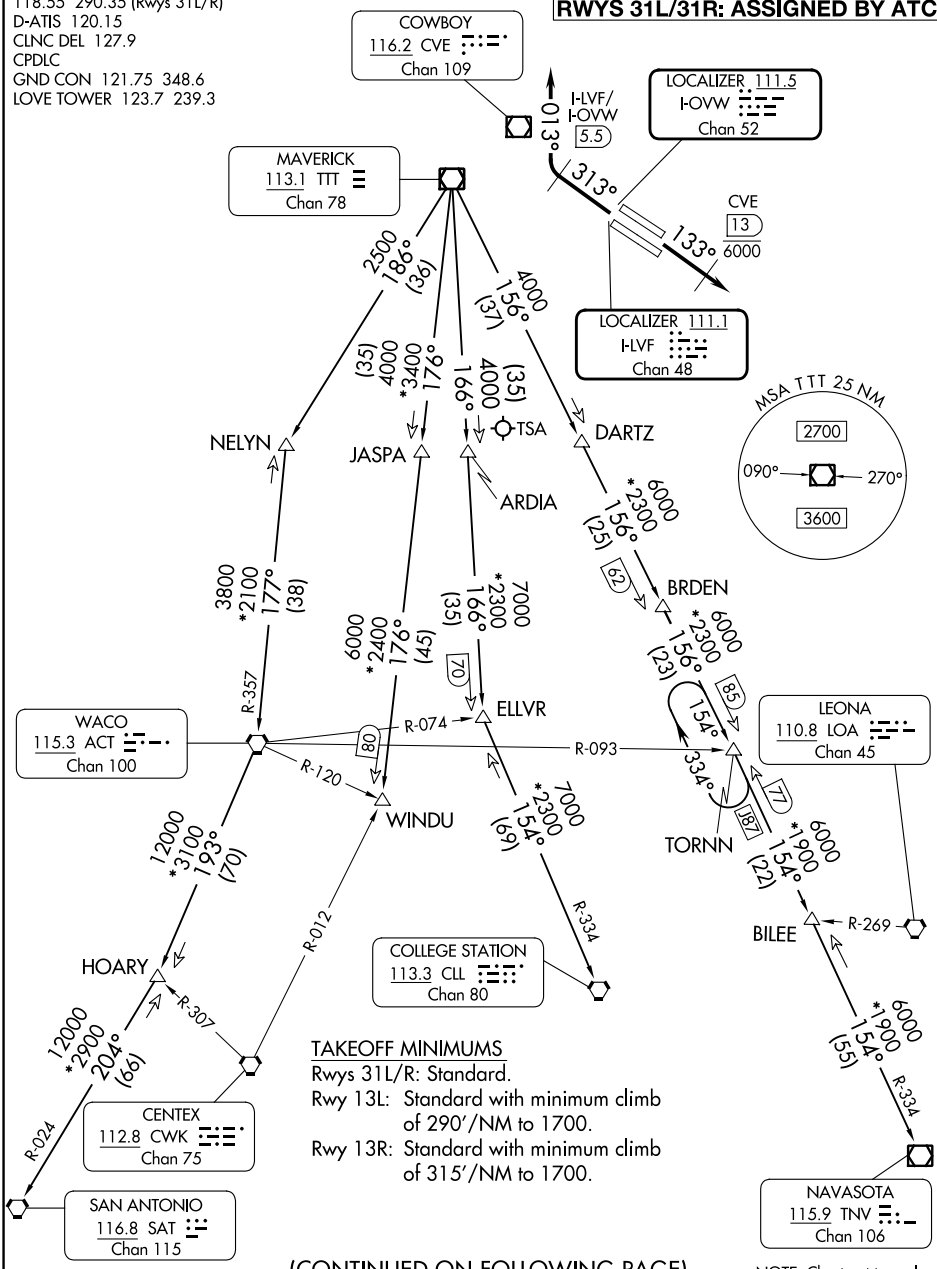
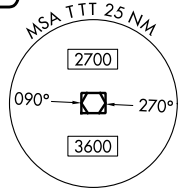
TOP ALTITUDE:
RWYS 13L/13R: 8000
RWYS 31L/31R: ASSIGNED BY ATC

COWBOY
 116.2 CVE : : : :
 Chan 109

LOCALIZER 111.5
 I-OVW : : : : :
 Chan 52

MAVERICK
 113.1 TTT : : :
 Chan 78

LOCALIZER 111.1
 H-LVF : : : : :
 Chan 48



TAKEOFF MINIMUMS
 Rwys 31L/R: Standard.
 Rwy 13L: Standard with minimum climb of 290'/NM to 1700.
 Rwy 13R: Standard with minimum climb of 315'/NM to 1700.

(CONTINUED ON FOLLOWING PAGE)

NOTE: Chart not to scale.

SC-2, 31 OCT 2024 to 28 NOV 2024

SC-2, 31 OCT 2024 to 28 NOV 2024

JOE POOL SEVEN DEPARTURE