

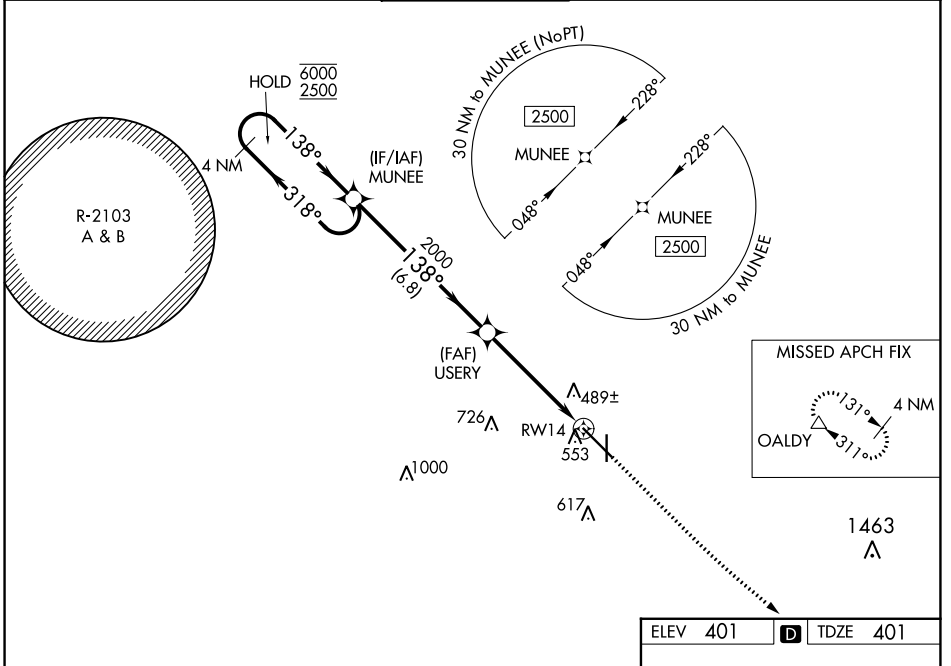
WAAS CH 86504 W14A	APP CRS 138°	Rwy ldg 8496 TDZE 401 Apt Elev 401
--	------------------------	---

RNAV (GPS) RWY 14

DOTHAN RGNL (DHN)

RNP APCH - GPS.		MISSED APPROACH: Climb to 900 then climbing left turn to 3000 direct OALDY and hold.		
<p>▼ For uncompensated Baro-VNAV systems, LNAV/VNAV NA below -3°C or above 54°C. Intense student helicopter pilot training in vicinity of airport.</p>				

ATIS 135.725	CAIRNS APP CON * 125.4 327.125	DOTHAN TOWER * 118.4 (CTAF) 0 257.6	GND CON 121.7 348.6	UNICOM 122.95
------------------------	--	---	-------------------------------	-------------------------



SE-4, 31 OCT 2024 to 28 NOV 2024

SE-4, 31 OCT 2024 to 28 NOV 2024

4 NM Holding Pattern		VGSIs and RNAV glidepath not coincident (VGSi Angle 3.00/TCH 40).		900	3000	OALDY
MUNEE		USERY		↑	↷	△
6000 ← 318°	2500 → 138°	2000		1.2 NM to RWY 14		
GP 3.00° TCH 54	2000		RWY 14			
6.8 NM		3.7 NM		1.2 NM		
CATEGORY	A	B	C	D		
LPV DA	601-3/4		200 (200-3/4)			
LNAV/VNAV DA	724-1		323 (400-1)			
LNAV MDA	820-1	419 (500-1)	820-1 1/8	419 (500-1 1/8)		
CIRCLING	860-1	459 (500-1)	920-1 1/2	1040-2	639 (700-2)	

