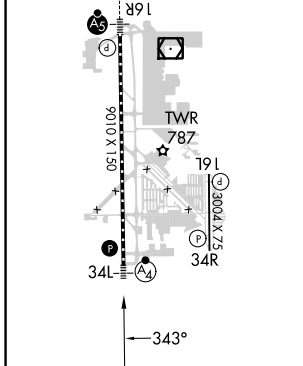
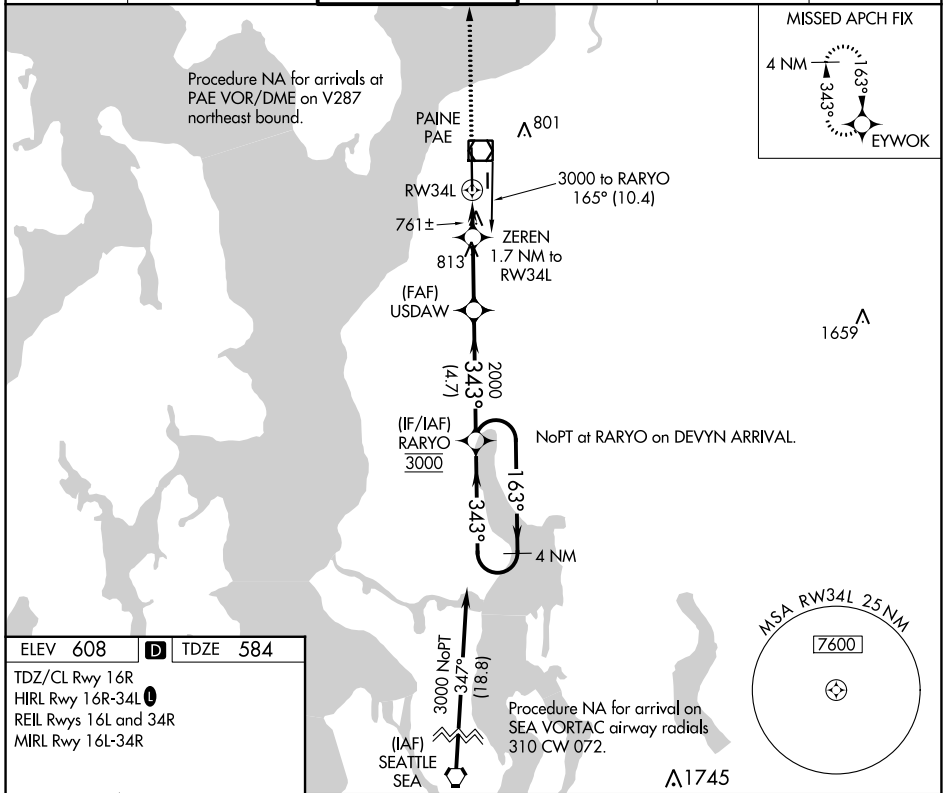


APP CRS	Rwy Idg	9010
343°	TDZE	584
	Apt Elev	608

RNAV (GPS) RWY 34L

SEATTLE PAINE FLD INTL (P.A.E)

<p>▼ Circling Rwy 34R NA at night. Rwy 34L helicopter visibility reduction below 3/4 SM NA. DME/DME RNP-0.3 NA.</p>		<p>MALSF</p>	<p>MISSED APPROACH: Climb to 3000 direct EYWOK and hold.</p>		
ATIS	SEATTLE APP CON	PAINE TOWER *	GND CON	CLNC DEL	UNICOM
128.65	128.5 306.9	132.95 (CTAF) 0 256.7	121.8 339.8	127.175	122.95



ELEV 608	D	TDZE 584
<p>TDZ/CL Rwy 16R HIRL Rwy 16R-34L REIL Rwy 16L and 34R MIRL Rwy 16L-34R</p>		
3000 EYWOK	<p>VGSI and descent angles not coincident (VGSI Angle 3.00/TCH 75).</p>	
<p>RARYO 4 NM Holding Pattern</p>		
<p>ZEREN 1.7 NM to RW34L</p>		
<p>USDAW</p>		
<p>RW34L 1.2 NM to RW34L</p>		
<p>1160</p>		
<p>163° → 3000</p>		
<p>← 343° 3000</p>		
<p>1.2 NM 0.5 NM 2.6 NM 4.7 NM</p>		
CATEGORY	A	B
LNAV MDA	1020-3/4 436 (500-3/4)	1020-1 436 (500-1)
C CIRCLING	1100-1 492 (500-1)	1120-1 1/2 512 (600-1 1/2)
		1160-2 552 (600-2)

NW-1, 31 OCT 2024 to 28 NOV 2024

NW-1, 31 OCT 2024 to 28 NOV 2024