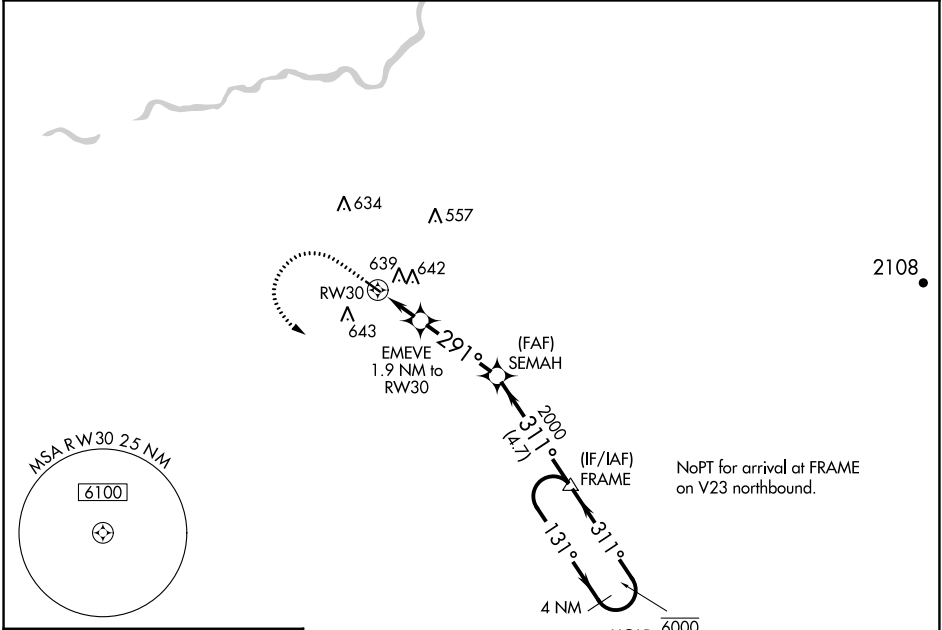


APP CRS 291°	Rwy Idg 3089
	TDZE 280
	Apt Elev 280

RNAV (GPS) RWY 30

FRESNO CHANDLER EXEC (FCH)

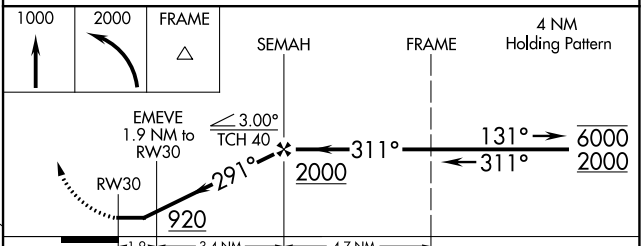
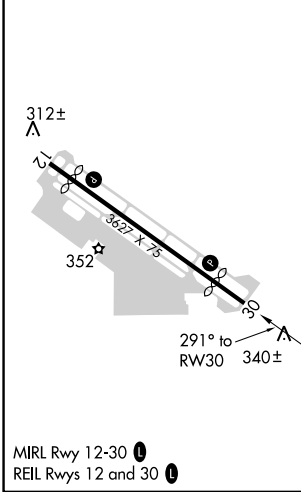
RNP APCH. Straight-in Rwy 30 NA at night, Circling Rwy 30 NA at night. Rwy 30 helicopter visibility reduction below 1 SM NA.		MISSED APPROACH: Climb to 1000 then climbing left turn to 2000 direct FRAME and hold.	
AWOS-3 135.225	FRESNO APP CON 119.0 323.25	CLNC DEL 119.0	UNICOM 123.0 (CTAF) 0



SW-2, 31 OCT 2024 to 28 NOV 2024

SW-2, 31 OCT 2024 to 28 NOV 2024

ELEV 280	TDZE 280
----------	----------



CATEGORY	A	B	C	D
LNNAV MDA	800-1	520 (600-1)	800-1 3/8 520 (600-1 3/8)	NA
CIRCLING	960-1	680 (700-1)	960-2 680 (700-2)	NA