


WAAS CH <b>65710</b> <b>W35A</b>	APP CRS <b>352°</b>	Rwy Idg <b>7852</b> TDZE <b>1883</b> Apt Elev <b>1887</b>
--	------------------------	---

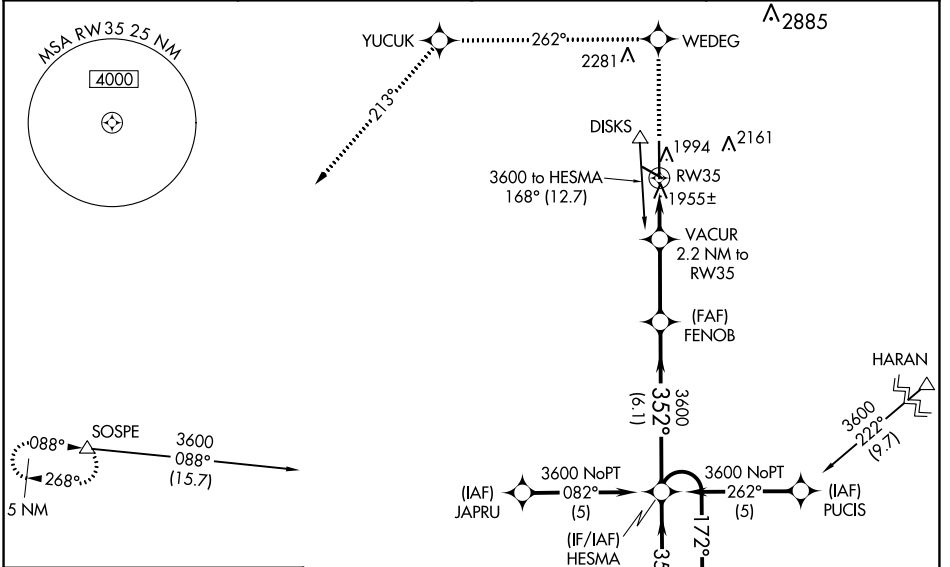
# RNAV (GPS) RWY 35

GREAT BEND MUNI (G.B.D)

**⚠** For uncompensated Baro-VNAV systems, LNAV/VNAV NA below -18°C (0°F) or above 54°C (130°F). DME/DME RNP-0.3 NA. When local altimeter setting not received, use Russell Muni altimeter setting: increase LPV DA to 2248 feet and all visibilities ¼ SM; increase LNAV/VNAV DA to 2299 feet and all visibilities ¼ SM; increase all MDAs 80 feet and visibility Cats C and D ¼ SM. For inop MALSRL increase LPV all Cats visibility to 1 mile. For inop MALSRL when using Russell Muni altimeter setting increase LPV all Cats and LNAV Cat D visibility to 1¼ mile. Baro-VNAV and VDP NA when using Russell Muni altimeter setting. Inop table does not apply to LNAV Cat D.

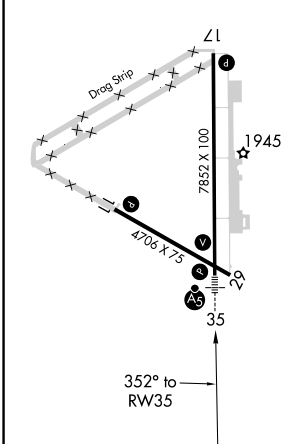
**MALSRL**  
  
**MISSED APPROACH:** Climb to 4500 direct WEDEG and via 262° track to YUCUK then via 213° track to SOSPE and hold.





AWOS-3PT <b>119.275</b>	KANSAS CITY CENTER <b>118.8 322.425</b>	UNICOM <b>122.8 (CTAF) 0</b>
----------------------------	--	---------------------------------



ELEV 1887	<b>D</b>	TDZE 1883
-----------	----------	-----------

MIRL Rwy 11-29 and 17-35  
 REIL Rwy 17



4500		WEDEG	262° tr		YUCUK	213° tr		SOSPE						
*LNAV only														
VACUR 2.2 NM to RW35 *0.9 NM to RW35 FENOB HESMA 4 NM Holding Pattern GP 3.00° TCH 49														
<table border="1"> <tr> <td>0.9</td> <td>1.3 NM</td> <td>3 NM</td> <td>6.1 NM</td> <td></td> </tr> </table>										0.9	1.3 NM	3 NM	6.1 NM	
0.9	1.3 NM	3 NM	6.1 NM											
CATEGORY	A		B		C		D							
LPV DA	2171-½		288 (300-½)											
LNAV/VNAV DA	2222-¾		339 (400-¾)											
LNAV MDA	2220-½		337 (400-½)		2220-1		337 (400-1)							
CIRCLING	2320-1		2340-1		2520-1¾		2640-2½							
	433 (500-1)		453 (500-1)		633 (700-1¾)		753 (800-2½)							

NC-2, 31 OCT 2024 to 28 NOV 2024

NC-2, 31 OCT 2024 to 28 NOV 2024