

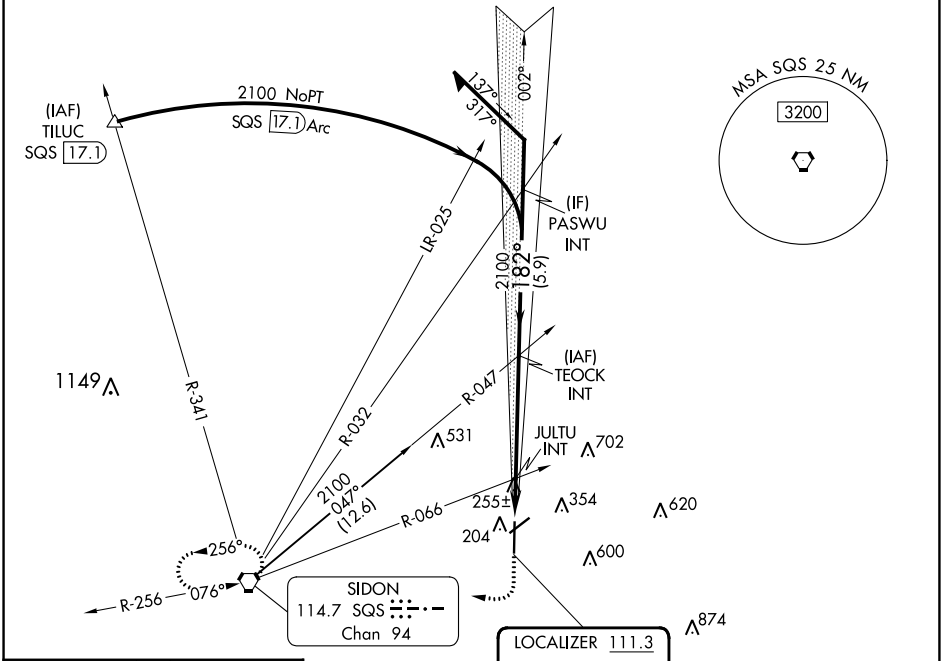
LOC I-GWO 111.3	APP CRS 182°	Rwy ldg TDZE Apt Elev	6501 145 162
---------------------------	------------------------	-----------------------------	---

ILS or LOC RWY 18

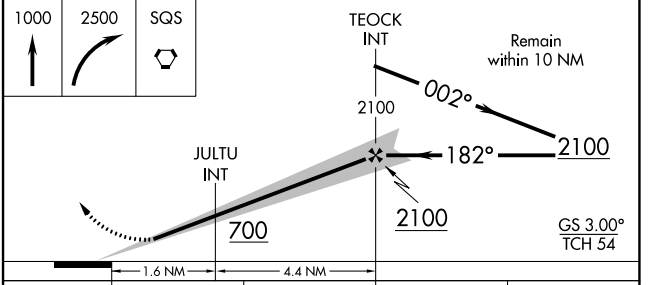
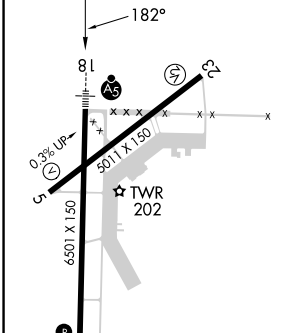
GREENWOOD-LEFLORE (GWO)

⚠ Rwy 18 helicopter visibility reduction below 3/4 SM NA. Circling Rwy 5, 23 NA at night. For inop ALS, increase S-ILS 18 all Cats 2/3 SM, and S-LOC 18 Cat A/B visibility to 1 SM.	MALSR 	MISSED APPROACH: Climb to 1000 then climbing right turn to 2500 direct SQS VORTAC and hold.
--	-----------	---

ASOS 119.975	MEMPHIS CENTER 132.5 259.1	GREENWOOD TOWER * 118.35 (CTAF) 0 367.6	GND CON 125.55 373.4	CLNC DEL 125.55	UNICOM 122.95
------------------------	--------------------------------------	---	--------------------------------	---------------------------	-------------------------



ELEV 162	TDZE 145
-----------------	-----------------



		FAF to MAP 6 NM					
		Knots	60	90	120	150	180
		Min:Sec	6:00	4:00	3:00	2:24	2:00
CATEGORY		A	B	C	D		
S-ILS 18		464-3/4		319 (400-3/4)			
S-LOC 18		520-3/4		375 (400-3/4)			
C CIRCLING		720-1 558 (600-1)	760-1 598 (600-1)	940-2 3/4 778 (800-2 3/4)	1020-3 858 (900-3)		

SC-4, 31 OCT 2024 to 28 NOV 2024

SC-4, 31 OCT 2024 to 28 NOV 2024