


LOC/DME I-APC <b>111.3</b> Chan 50	APP CRS <b>006°</b>	Rwy Idg TDZE Apt Elev	<b>5930</b> <b>17</b> <b>36</b>
--	------------------------	-----------------------------	---------------------------------------

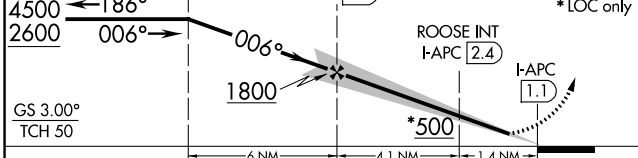
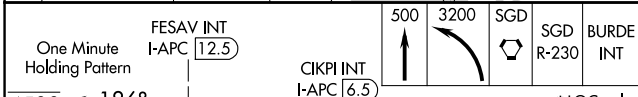
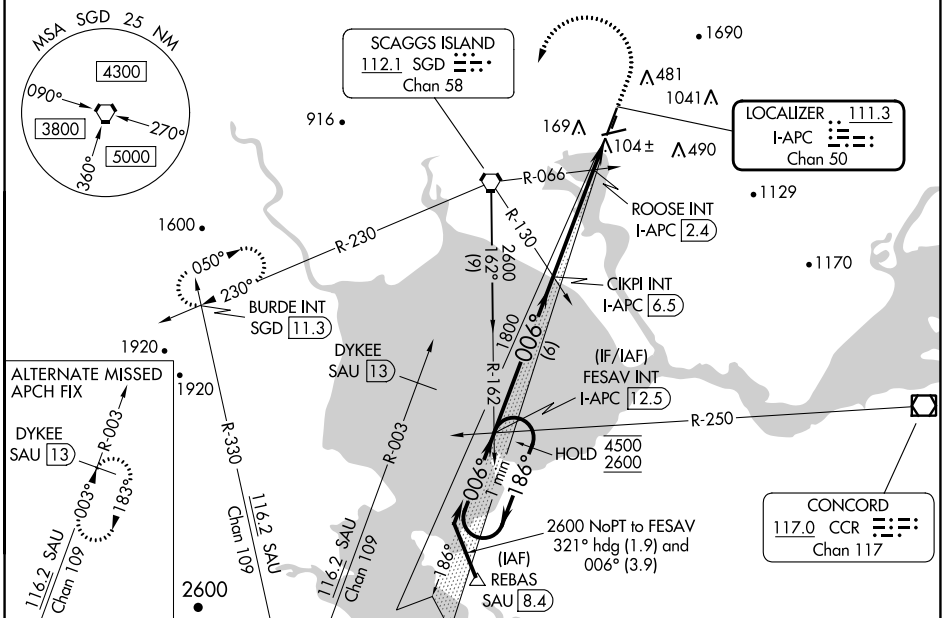
# ILS or LOC Z RWY 1L

NAPA COUNTY (APC)

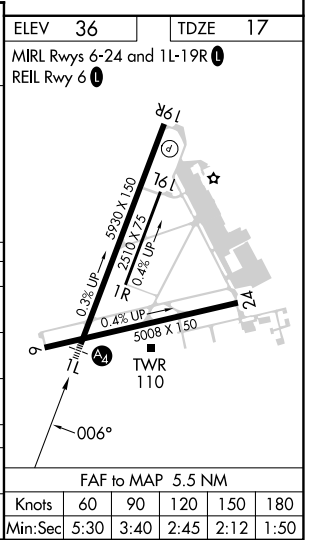
**⚠** Autopilot coupled approach NA below 530. Inop table does not apply to S-ILS 1L. Circling Cats A/B/C NA northeast of Rwy 19R and 24. Circling Cat D NA east of Rwy 19L-1R. Circling Rwy 6 NA at night.

**MALS**  MISSED APPROACH: Climb to 500 then climbing left turn to 3200 direct SGD VORTAC and on SGD VORTAC R-230 to BURDE INT/SGD 11.3 DME and hold, continue climb-in-hold to 3200.

ATIS <b>124.05</b>	OAKLAND CENTER <b>127.8 353.5</b>	NAPA TOWER ★ <b>118.7 (CTAF) 257.8</b>	GND CON <b>121.7</b>	CLNC DEL <b>127.85</b>	UNICOM <b>122.95</b>
-----------------------	--------------------------------------	---	-------------------------	---------------------------	-------------------------



CATEGORY	A	B	C	D
S-ILS 1L		217-¾	200 (200-¾)	
S-LOC 1L	500-¾	483 (500-¾)	500-1½	483 (500-1½)
<b>C</b> CIRCLING	600-1 564 (600-1)	680-1 644 (700-1)	1280-3 1244 (1300-3)	1300-3 1264 (1300-3)
ROOSE FIX MINIMUMS (DUAL VOR RECEIVERS OR DME REQUIRED)				
S-LOC 1L		360-¾	343 (400-¾)	
<b>C</b> CIRCLING	600-1 564 (600-1)	680-1 644 (700-1)	1280-3 1244 (1300-3)	1300-3 1264 (1300-3)



SW-2, 31 OCT 2024 to 28 NOV 2024

SW-2, 31 OCT 2024 to 28 NOV 2024