

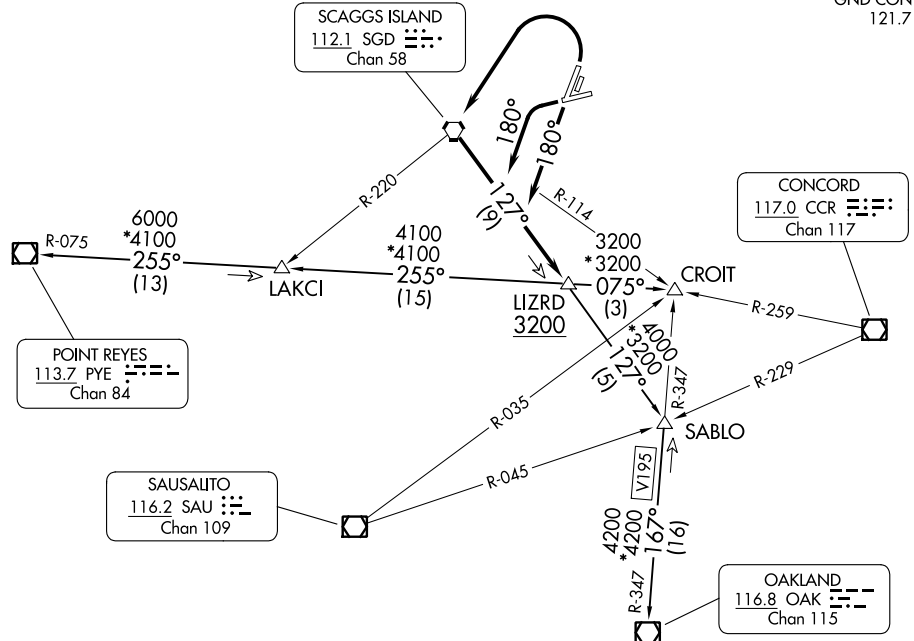
LIZRD FIVE DEPARTURE

AL-281 (FAA)

NAPA COUNTY (APC)
NAPA, CALIFORNIA

**TOP ALTITUDE:
ASSIGNED BY ATC**

OAKLAND CENTER
127.8 353.5
ATIS
124.05
CLNC DEL
127.85
GND CON
121.7



TAKEOFF MINIMUMS

- Rwy 6: NA-Obstacles.
- Rwys 19L/R: Standard
- Rwys 1L/R: Standard with minimum climb of 370' per NM to 1200'.
- Rwy 24: Standard with minimum climb of 255' per NM to 3000'.

NOTE: Chart not to scale.

DEPARTURE ROUTE DESCRIPTION

- TAKEOFF RUNWAYS 1L/R: Climbing left turn direct SGD VORTAC, proceed outbound on the SGD R-127 to LIZRD INT. Cross LIZRD INT at or above 3200. Thence. . .
 - TAKEOFF RUNWAYS 19L/R: Climb on heading 180° to intercept and proceed outbound on the SGD R-127 to LIZRD INT. Cross LIZRD INT at or above 3200. Thence. . .
 - TAKEOFF RUNWAY 24: Climbing left turn on heading 180° to intercept and proceed outbound on the SGD R-127 to LIZRD INT. Cross LIZRD INT at or above 3200. Thence. . .
- . . . on (transition) or (assigned route). Maintain ATC assigned altitude.

- CROIT TRANSITION (LIZRD5.CROIT): From over LIZRD on PYE R-075 to CROIT.
- OAKLAND TRANSITION (LIZRD5.OAK): From over LIZRD on SGD R-127 and OAK R-347 to OAK VOR/DME.
- POINT REYES TRANSITION (LIZRD5.PYE): From over LIZRD on PYE R-075 to PYE VOR/DME.

LIZRD FIVE DEPARTURE

SW-2, 31 OCT 2024 to 28 NOV 2024

SW-2, 31 OCT 2024 to 28 NOV 2024