

(BRIXX.REBAS1) 24305

AL-281 (FAA)

REBAS ONE ARRIVAL (RNAV) Arrival Routes

NAPA, CALIFORNIA

HEALDSBURG
MUNI

RNAV 1 - DME/DME/IRU or GPS.

RADAR required.

CHARLES M SCHULZ/
SONOMA COUNTY

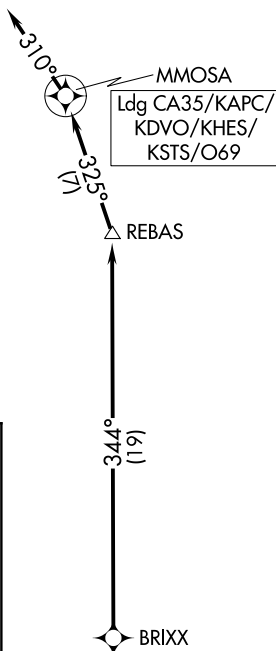
PETALUMA MUNI

GNOSS FLD

SAN RAFAEL
(Pvt)

NAPA COUNTY

OAKLAND CENTER
127.8 353.5
APC ATIS
124.05
STS ATIS
120.55
APC GND CON
121.7
STS GND CON
121.9
NAPA TOWER ★
118.7 257.8
SANTA ROSA TOWER ★
118.5 363.0



NOTE: Do not file - to be assigned by ATC.

NOTE: Chart not to scale.

ARRIVAL ROUTE DESCRIPTION

LANDING ALL AIRPORTS: From BRIXX on track 344° to REBAS, then on track 325° to MMOSA, then on track 310°. Expect RADAR vectors to final approach course.

REBAS ONE ARRIVAL (RNAV) Arrival Routes

NAPA, CALIFORNIA

(BRIXX.REBAS1) 11JUL24

SW-2, 31 OCT 2024 to 28 NOV 2024

SW-2, 31 OCT 2024 to 28 NOV 2024