


LOC/DME I-ORF 109.1 Chan 28	APP CRS 047°	Rwy ldg TDZE 26 Apt Elev 27	7809
--	------------------------	---	-------------

ILS or LOC RWY 5

NORFOLK INTL (ORF)

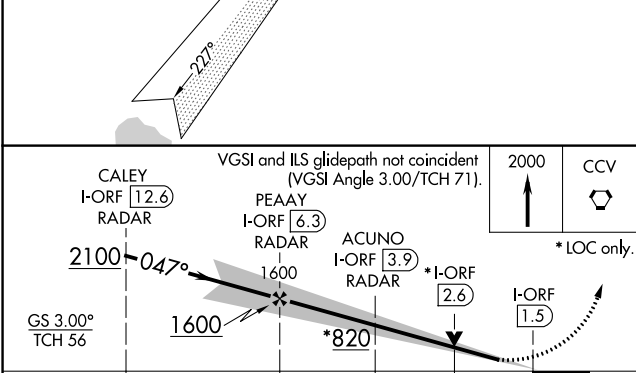
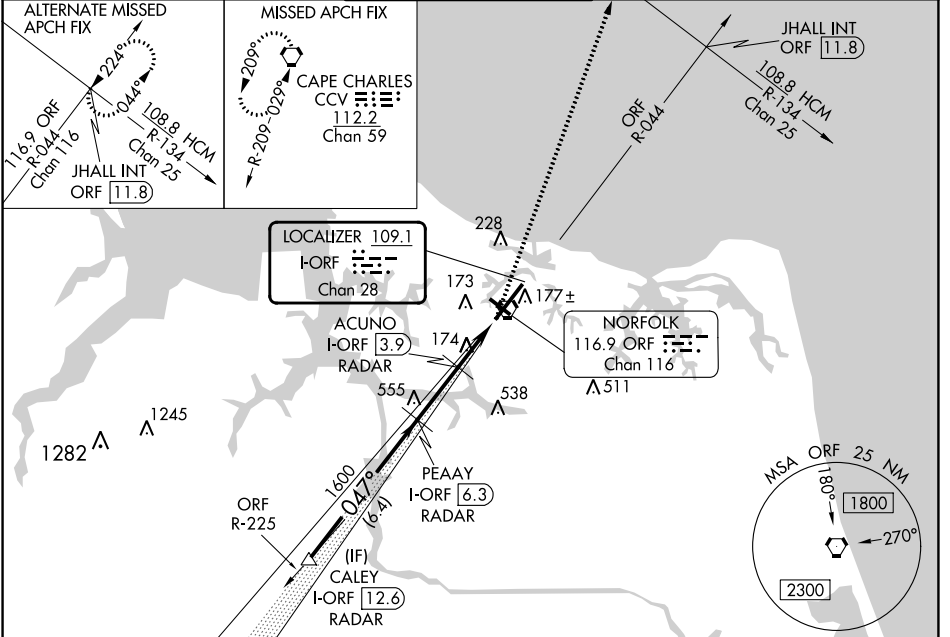
DME or RADAR required. RADAR required for procedure entry.

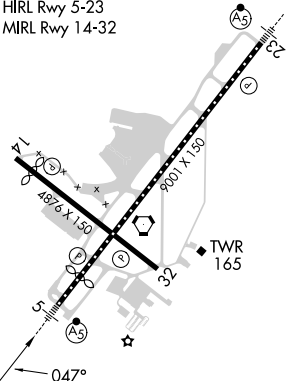
Autopilot coupled approach NA below 1180. For inop ALS, increase S-LOC 5 Cat C and D visibility to RVR 6000. ** RVR 1800 authorized with use of FD or AP or HUD to DA.

MALSR 

MISSED APPROACH: Climb to 2000 direct CCV VORTAC and hold.

ATIS 127.15	NORFOLK APP CON 118.9 353.7	NORFOLK TOWER 120.8 257.8	GND CON 121.9	CLNC DEL 118.5
-----------------------	---------------------------------------	-------------------------------------	-------------------------	--------------------------



ELEV 27	TDZE 26
REIL Rwy 14 and 32	HIRL Rwy 5-23
MIRL Rwy 14-32	
	
FAF to MAP 4.8 NM	
Knots	60 90 120 150 180
Min:Sec	4:48 3:12 2:24 1:55 1:36

CATEGORY	A	B	C	D
S-ILS 5**	226/24 200 (200-½)			
S-LOC 5	440/24 414 (500-½)	440/40 414 (500-¾)		
CIRCLING	480-1 453 (500-1)	540-1 513 (600-1)	540-1½ 513 (600-1½)	900-2¾ 873 (900-2¾)

NE-3, 31 OCT 2024 to 28 NOV 2024

NE-3, 31 OCT 2024 to 28 NOV 2024