

WAAS CH 81807 W36A	APP CRS 356°	Rwy Idg 7339 TDZE 1066 Apt Elev 1087
--	------------------------	---

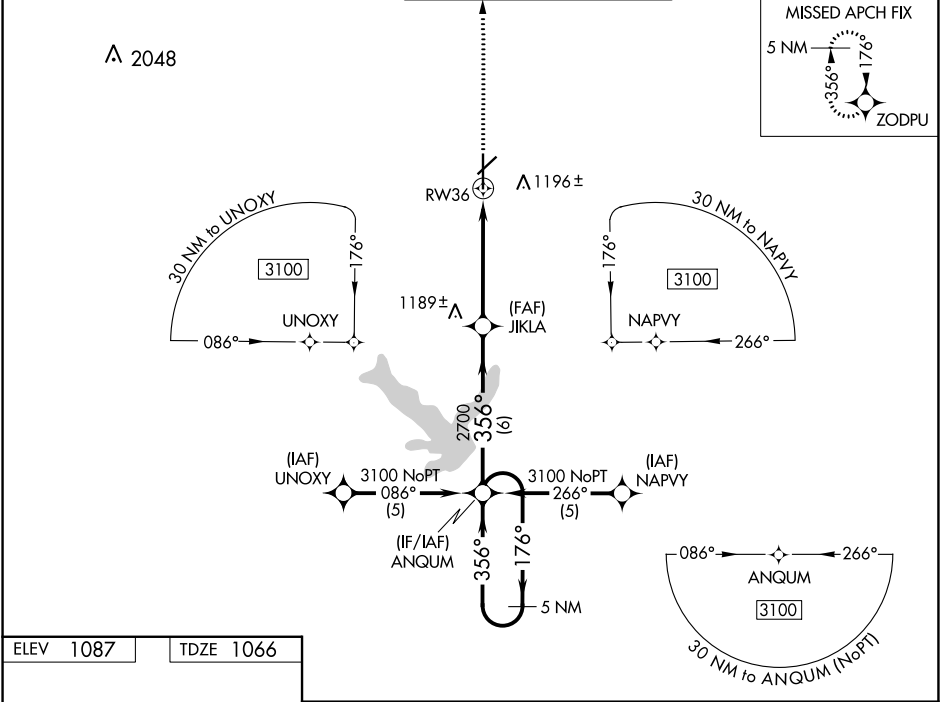
RNAV (GPS) RWY 36

NEW CENTURY AIRCENTER (IXD)

⚠ DME/DME RNP-0.3 NA. For inop MALS, increase LNAV Cat D visibility to 1 1/4 and LPV visibility to 1 all Cats. If local altimeter setting not received, use Johnson County Exec altimeter setting and increase all DA/MDAs 20 feet. VDP NA with Johnson County Exec altimeter setting.

MALS
 MISSED APPROACH: Climb to 3100 direct ZODPU and hold.

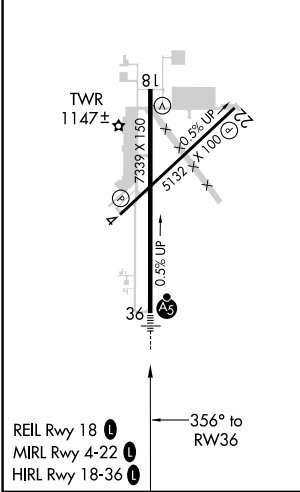
ASOS 135.325	KANSAS CITY APP CON 118.9 251.075	NEW CENTURY TOWER * 133.0 (CTAF) 0	GND CON 124.3	UNICOM 122.95
------------------------	---	--	-------------------------	-------------------------



NC-2, 31 OCT 2024 to 28 NOV 2024

NC-2, 31 OCT 2024 to 28 NOV 2024

ELEV 1087	TDZE 1066
------------------	------------------



REIL Rwy 18 **1**
MIRL Rwy 4-22 **1**
HIRL Rwy 18-36 **1**

5 NM Holding Pattern		ANQUM		3100		ZODPU	
3100 ← 176°		→ 356°		356°		*INAV only.	
GP 3.00°		TCH 50		2700		*1.1 NM to RWY 36	
		6 NM		3.9 NM		1.1 NM	
CATEGORY	A	B	C	D			
LPV DA	1316-1/2			250 (300-1/2)			
LNAV/VNAV DA	NA						
LNAV MDA	1440-1/2		374 (400-1/2)		1440-1		
					374 (400-1)		
C CIRCLING	1560-1		473 (500-1)		1580-1/2		1640-2
					493 (500-1/2)		553 (600-2)