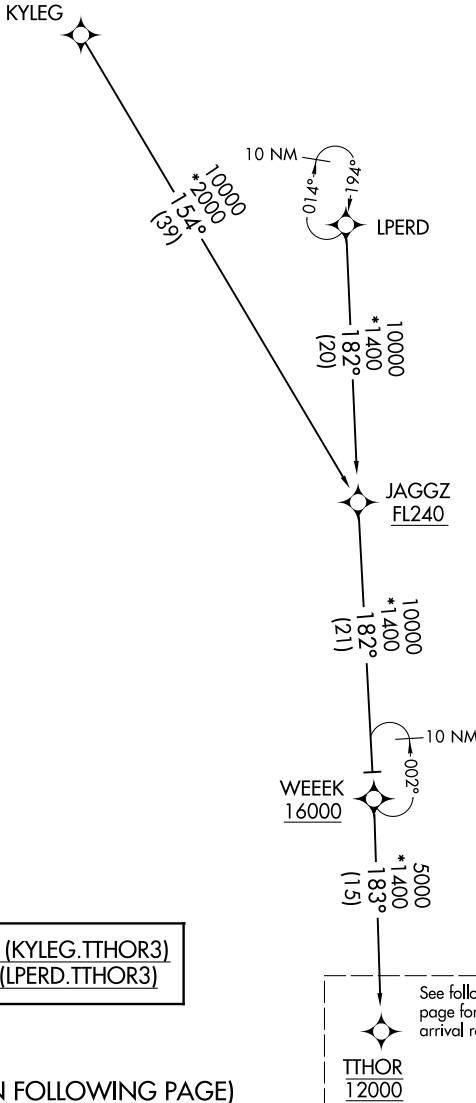


ORLANDO APP CON
 119.775 351.9
 DAYTONA APP CON
 118.85 353.825
 DAB ATIS
 132.875
 EVB ATIS
 124.625
 LEE ATIS
 134.325
 ORL ATIS
 127.25
 OMN ATIS
 118.475
 SFB ATIS
 125.975

RNAV 1 - DME/DME/IRU or GPS.
 RADAR required.

NOTE: Jet and turboprop aircraft only.



KYLEG TRANSITION (KYLEG.TTHOR3)
 LPERD TRANSITION (LPERD.TTHOR3)

(CONTINUED ON FOLLOWING PAGE)

See following page for arrival routes.
 TTHOR 12000

NOTE: Chart not to scale.

SE-3, 31 OCT 2024 to 28 NOV 2024

SE-3, 31 OCT 2024 to 28 NOV 2024