

# ARLIN FOUR ARRIVAL

AL-322 (FAA)

PHOENIX, ARIZONA

SW-4, 31 OCT 2024 to 28 NOV 2024

## ARRIVAL ROUTE DESCRIPTION

**BLYTE TRANSITION (BLH.ARLIN4):** From over BLH VORTAC on BLH R-089 and IWA R-256 to ARLIN INT. Thence. . . .

**MOHAK TRANSITION (MOHAK.ARLIN4):** From over MOHAK INT on GBN R-247 and BXK R-215 to HYDRR INT, then on IWA R-256 to ARLIN INT. Thence. . . .

**PHOENIX SKY HARBOR INTL:** Rwy 7L/R or 8: From over ARLIN, Expect vectors to final approach course; Rwy 25L/R or 26: From over ARLIN, on IWA R-256 to TUKEE. Expect vectors to final approach course prior to TUKEE.

**SATELLITE AIRPORTS:** Expect vectors after passing SCOLE or JUDTH.

**LOST COMMUNICATIONS:** After ARLIN, on IWA R-256 and PXR R-143 to PXR VORTAC.

**NOTE:** BLYTHE Transition for turbojet aircraft FL240 and above.  
Turboprop aircraft plan BLYTHE ARRIVAL at or below FL230.

**NOTE:** MOHAK Transition for turbojet and turboprop aircraft.

**NOTE:** Turboprops landing KPHX expect vectors after passing SCOLE or JUDTH.

## SCOLE

### VERTICAL NAVIGATION PLANNING INFORMATION

FL180 089° (35) → 11000 089° (48) Expect FL250 → 10000 076° (75) (4) → 10000 076° (111) (8) → 10000 256° (60) (8) → ARLIN

**BLYTHE**  
117.4 BLH  
Chan 121

**BUCKEYE**  
110.6 BKK  
Chan 43

**PHOENIX**  
115.6 PXR  
Chan 103

## MOHAK

### VERTICAL NAVIGATION PLANNING INFORMATION

116.8 BZA R-075 → 10000 067° (66) (15) → JUDTH

116.8 BZA R-075 → 10000 067° (66) (15) → GBN R-247 → 10000 076° (52) → JUDTH

### VERTICAL NAVIGATION PLANNING INFORMATION

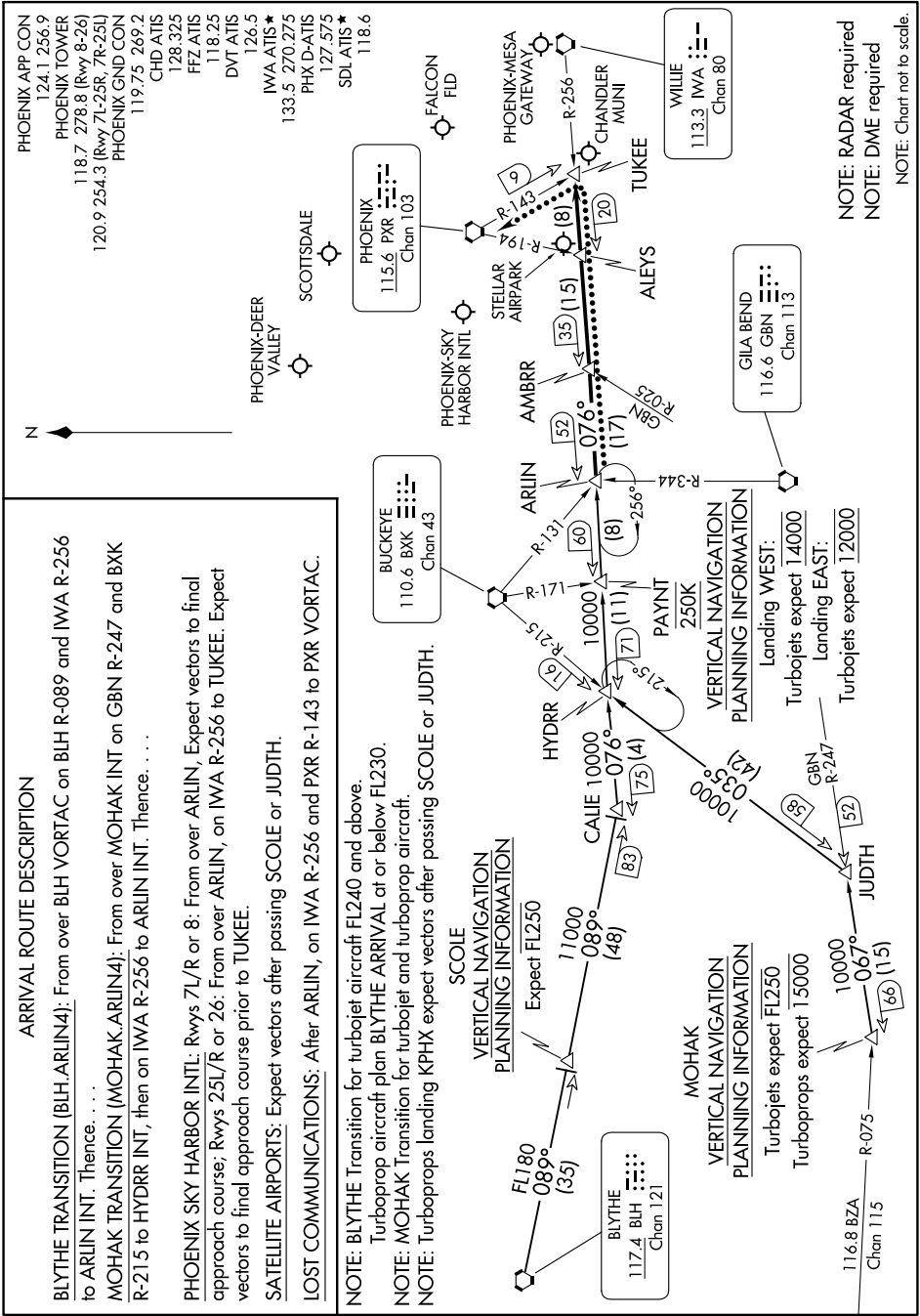
**Landing WEST:**  
Turbojets expect 14000  
Turbojets expect 12000

**Landing EAST:**  
Turbojets expect 14000  
Turbojets expect 12000

**GILA BEND**  
116.6 GBN  
Chan 113

**WILIE**  
113.3 IWA  
Chan 80

- PHOENIX APP CON 124.1 256.9
- PHOENIX TOWER 118.7 278.8 (Rwy 8-26)
- PHOENIX GND CON 120.9 254.3 (Rwy 7L-23R, 7R-25L)
- CHD ATIS 119.75 269.2
- 128.325
- FFZ ATIS 118.25
- DVT ATIS 126.5
- IWA ATIS 133.5 270.275
- PHX D-ATIS 127.575
- SDL ATIS 118.6
- PHOENIX-DEER VALLEY
- SCOTTSDALE



**NOTE:** RADAR required  
**NOTE:** DME required  
**NOTE:** Chart not to scale.

# ARLIN FOUR ARRIVAL

PHOENIX, ARIZONA

SW-4, 31 OCT 2024 to 28 NOV 2024