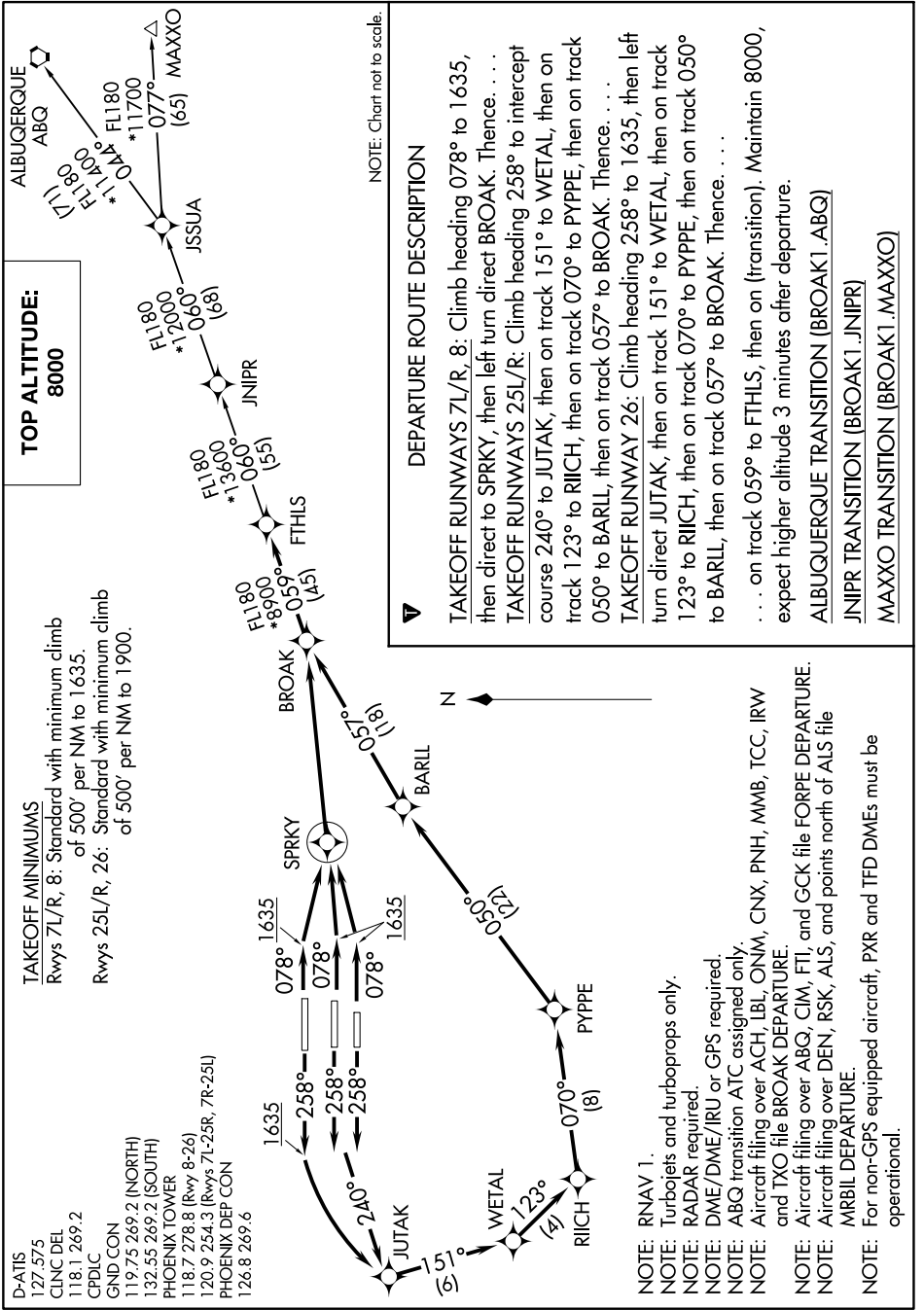


SW-4, 31 OCT 2024 to 28 NOV 2024



TAKEOFF MINIMUMS
 Rwy 7L/R, 8: Standard with minimum climb of 500' per NM to 1635.
 Rwy 25L/R, 26: Standard with minimum climb of 500' per NM to 1900.

D-ATIS 127.575
 CLNC DEL 118.1269.2
 CPDLC
 GND CON 119.75269.2 (NORTH)
 132.55269.2 (SOUTH)
 PHOENIX TOWER 118.7278.8 (Rwy 8-26)
 120.9254.3 (Rwys 7L-25R, 7R-25L)
 PHOENIX DEP CON 126.8269.6

BROAK ONE DEPARTURE (RNAV)
 (BROAK1.BROAK) 24MAY18

DEPARTURE ROUTE DESCRIPTION

TAKEOFF RUNWAYS 7L/R, 8: Climb heading 078° to 1635, then direct to SPRKY, then left turn direct BROAK. Thence. . . .

TAKEOFF RUNWAYS 25L/R: Climb heading 258° to intercept course 240° to JUTAK, then on track 151° to WETAL, then on track 123° to RIICH, then on track 070° to PYPPE, then on track 050° to BARLL, then on track 057° to BROAK. Thence. . . .

TAKEOFF RUNWAY 26: Climb heading 258° to 1635, then left turn direct JUTAK, then on track 151° to WETAL, then on track 123° to RIICH, then on track 070° to PYPPE, then on track 050° to BARLL, then on track 057° to BROAK. Thence. . . .

. . . on track 059° to FTHLS, then on (transition). Maintain 8000, expect higher altitude 3 minutes after departure.

ALBUQUERQUE TRANSITION (BROAK1.ABQ)
 JNIPR TRANSITION (BROAK1.JNIPR)
 MAXXO TRANSITION (BROAK1.MAXXO)

NOTE: Chart not to scale.

NOTE: RNAV 1.
 NOTE: Turbojets and turboprops only.
 NOTE: RADAR required.
 NOTE: DME/DME/IRU or GPS required.
 NOTE: ABQ transition ATC assigned only.
 NOTE: Aircraft filing over ACH, LBL, ONM, CNX, PNH, MMB, TCC, IRW and TXO file BROAK DEPARTURE.
 NOTE: Aircraft filing over ABQ, CIM, FTI, and GCK file FORPE DEPARTURE.
 NOTE: Aircraft filing over DEN, RSK, ALS, and points north of ALS file MRBIL DEPARTURE.
 NOTE: For non-GPS equipped aircraft, PXR and TFD DMEs must be operational.

SW-4, 31 OCT 2024 to 28 NOV 2024