


LOC/DME I-AHA <b>110.75</b> Chan <b>44</b> (Y)	APP CRS <b>078°</b>	Rwy Idg <b>7800</b> TDZE <b>1116</b> Apt Elev <b>1135</b>
--	------------------------	---

# ILS or LOC RWY 7R

PHOENIX SKY HARBOR INTL (PHX)

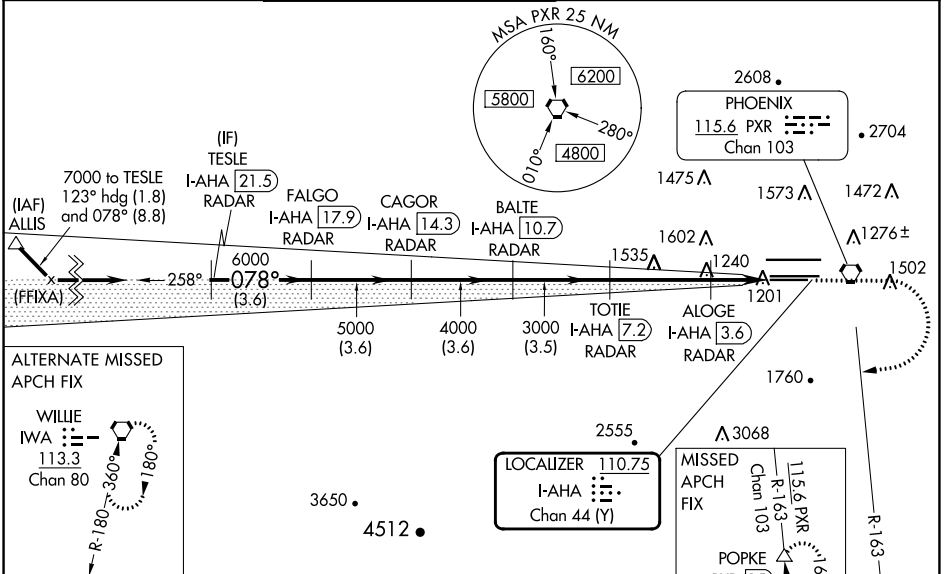
**DME required.**

**⚠** Inop table does not apply to S-ILS 7R. Simultaneous approach authorized with ILS or LOC Rwy 8 and RNAV (GPS) Y Rwy 8. Rwy 7R helicopter visibility reduction below 3/4 SM NA. LOC procedure NA during simultaneous operations. For inop ALS, increase S-LOC 7R visibility Cats A/B to 1 SM and Ops C/D to 1 1/2 SM.

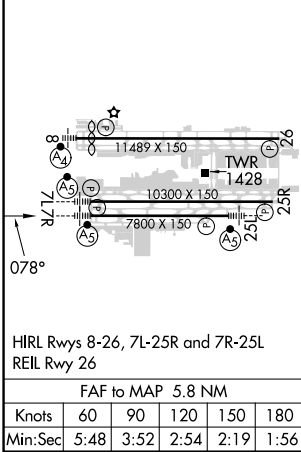
**MALSR** 

**MISSED APPROACH:** Climb to 3300 then climbing right turn to 5000 on heading 250° and PXR VORTAC R-163 to POPKE/PXR 15 DME and hold.

D-ATIS <b>127.575</b>	PHOENIX APP CON <b>128.65 353.9</b>	PHOENIX TOWER <b>118.7 278.8</b> (Rwy 8-26) <b>120.9 254.3</b> (Rwy 7L-25R, 7R-25L)	GND CON <b>119.75 269.2</b> (N) <b>132.55 269.2</b> (S)	CLNC DEL <b>118.1 269.2</b>	CPDLC
--------------------------	--	---	---	--------------------------------	-------



ELEV 1135	<b>D</b>	TDZE 1116
-----------	----------	-----------



VGSI and ILS glidepath not coincident (VGSI Angle 3.00/TCH 70).

TESLE I-AHA [21.5] RADAR	FALGO I-AHA [17.9] RADAR	CAGOR I-AHA [14.3] RADAR	BALTE I-AHA [10.7] RADAR	TOTIE I-AHA [7.2] RADAR	ALOE I-AHA [3.6] RADAR	POPKE PXR R-163 Δ
--------------------------	--------------------------	--------------------------	--------------------------	-------------------------	------------------------	-------------------

Use I-AHA DME when on the localizer course.

**7000** 078°  
**6000** 6000  
**5000** 5000  
**4000** 4000  
**3000** 3000  
**\*1840**

GS 3.00°  
TCH 57

CATEGORY	A	B	C	D
S-ILS 7R		1369-3/4	253 (300-3/4)	
S-LOC 7R		1520-3/4	404 (400-3/4)	
<b>C</b> CIRCLING	1740-1	605 (700-1)	2040-2 3/4 905 (1000-2 3/4)	2560-3 1425 (1500-3)

SW-4, 31 OCT 2024 to 28 NOV 2024

SW-4, 31 OCT 2024 to 28 NOV 2024