

WAAS CH <b>40022</b> <b>W25A</b>	APP CRS <b>258°</b>	Rwy Idg <b>10300</b> TDZE <b>1134</b> Apt Elev <b>1135</b>
--	------------------------	--

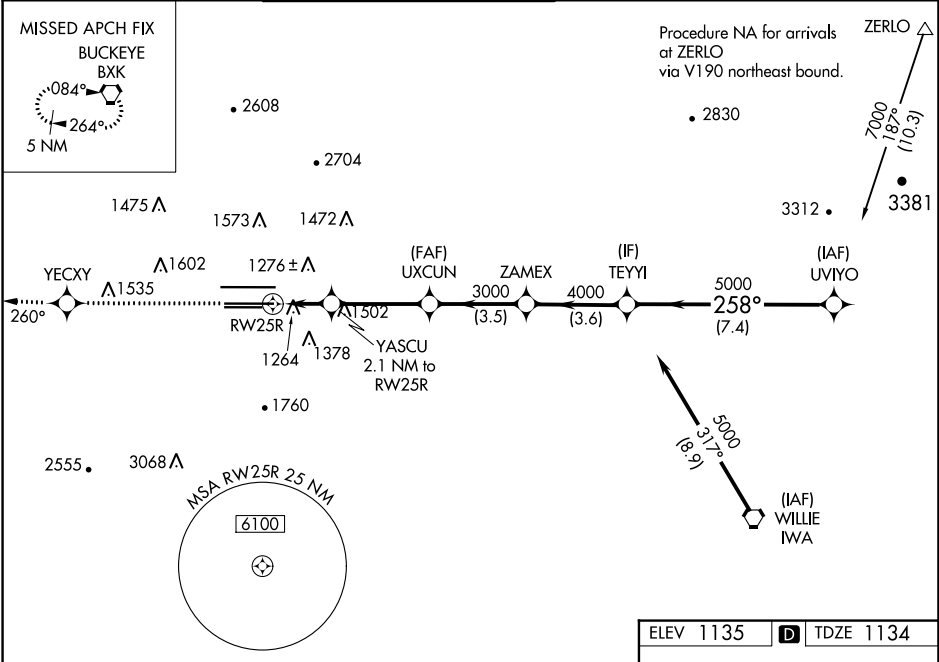
# RNAV (GPS) Y RWY 25R

PHOENIX SKY HARBOR INTL (PHX)

**⚠** For uncompensated Baro-VNAV systems, LNAV/VNAV NA below -17°C (2°F) or above 46°C (114°F). DME/DME RNP-0.3 NA. Simultaneous approach authorized with ILS or LOC Rwy 26. Use of FD or AP providing RNAV track guidance required during simultaneous operations. LNAV procedure NA during simultaneous operations.

**⚠** MISSED APPROACH: Climb to 5000 direct YECCY and via 260° track to BXX VORTAC and hold.

D-ATIS <b>127.575</b>	PHOENIX APP CON <b>128.65 353.9</b>	PHOENIX TOWER <b>118.7 278.8</b> (Rwy 8-26) <b>120.9 254.3</b> (Rwy 7L-25R, 7R-25L)	GND CON <b>119.75 269.2</b> (N) <b>132.55 269.2</b> (S)	CLNC DEL <b>118.1 269.2</b>	CPDLC
--------------------------	--	---	---	--------------------------------	-------



SW-4, 31 OCT 2024 to 28 NOV 2024

SW-4, 31 OCT 2024 to 28 NOV 2024

5000	YECCY	fr 260°	BXX	VGSI and RNAV glidepath not coincident (VGSI Angle 3.00/TCH 70).		
*LNAV only.	YASCU 2.1 NM to RW25R	UXCUN	ZAMEX	TEYYI	UVIYO	
	*1.4 NM to RW25R					
	1.4 NM	0.7 NM	3.5 NM	3.5 NM	3.6 NM	7.4 NM
CATEGORY	A	B	C	D		
LPV DA		1439-1	305 (400-1)			
LNAV/VNAV DA		1580-1½	446 (500-1½)			
LNAV MDA	1640-1	506 (600-1)	1640-1½	506 (600-1½)		
<b>C</b> CIRCLING	1740-1	605 (700-1)	2040-2¾ 905 (1000-2¾)	2560-3 1425 (1500-3)		

