

VOR/DME GLL <b>114.2</b> Chan <b>89</b>	APP CRS <b>209°</b>	Rwy Idg TDZE Apt Elev <b>4697</b>	<b>N/A</b> <b>N/A</b> <b>4697</b>
---	------------------------	--	---

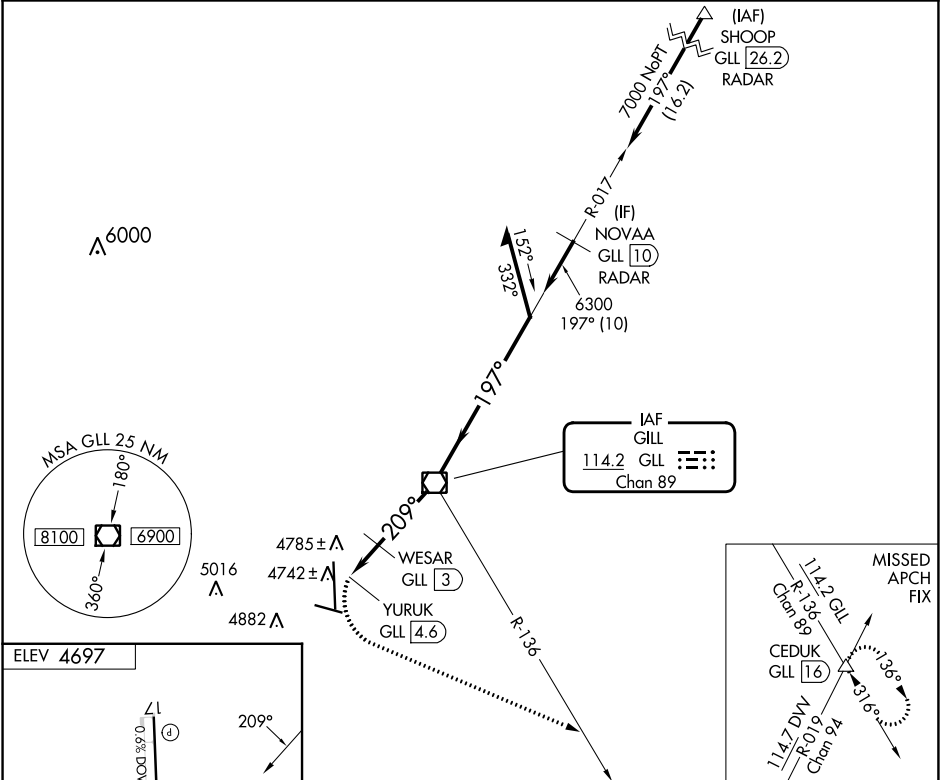
**VOR-A**

GREELEY-WELD COUNTY (GXY)

**⚠** When local altimeter setting not received, use Northern Colorado Rgnl altimeter setting and increase all MDA 100 feet and visibility Cat C/D and WESAR fix minimums Cat C/D visibility ¼ SM. DME required.

MISSED APPROACH: Climbing left turn to 7000 on heading 100° and GLL VOR/DME R-136 to CEDUK INT/GLL 16 DME and hold.

AWOS-3PT <b>135,175</b>	DENVER APP CON <b>134.85 251.125</b>	CLNC DEL <b>126.65</b>	UNICOM <b>122.7 (CTAF)</b>
----------------------------	---	---------------------------	-------------------------------



SW-1, 31 OCT 2024 to 28 NOV 2024

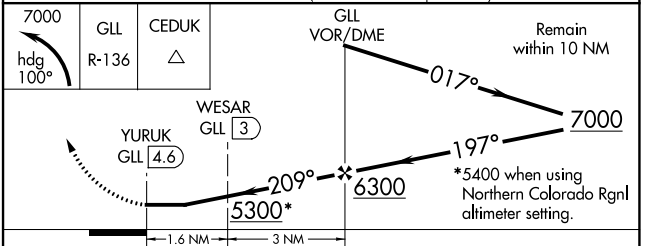
SW-1, 31 OCT 2024 to 28 NOV 2024

**ELEV 4697**

**REIL** Rwys 10, 28, 17 and 35  
**MIRL** Rwys 10-28 and 17-35

FAF to MAP 4.6 NM

Knots	60	90	120	150	180
Min:Sec	4:36	3:04	2:18	1:50	1:32



CATEGORY	A	B	C	D
<b>C</b> CIRCLING	5300-1	603 (700-1)	5300-1¾ 603 (700-1¾)	5380-2¼ 683 (700-2¼)
WESAR FIX MINIMUMS (DME REQUIRED)				
<b>C</b> CIRCLING	5120-1 423 (500-1)	5200-1 503 (600-1)	5200-1½ 503 (600-1½)	5380-2¼ 683 (700-2¼)