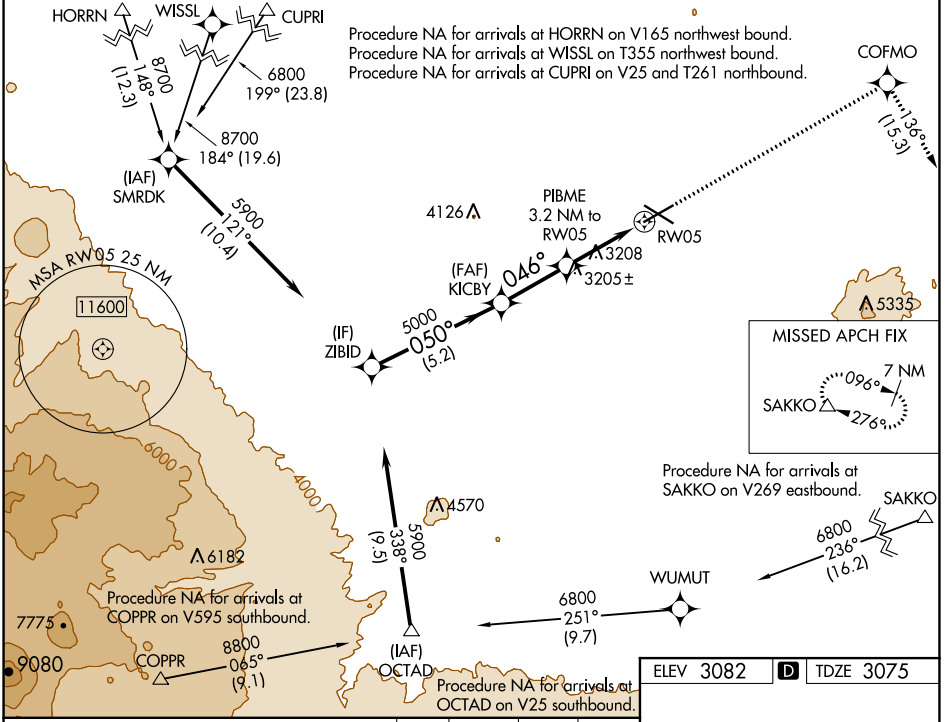


WAAS CH 70514 W05A	APP CRS 046°	Rwy Idg TDZE Apt Elev	7038 3075 3082
--	------------------------	-----------------------------	---

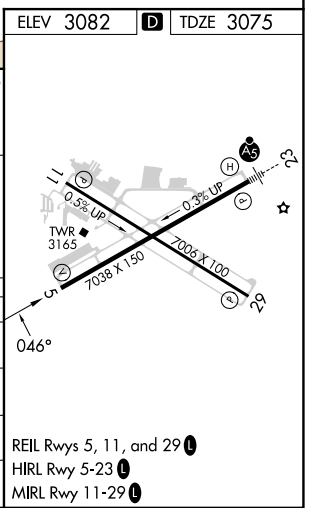
RNAV (GPS) Y RWY 5

ROBERTS FLD (RDM)

RNP APCH.		MISSED APPROACH: Climb to 9500 direct COFMO and on track 136° to SAKKO and hold, continue climb-in-hold to 9500.		
-17°C For uncompensated Baro-VNAV systems, LNAV/VNAV NA below -22°C or above 54°C.		REDMOND TOWER* 124.5 (CTAF) 0 256.8	GND CON 121.8	UNICOM 122.95
ATIS 119.025	SEATTLE CENTER 126.15 269.475			



ZIBID	KICBY	9500	COFMO	tr 136°	SAKKO
5900	5000	PIBME 3.2 NM to RW05	*1.2 NM to RW05		*LNAV only
GP 3.00°	5000	046°	*4140		
TCH 50	5.2 NM	2.7 NM	2 NM	1.2 NM	
CATEGORY	A	B	C	D	
LPV DA		3275-3/4	200 (200-3/4)		
LNAV/VNAV DA		3347-7/8	272 (300-7/8)		
LNAV MDA	3520-1	445 (500-1)	3520-1 3/8	445 (500-1 3/8)	
CIRCLING	3540-1 458 (500-1)	3560-1 478 (500-1)	3640-1 1/2 558 (600-1 1/2)	3740-2 658 (700-2)	



NW-1, 31 OCT 2024 to 28 NOV 2024

NW-1, 31 OCT 2024 to 28 NOV 2024