

(ALPN1.ALPN) 22307

# ALPN ONE DEPARTURE (RNAV)

AL-346 (FAA)

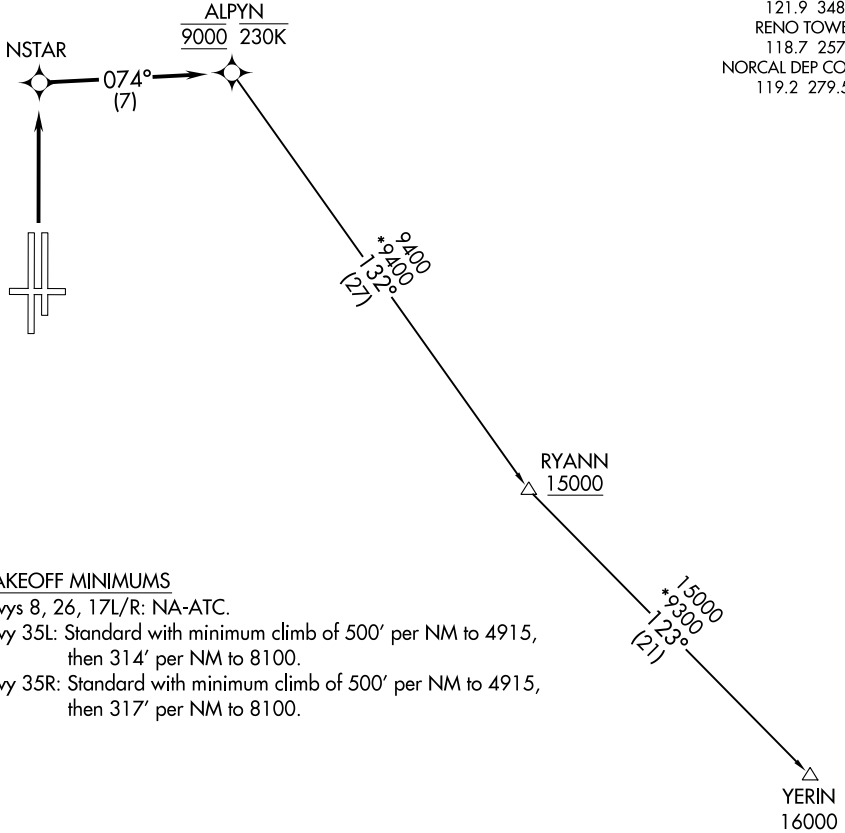
RENO/TAHOE INTL (RNO)  
RENO, NEVADA

**TOP ALTITUDE:**  
**FL190**

RNAV 1 - DME/DME/IRU or GPS.

RADAR required for non-GPS equipped aircraft.

D-ATIS  
135.8 363.0  
CLNC DEL  
124.9 370.85  
CPDLC  
GND CON  
121.9 348.6  
RENO TOWER  
118.7 257.8  
NORCAL DEP CON  
119.2 279.55



### TAKEOFF MINIMUMS

Rwys 8, 26, 17L/R: NA-ATC.

Rwy 35L: Standard with minimum climb of 500' per NM to 4915, then 314' per NM to 8100.

Rwy 35R: Standard with minimum climb of 500' per NM to 4915, then 317' per NM to 8100.

NOTE: Chart not to scale.

### DEPARTURE ROUTE DESCRIPTION

TAKEOFF RUNWAYS 35L/R: Climb direct NSTAR, then on track 074° to cross ALPN at 9000 and at or below 230K, thence . . . .

. . . .on YERIN transition maintain FL190 or assigned altitude. Expect filed altitude 5 minutes after departure.

YERIN TRANSITION (ALPN1.YERIN)

# ALPN ONE DEPARTURE (RNAV)

(ALPN1.ALPN) 03NOV22

RENO, NEVADA  
RENO/TAHOE INTL (RNO)

SW-4, 31 OCT 2024 to 28 NOV 2024

SW-4, 31 OCT 2024 to 28 NOV 2024