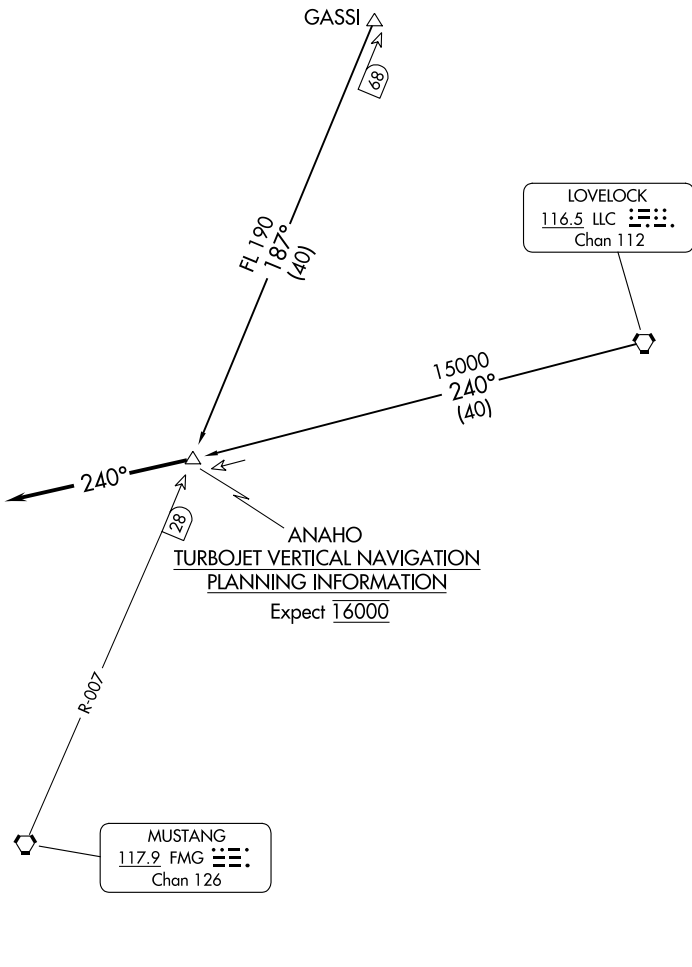


NORCAL APP CON  
 126.3 353.9  
 D-ATIS  
 135.8 363.0



SW-4, 31 OCT 2024 to 28 NOV 2024

SW-4, 31 OCT 2024 to 28 NOV 2024

CAUTION: Intense glider activity up to FL180.

NOTE: RADAR required.

NOTE: Chart not to scale.

**ARRIVAL ROUTE DESCRIPTION**

GASSI TRANSITION (GASSI.ANAHO2): From over GASSI via FMG R-007 to ANAHO INT/DME. Thence. . . .

LOVELOCK TRANSITION (LLC.ANAHO2): From over LLC VORTAC via LLC R-240 to ANAHO INT/DME. Thence. . . .

. . . .Depart ANAHO INT/DME heading 240° for vectors to final approach course.