

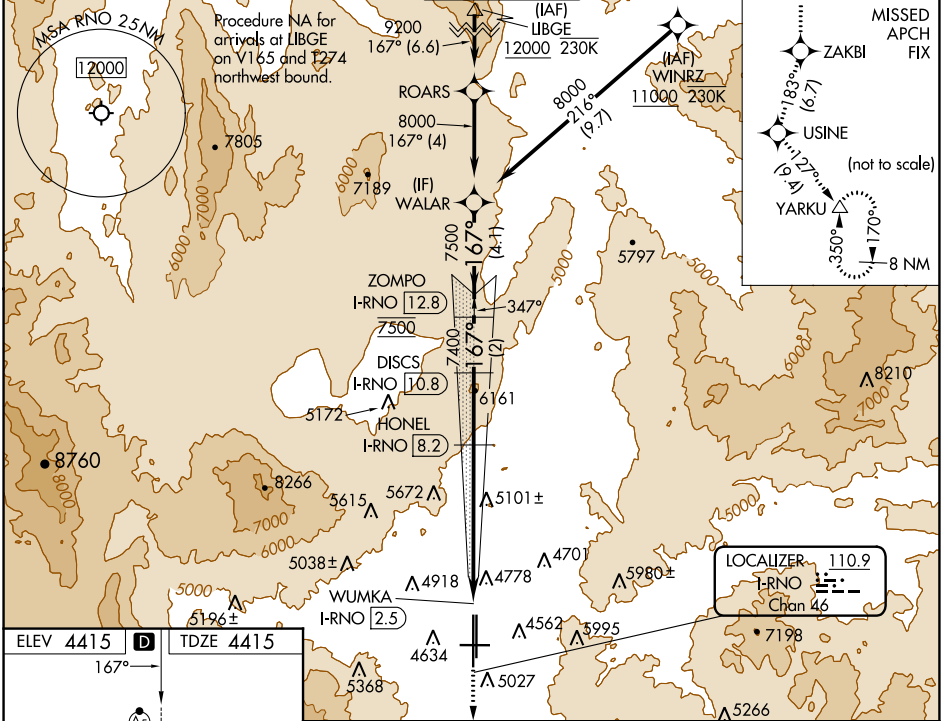
LOC/DME I-RNO 110.9 Chan 46	APP CRS 167°	Rwy Idg TDZE Apt Elev	10011 4415 4415
---	------------------------	-----------------------------	--

ILS X or LOC X RWY 17R

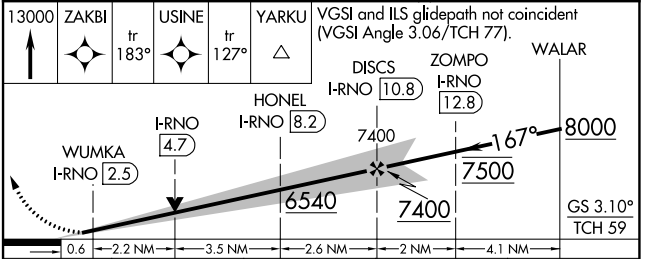
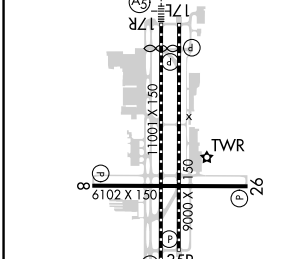
RENO/TAHOE INTL (RNO)

DME required. RNP APCH - GPS.		MALSR	MISSED APPROACH: Climb to 13000 on the RNAV missed approach route to YARKU and hold, continue climb-in-hold to 13000. *Missed approach requires minimum climb of 390 feet per NM to 8000.	
<p>⚠ Circling Rwy 8 NA at night.</p> <p>⚠ *RVR 1800 authorized with use of FD or AP or HUD to DA.</p> <p>⚠ -13°C # For inop ALS, increase S-ILS 17R all Cats visibility to 2 SM.</p>				

D-ATIS 135.8 363.0	NORCAL APP CON 119.2 279.55 126.3 353.9	RENO TOWER 118.7 257.8	GND CON 121.9 348.6	CLNC DEL 124.9 370.85	CPDLC
------------------------------	---	----------------------------------	-------------------------------	---------------------------------	-------



ELEV 4415	D	TDZE 4415
167°		



CATEGORY	A	B	C	D
S-ILS 17R*		4615/24	200 (200-1/2)	
S-ILS 17R#		5138-1 5/8	723 (800-1 5/8)	
S-LOC 17R	5420/40 1005 (1100-3/4)	5420/55 1005 (1100-1)	5420-2 1/2	1005 (1100-2 1/2)
C CIRCLING	5420-1 1/4 1005 (1100-1 1/4)	5420-1 1/2 1005 (1100-1 1/2)	6480-3	2065 (2100-3)

MIRL Rwy 8-26
REIL Rws 8, 17L, 26, and 35R
HIRL Rws 17R-35L and 17L-35R

SW-4, 31 OCT 2024 to 28 NOV 2024

SW-4, 31 OCT 2024 to 28 NOV 2024