

LOC/DME I-RNO	APP CRS	Rwy Idg	17R	17L
110.9	167°	TDZE	10001 4415	9000 4415
Chan 46		Apt Elev	4415 4415	4415

LOC Y RWY 17R

RENO/TAHOE INTL (RNO)

DME required.

⚠ Circling Rwy 8 NA at night. For inop ALS, increase S-LOC 17R* Cat E visibility to 3 SM. Circling NA for Cat E southwest **35**-13°C of Rwy 8 and 35L.

Inop table does not apply to Cats C, D and E.

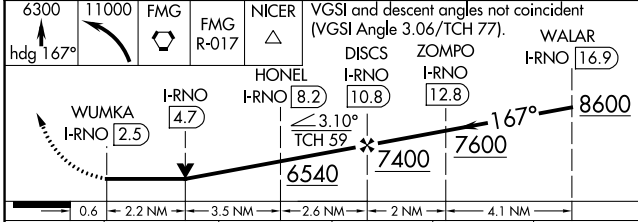
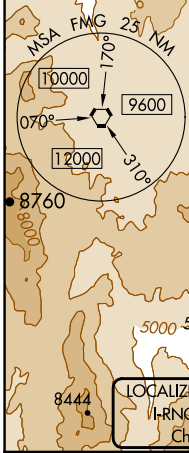
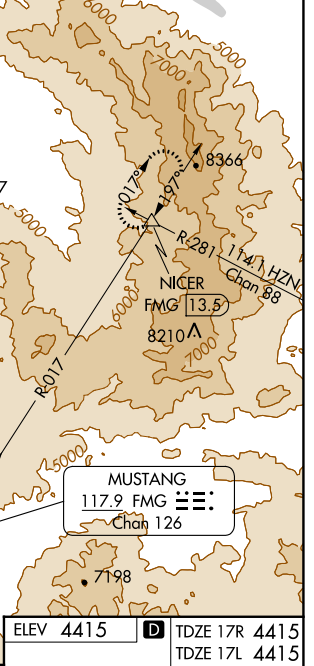
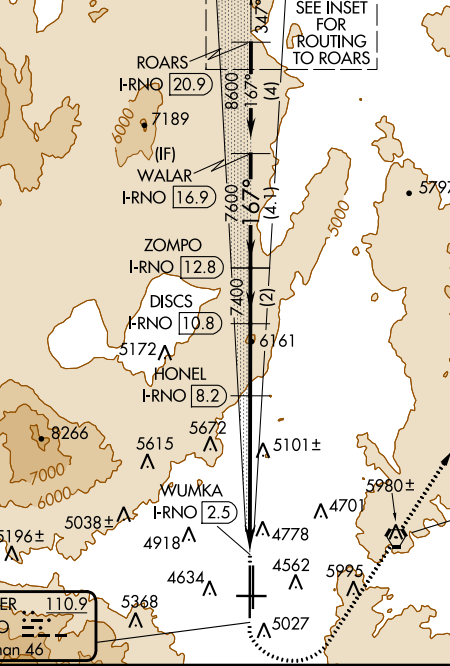
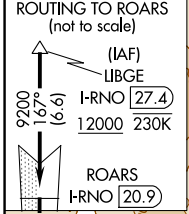
MALSR 17R

MISSED APPROACH: Climb to 6300 on heading 167° then climbing left turn 11000 direct FMG VORTAC and on FMG VORTAC R-017 to NICER INT and hold, continue climb-in-hold to 11000.

* Missed approach requires minimum climb of 320 feet per NM to 8000.

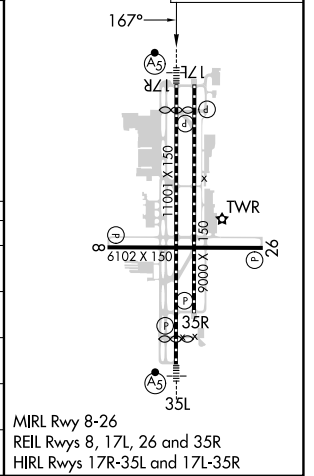
† Missed approach requires minimum climb of 260 feet per NM to 8000.

D-ATIS	NORCAL APP CON	RENO TOWER	GND CON	CLNC DEL	CPDLC
135.8 363.0	119.2 279.55	126.3 353.9	118.7 257.8	121.9 348.6	124.9 370.85



ELEV 4415	D TDZE 17R 4415
	TDZE 17L 4415

CATEGORY	A	B	C	D	E
S-LOC 17R*	5420/40 1005 (1100-3/4)	5420/55 1005 (1100-1)	5420-2 1/2	1005 (1100-2 1/2)	
SIDESTEP 17L*#	5420-1 1/4 1005 (1100-1 1/4)	5420-1 1/2 1005 (1100-1 1/2)	5420-3	1005 (1100-3)	
S-LOC 17RT#	5720/40 1305 (1400-3/4)	5720/55 1305 (1400-1)	5720-3	1305 (1400-3)	
S-LOC 17R#	5920/40 1505 (1600-3/4)	5920/55 1505 (1600-1)	5920-3	1505 (1600-3)	6180-3 1765 (1800-3)
C CIRCLING	5920-1 1/4 1505 (1600-1 1/4)	5920-1 1/2 1505 (1600-1 1/2)	6480-3	2065 (2100-3)	6700-3 2285 (2300-3)



SW-4, 31 OCT 2024 to 28 NOV 2024

SW-4, 31 OCT 2024 to 28 NOV 2024