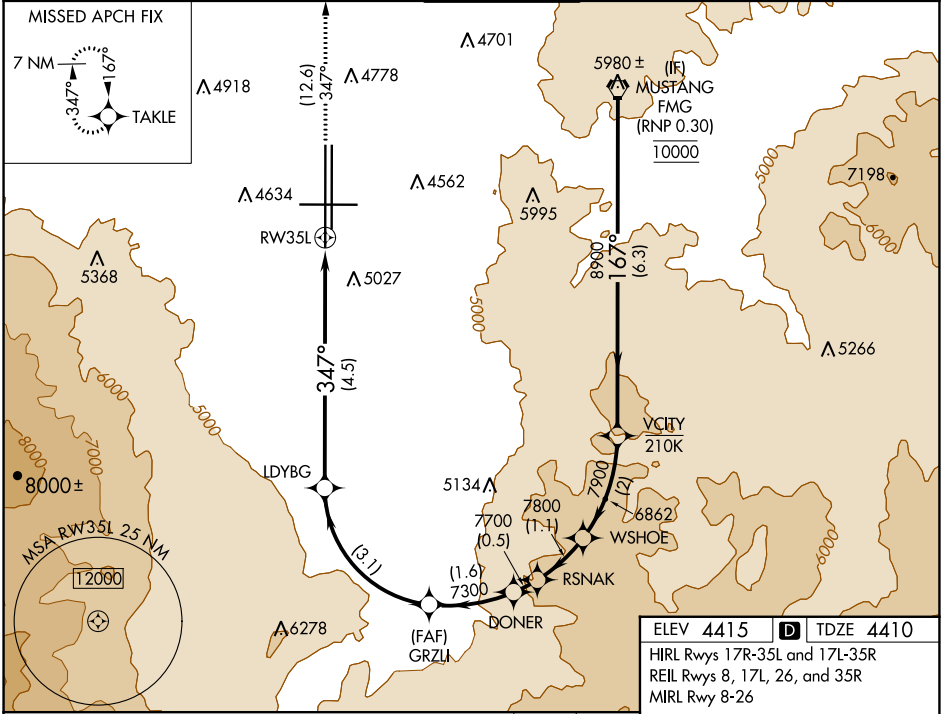


# RNAV (RNP) W RWY 35L

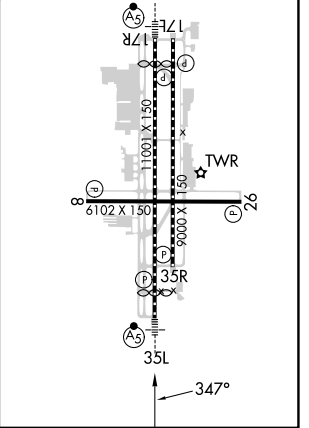
RENO/TAHOE INTL (RNO)

APP CRS <b>347°</b>	Rwy Idg <b>10011</b>
	TDZE <b>4410</b>
	Apt Elev <b>4415</b>

RNP AR APCH - GPS.		MALSR	MISSED APPROACH: Climb to 11000 on track 347° to TAKLE and hold, continue climb-in-hold to 11000. *Missed approach requires minimum climb of 300 feet per NM to 7140.			
<p>For uncompensated Baro-VNAV systems, procedure NA below -9°C or above 35°C.</p> <p>-13°C</p>						
D-ATIS <b>135.8 363.0</b>	NORCAL APP CON <b>119.2 279.55 126.3 353.9</b>		RENO TOWER <b>118.7 257.8</b>	GND CON <b>121.9 348.6</b>	CLNC DEL <b>124.9 370.85</b>	CPDLC



FMG VORTAC		VCITY		WSHOE		RSNAK		DONER		GRZLI		LDYBG		RW35L	
10000		7900		7800		7700		7300		6155		8900		7900	
GP 3.50° TCH 72															
6.3 NM		2 NM		1.1 NM		0.5 NM		1.6 NM		3.1 NM		4.5 NM			
CATEGORY		A		B		C		D							
RNP 0.10 DA*				4736-1/2		326 (400-1/2)									
RNP 0.30 DA				5349-2		939 (1000-2)									
<b>AUTHORIZATION REQUIRED</b>															



SW-4, 31 OCT 2024 to 28 NOV 2024

SW-4, 31 OCT 2024 to 28 NOV 2024