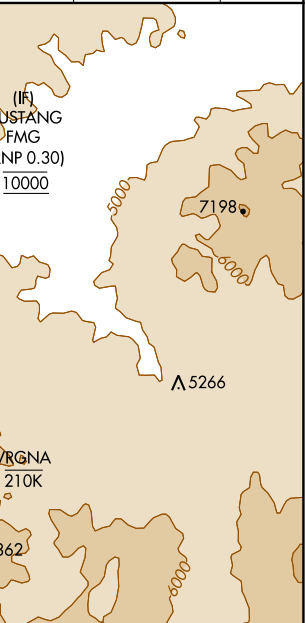
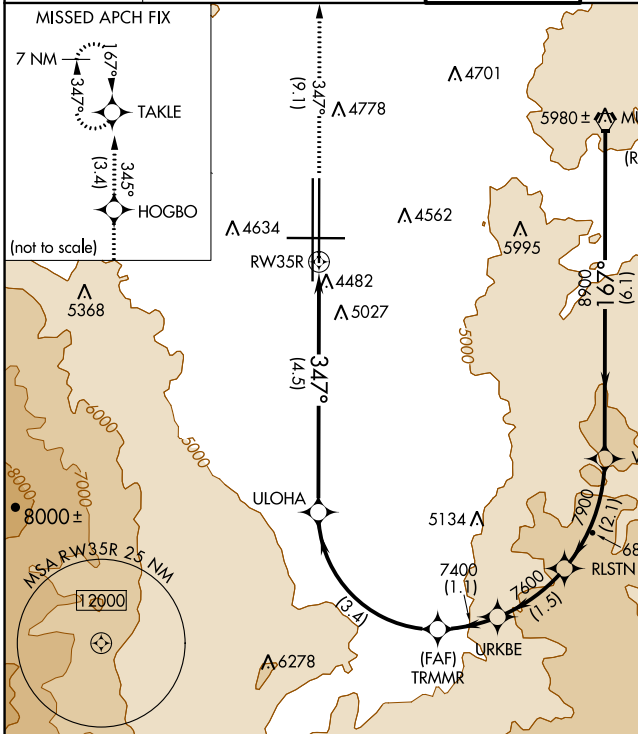


APP CRS 347°	Rwy Idg TDZE Apt Elev	9000 4408 4415
------------------------	-----------------------------	---

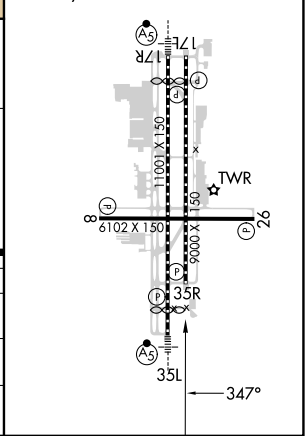
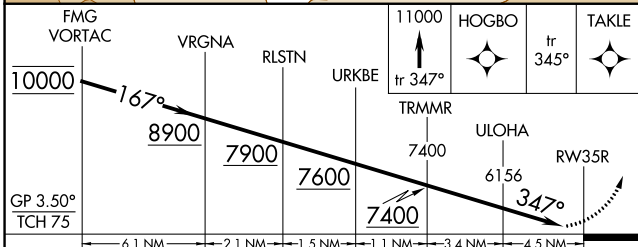
RNAV (RNP) W RWY 35R

RENO/TAHOE INTL (RNO)

RNP AR APCH - GPS.		MISSED APPROACH: Climb to 11000 on track 347° to HOGBO and on track 345° to TAKLE and hold, continue climb-in-hold to 11000. *Missed approach requires minimum climb of 301 feet per NM to 7150.			
<p>For uncompensated Baro-VNAV systems, procedure NA below -9°C or above 34°C. -13°C</p>		D-ATIS 135.8 363.0		NORCAL APP CON 119.2 279.55 126.3 353.9	
RENO TOWER 118.7 257.8		GND CON 121.9 348.6		CLNC DEL 124.9 370.85	
				CPDLC	



ELEV 4415	TDZE 4408
HIRL Rwys 17R-35L and 17L-35R	
REIL Rwys 8, 17L, 26, and 35R	
MIRL Rwy 8-26	



CATEGORY	A	B	C	D
RNP 0.11 DA*	4762-1 354 (400-1)			
RNP 0.30 DA	5349-2½ 941 (1000-2½)			
AUTHORIZATION REQUIRED				

SW-4, 31 OCT 2024 to 28 NOV 2024

SW-4, 31 OCT 2024 to 28 NOV 2024