

RNAV (RNP) Z RWY 17L

RENO/TAHOE INTL (RNO)

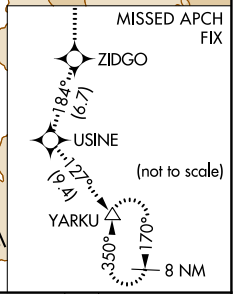
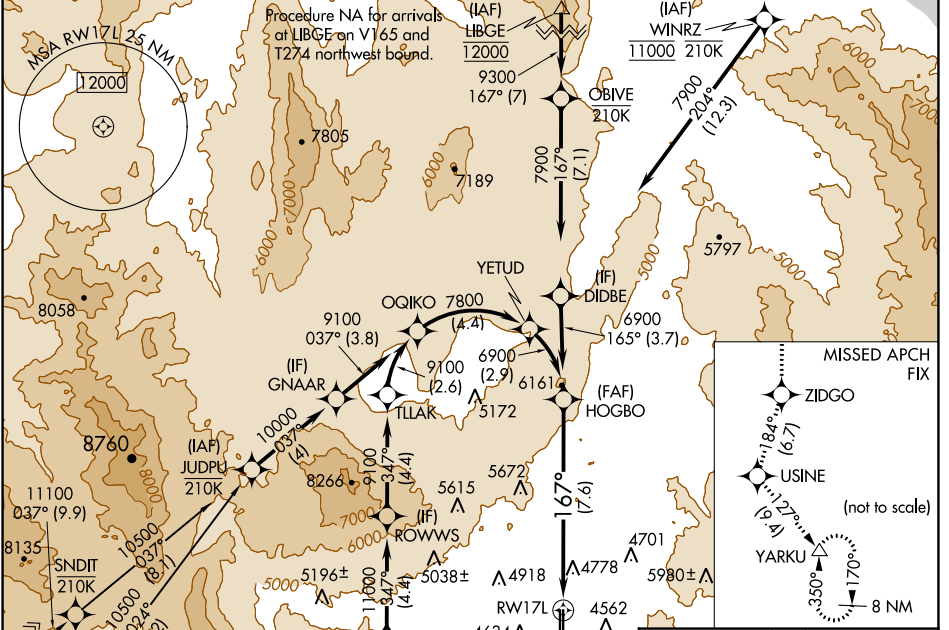
APP CRS	Rwy Idg	9000
167°	TDZE	4415
	Apt Elev	4415

RNP AR APCH - GPS.

⚠ For uncompensated Baro-VNAV systems, procedure NA below -9°C or above 54°C.

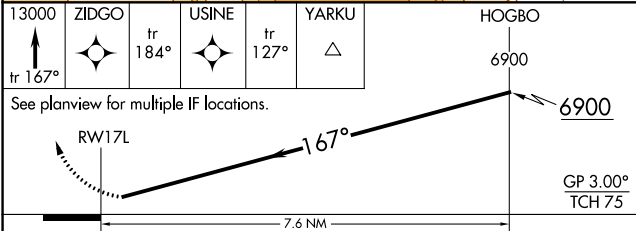
MISSED APPROACH: Climb to 13000 on track 167° to ZIDGO and on track 184° to USINE and on track 127° to YARKU and hold, continue climb-in-hold to 13000.
 # Missed approach requires minimum climb of 203 feet per NM to 5040.
 * Missed approach requires minimum climb of 264 feet per NM to 7260.

D-ATIS	NORCAL APP CON	RENO TOWER	GND CON	CLNC DEL	CPDLC
135.8 363.0	119.2 279.55 126.3 353.9	118.7 257.8	121.9 348.6	124.9 370.85	

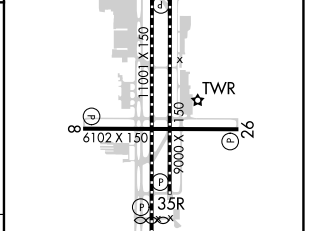


13000	ZIDGO	USINE	YARKU	HOGBO
↑	tr 184°	tr 127°	△	6900
tr 167°				

See planview for multiple IF locations.



ELEV 4415	TDZE 4415
-----------	-----------



CATEGORY	A	B	C	D
RNP 0.12 DA*		4754-1	339 (400-1)	
RNP 0.17 DA#		5017-1¾	602 (700-1¾)	
RNP 0.30 DA		5067-1⅞	652 (700-1⅞)	

AUTHORIZATION REQUIRED

MIRL Rwy 8-26
 REIL Rwy 8, 17L, 26, and 35R
 HIRL Rwy 17R-35L and 17L-35R

SW-4, 31 OCT 2024 to 28 NOV 2024

SW-4, 31 OCT 2024 to 28 NOV 2024