

APP CRS <b>167°</b>	Rwy Idg TDZE Apt Elev <b>10001 4415 4415</b>
------------------------	---

# RNAV (RNP) Z RWY 17R

RENO/TAHOE INTL (RNO)

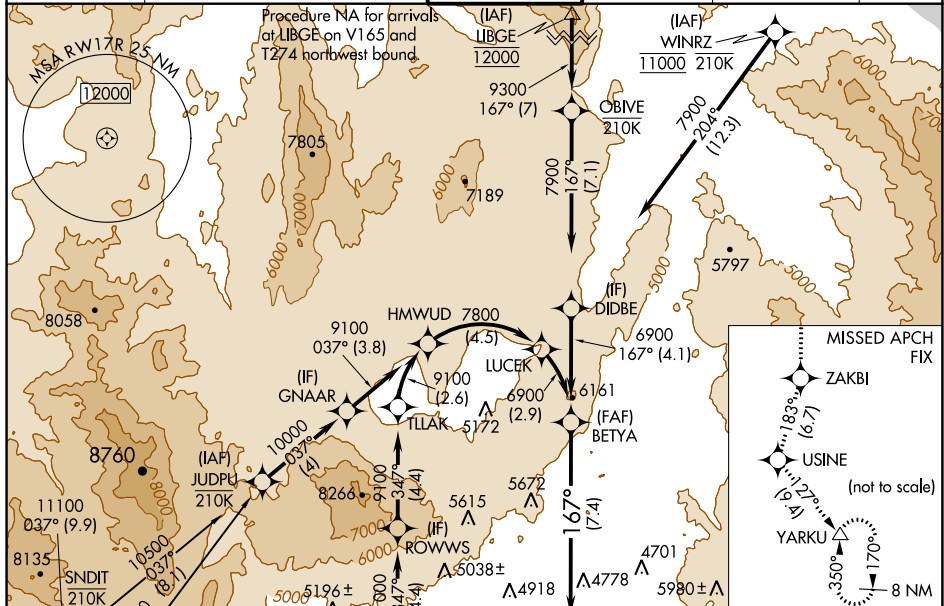
RNP AR APCH - GPS.

▼ For uncompensated Baro-VNAV systems,  
procedure NA below -9°C or above 54°C.  
For inop ALS, increase RNP 0.30 DA  
visibility all Cats to 1½ SM.

MALSRR

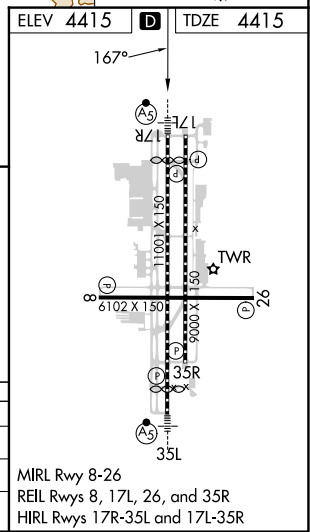
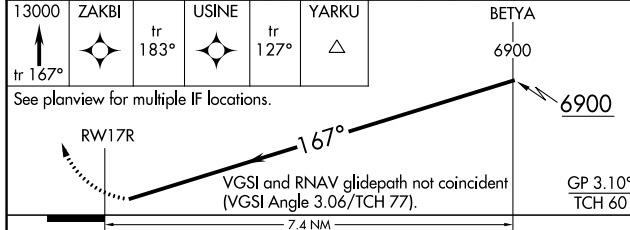
MISSED APPROACH: Climb to 13000 on track 167° to ZAKBI and on track 183° to USINE and on track 127° to YARKU and hold, continue climb-in-hold to 13000.  
\*Missed approach requires minimum climb of 266 feet per NM to 7240.

D-ATIS	NORCAL APP CON	RENO TOWER	GND CON	CLNC DEL	CPDLC
<b>135.8 363.0</b>	<b>119.2 279.55 126.3 353.9</b>	<b>118.7 257.8</b>	<b>121.9 348.6</b>	<b>124.9 370.85</b>	



13000	ZAKBI	USINE	YARKU	BETYA
tr 167°	tr 183°	tr 127°	△	6900

See planview for multiple IF locations.



CATEGORY	A	B	C	D
RNP 0.10 DA*		4754/26	339 (400-½)	
RNP 0.30 DA		5092-1½	677 (700-1½)	

## AUTHORIZATION REQUIRED