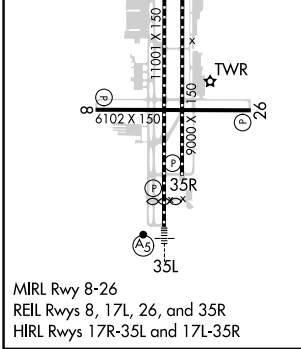
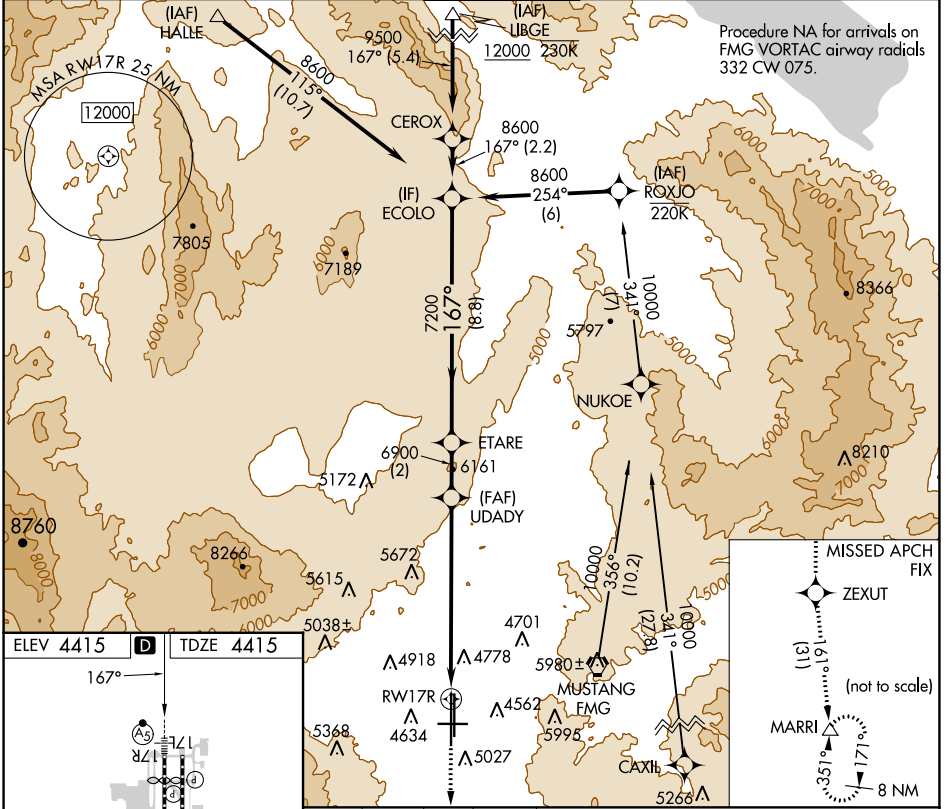


WAAS CH 78309 W17B	APP CRS 167°	Rwy Idg TDZE Apt Elev	10001 4415 4415
--	------------------------	-----------------------------	--

RNAV (GPS) X RWY 17R

RENO/TAHOE INTL (RNO)

RNP APCH - GPS.				MALSR	MISSED APPROACH: Climb to 13000 direct ZEXUT and on track 161° to MARRI and hold.	
<p>▼ For inop ALS, increase LPV all Cats visibility to 2 1/2 SM. ▲ Inop table does not apply to LNAV all Cats. ☁ -13°C</p>						
D-ATIS 135.8 363.0	NORCAL APP CON 119.2 279.55 126.3 353.9		RENO TOWER 118.7 257.8	GND CON 121.9 348.6	CLNC DEL 124.9 370.85	CPDLC



13000	ZEXUT	MARRI	VGSI and RNAV glidepath not coincident (VGSI Angle 3.06/TCH 77).	
↑	◆	△	UDADY	ETARE
	tr 161°		ECOLO	
RWY 17R		5.2 NM to RWY 17R	6900	7200
-5.2 NM		-2.1 NM	-2 NM	8.8 NM
CATEGORY	A	B	C	D
LPV DA	5239-1 7/8 824 (900-1%)			
LNAV MDA	6200/40 1785 (1800-3/4)	6200/55 1785 (1800-1)	6200-3	1785 (1800-3)

SW-4, 31 OCT 2024 to 28 NOV 2024

SW-4, 31 OCT 2024 to 28 NOV 2024