

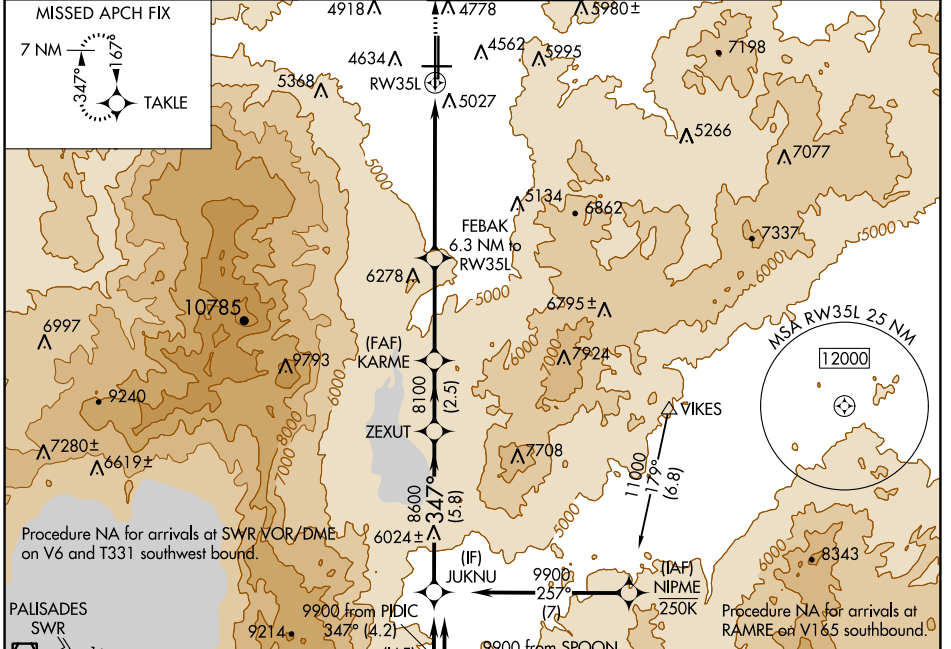
APP CRS 347°	Rwy Idg 10011 TDZE 4410 Apt Elev 4415
------------------------	--

RNAV (GPS) X RWY 35L

RENO/TAHOE INTL (RNO)

RNP APCH - GPS	MALS/R	MISSED APPROACH: Climb to 11000 direct TAKLE and hold, continue climb-in-hold to 11000. *MISSED approach requires minimum climb of 250 feet per NM to 5600.

D-ATIS 135.8 363.0	NORCAL APP CON 119.2 279.55 126.3 353.9	RENO TOWER 118.7 257.8	GND CON 121.9 348.6	CLNC DEL 124.9 370.85	CPDLC
------------------------------	---	----------------------------------	-------------------------------	---------------------------------	-------

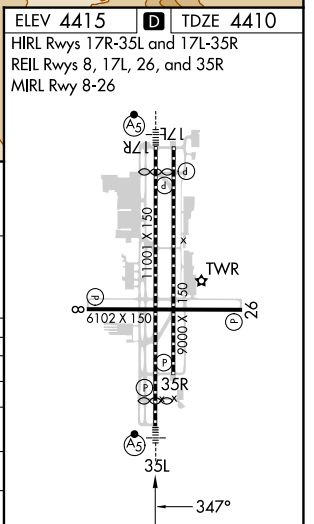
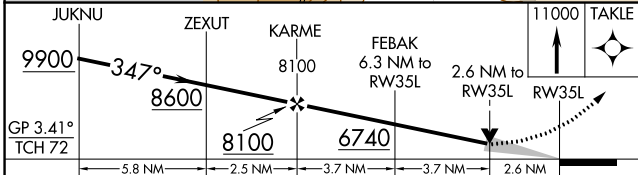


ELEV 4415	TDZE 4410
HIRL Rwy 17R-35L and 17L-35R	
REIL Rwy 8, 17L, 26, and 35R	
MIRL Rwy 8-26	

Procedure NA for arrivals at SWR/VOR/DME on V6 and T331 southwest bound.

Procedure NA for arrivals at RICHY on V28-113 southwest bound.

Procedure NA for arrivals at RAMRE on V165 southwest bound.



CATEGORY	A	B	C	D
LNAV/VNAV DA*	5480-4 1070 (1100-4)			
LNAV/VNAV DA	5521-4 1111 (1200-4)			
LNAV MDA*	5480-3/4 1070 (1100-3/4)	5480-1 1070 (1100-1)	5480-2 1/2 1070 (1100-2 1/2)	1070 (1100-2 1/2)
LNAV MDA	5560-3/4 1150 (1200-3/4)	5560-1 1150 (1200-1)	5560-3 1150 (1200-3)	1150 (1200-3)
CIRCLING	5560-1 1/4 1145 (1200-1 1/4)	5560-1 1/2 1145 (1200-1 1/2)	6460-3 2045 (2100-3)	2045 (2100-3)

SW-4, 31 OCT 2024 to 28 NOV 2024

SW-4, 31 OCT 2024 to 28 NOV 2024