

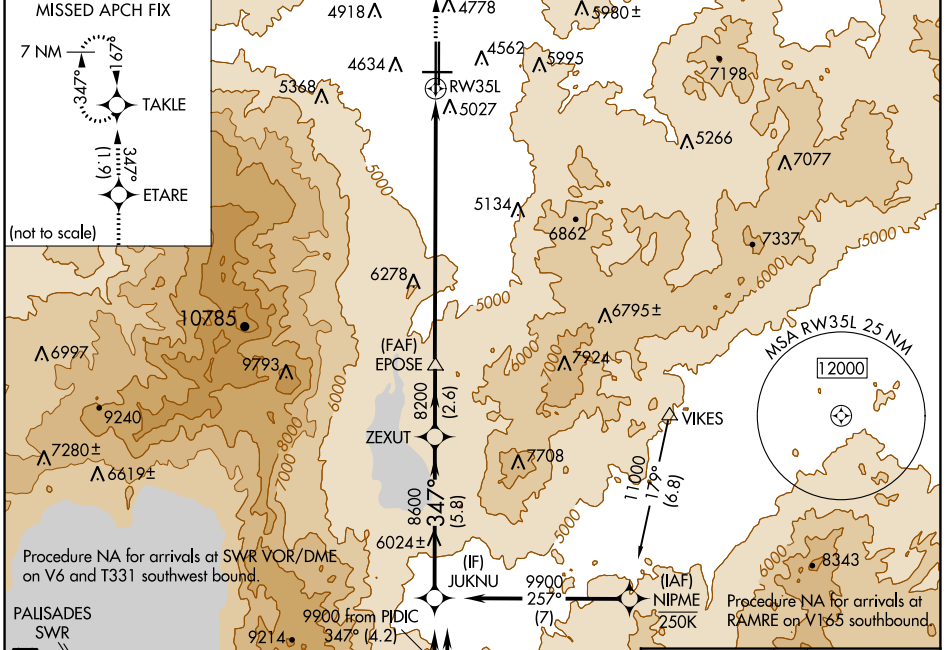
WAAS CH <b>82609</b> <b>W35A</b>	APP CRS <b>347°</b>	Rwy ldg <b>10011</b> TDZE <b>4410</b> Apt Elev <b>4415</b>
--	------------------------	--

# RNAV (GPS) Y RWY 35L

RENO/TAHOE INTL (RNO)

RNP APCH - GPS.	MALSR	MISSED APPROACH: Climb to 11000 direct ETARE and on track 347° to TAKLE and hold, continue climb-in-hold to 11000. *Missed approach requires minimum climb to 260 feet per NM to 6860.
For inop ALS increase LPV all Cats visibility to 3 SM. -13°C		

D-ATIS <b>135.8 363.0</b>	NORCAL APP CON <b>119.2 279.55 126.3 353.9</b>	RENO TOWER <b>118.7 257.8</b>	GND CON <b>121.9 348.6</b>	CLNC DEL <b>124.9 370.85</b>	CPDLC
------------------------------	---	----------------------------------	-------------------------------	---------------------------------	-------

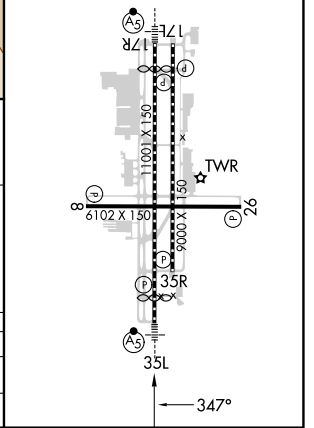
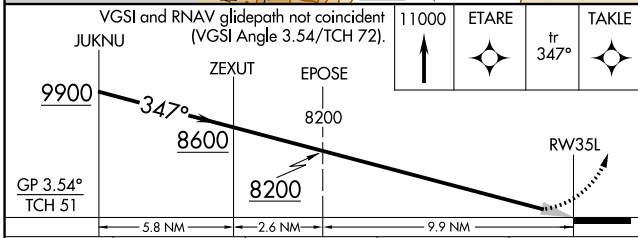
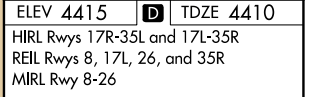


ELEV 4415	<b>D</b> TDZE 4410
HIRL Rwys 17R-35L and 17L-35R	
REIL Rwys 8, 17L, 26, and 35R	
MIRL Rwy 8-26	

Procedure NA for arrivals at SWR VOR/DME on V6 and T331 southwest bound.

PALISADES SWR

Procedure NA for arrivals at RICHY on V28-113 southwest bound.



CATEGORY	A	B	C	D
LPV DA*	4740-1/2	330 (400-1/2)		NA
LPV DA	5384-2 1/2	974 (1000-2 1/2)		NA

SW-4, 31 OCT 2024 to 28 NOV 2024

SW-4, 31 OCT 2024 to 28 NOV 2024