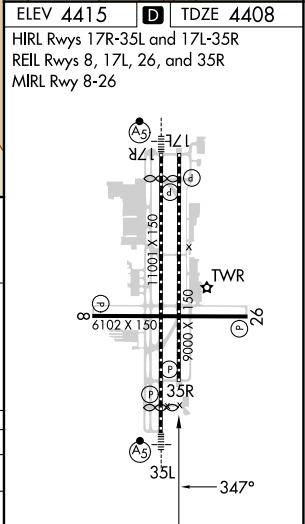
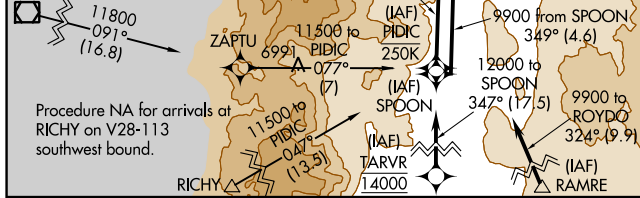
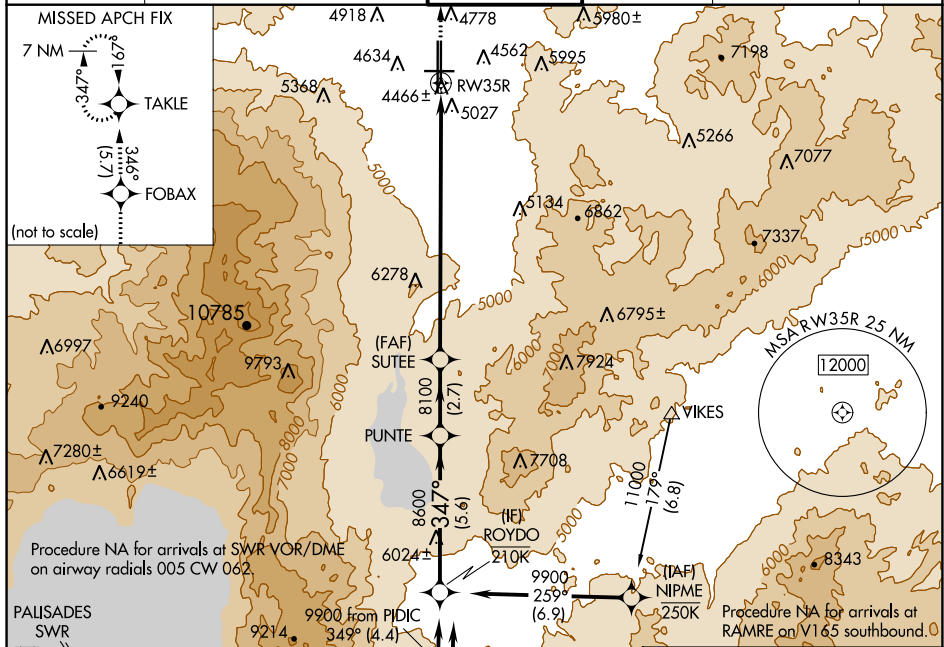


WAAS CH <b>40409</b> <b>W35B</b>	APP CRS <b>347°</b>	Rwy Idg TDZE <b>4408</b> Apt Elev <b>4415</b>
--	------------------------	---

# RNAV (GPS) Y RWY 35R

RENO/TAHOE INTL (RNO)

RNP APCH - GPS.		MISSED APPROACH: Climb to 11000 direct FOBAX and on track 346° to TAKLE and hold, continue climb-in-hold to 11000. *Missed approach requires minimum climb of 250 feet per NM to 6100.			
<p>▼ Rwy 35R helicopter visibility reduction below NA</p> <p>☼ -13°C</p>		<p>Rwy 35R helicopter visibility reduction below 1/4 SM NA.</p>			
D-ATIS	NORCAL APP CON	RENO TOWER	GND CON	CLNC DEL	CPDLC
135.8 363.0	119.2 279.55 126.3 353.9	118.7 257.8	121.9 348.6	124.9 370.85	



VGSIs and descent angles not coincident (VGSIs Angle 3.35/TCH 75).					
ROYDO	PUNTE	SUTEE	FOBAX	TAKLE	
9900	8600	8100	11000	tr 346°	
GP 3.44°		8100			RW35R
	5.6 NM	2.7 NM	9.9 NM		
CATEGORY	A	B	C	D	
LPV DA*	4780-1 372 (400-1)				
LPV DA	5379-3 971 (1000-3)				