

(ZEFFR9.ZEFFF) 24193

ZEFFR NINE DEPARTURE (RNAV)

AL-346 (FAA)

RENO/TAHOE INTL (RNO)
RENO, NEVADA

NORCAL DEP CON
119.2 279.55
D-ATIS
135.8 363.0
CLNC DEL
124.9 370.85
GND CON
121.9 348.6
RENO TOWER
118.7 257.8

RNAV 1 - GPS.

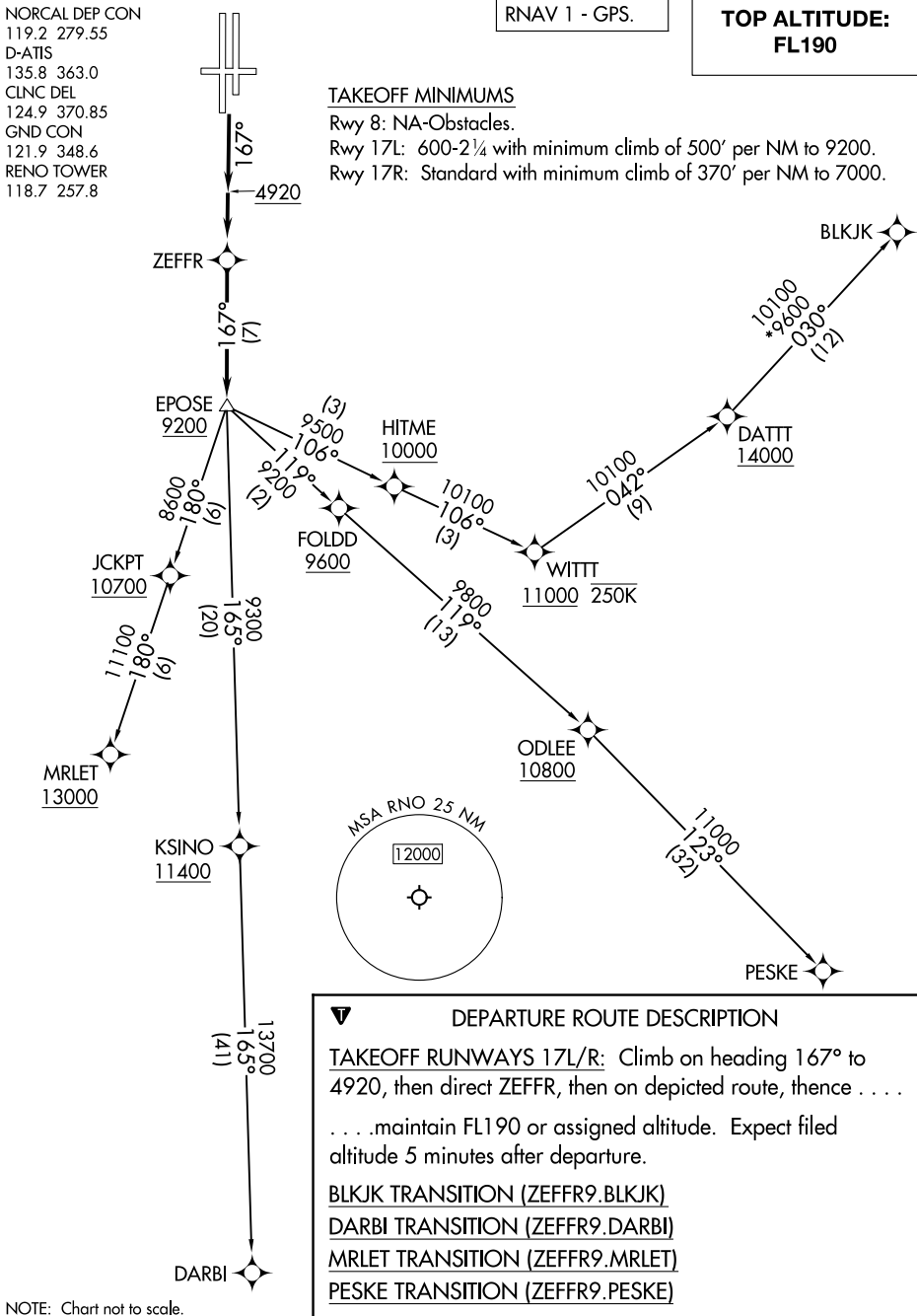
**TOP ALTITUDE:
FL190**

TAKEOFF MINIMUMS

Rwy 8: NA-Obstacles.
Rwy 17L: 600-2¼ with minimum climb of 500' per NM to 9200.
Rwy 17R: Standard with minimum climb of 370' per NM to 7000.

SW-4, 31 OCT 2024 to 28 NOV 2024

SW-4, 31 OCT 2024 to 28 NOV 2024



▼ DEPARTURE ROUTE DESCRIPTION

TAKEOFF RUNWAYS 17L/R: Climb on heading 167° to 4920, then direct ZEFFR, then on depicted route, thence
. . . .maintain FL190 or assigned altitude. Expect filed altitude 5 minutes after departure.

BLKJK TRANSITION (ZEFFR9.BLKJK)
DARBI TRANSITION (ZEFFR9.DARBI)
MRLET TRANSITION (ZEFFR9.MRLET)
PESKE TRANSITION (ZEFFR9.PESKE)

NOTE: Chart not to scale.

ZEFFR NINE DEPARTURE (RNAV)

(ZEFFR9.ZEFFF) 11JUL24

RENO, NEVADA
RENO/TAHOE INTL (RNO)