

(CGULL1.CGULL) 18144

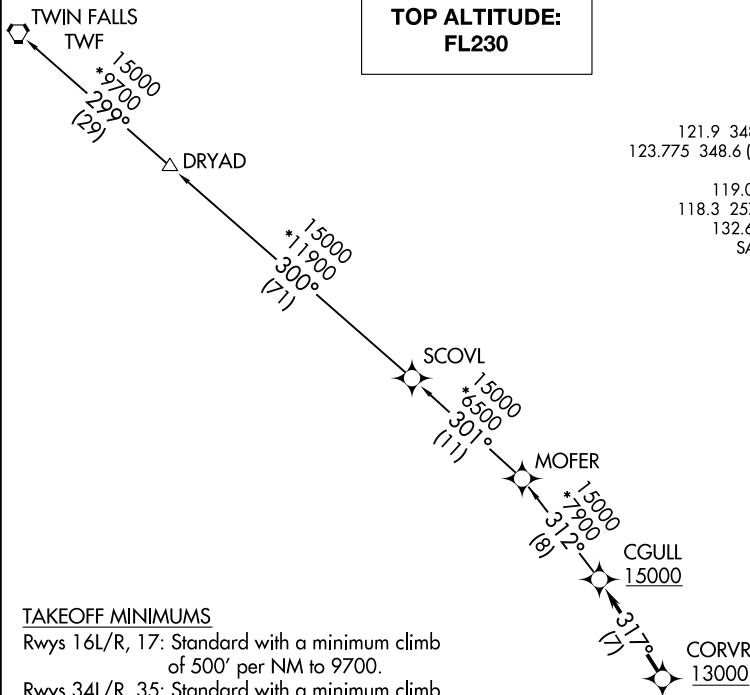
CGULL ONE DEPARTURE (RNAV)

AL-365 (FAA)

SALT LAKE CITY INTL (SLC)
SALT LAKE CITY, UTAH

**TOP ALTITUDE:
FL230**

D-ATIS
124.75 125.625
CLNC DEL
127.3 379.975
CPDLC
GND CON
121.9 348.6 (Rwys 14-32, 17-35)
123.775 348.6 (Rwys 16L-34R, 16R-34L)
SALT LAKE CITY TOWER
119.05 257.8 (Rwy 16L-34R)
118.3 257.8 (Rwys 14-32, 17-35)
132.65 336.4 (Rwy 16R-34L)
SALT LAKE CITY DEP CON
126.25 353.825



TAKEOFF MINIMUMS

Rwys 16L/R, 17: Standard with a minimum climb of 500' per NM to 9700.

Rwys 34L/R, 35: Standard with a minimum climb of 260' per NM to 7800.

Rwys 14, 32: NA - ATC

NOTE: RNAV 1.

NOTE: DME/DME/IRU or GPS required.

NOTE: RADAR required.

NOTE: Turbojet aircraft only.

NOTE: Aircraft landing Twin Falls Airport, file DRYAD transition.

NOTE: Chart not to scale.

DEPARTURE ROUTE DESCRIPTION

TAKEOFF RUNWAYS 16L/R, 17: Climbing right turn on a heading between 280° CW 340° as assigned by ATC, thence. . . .

TAKEOFF RUNWAYS 34L/R, 35: Climbing left turn on a heading between 320° CCW 260° as assigned by ATC, thence. . . .

. . . on RADAR vectors to cross CORVR at or above 13000, then on track 317° to cross CGULL at or above 15000, then on (transition). Maintain FL230 or lower filed altitude. Expect filed altitude 10 minutes after departure.

DRYAD TRANSITION (CGULL1.DRYAD)

TWIN FALLS TRANSITION (CGULL1.TWF)



SW-4, 31 OCT 2024 to 28 NOV 2024

SW-4, 31 OCT 2024 to 28 NOV 2024

CGULL ONE DEPARTURE (RNAV)
(CGULL1.CGULL) 24MAY18

SALT LAKE CITY, UTAH
SALT LAKE CITY INTL (SLC)