

WAAS CH 82338 W17A	APP CRS 169°	Rwy Idg TDZE Apt Elev	9596 4219 4227
--	------------------------	-----------------------------	---

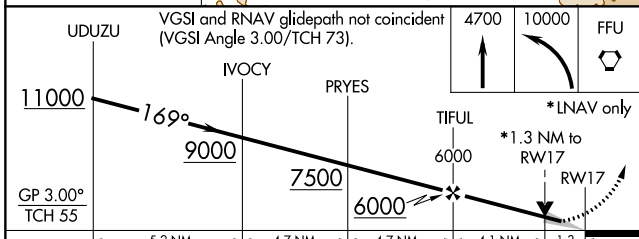
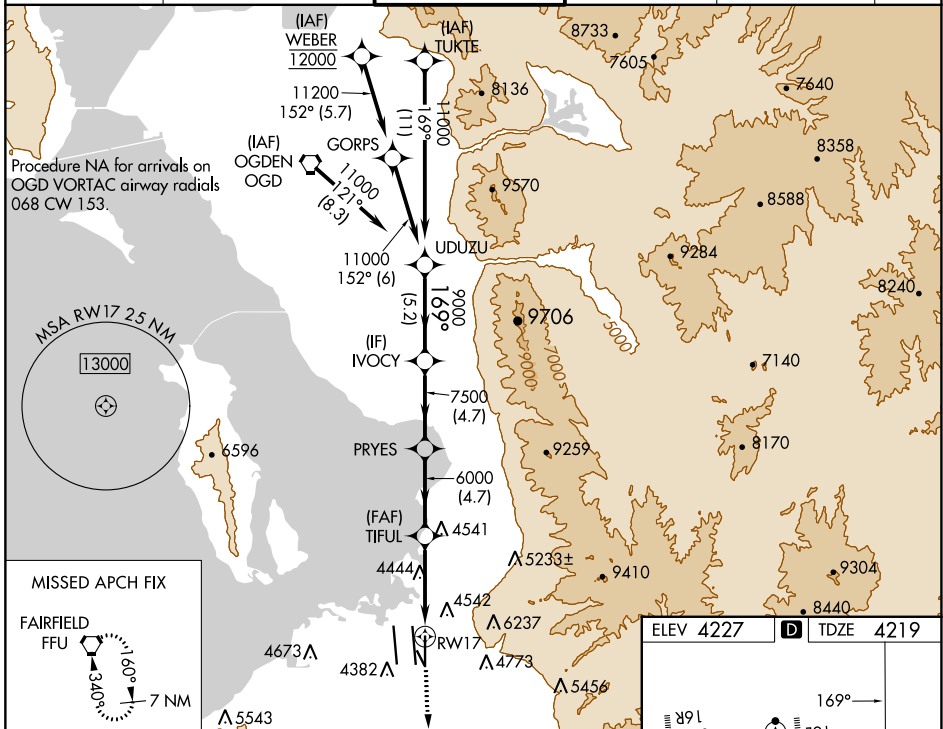
RNAV (GPS) RWY 17

SALT LAKE CITY INTL (SLC)

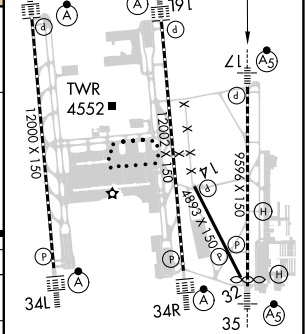
▼ For uncompensated Baro-VNAV systems, LNAV/VNAV NA below -14°C (7°F) or above 49°C (121°F). DME/DME RNP-0.3 NA. For inop ALS, increase LPV Cat E visibility to RVR 4000, LNAV/VNAV Cat E visibility to RVR 6000, and LNAV Cat C/D/E visibility to 1½ SM. Simultaneous approach authorized. LNAV procedure NA during simultaneous operations. Use of FD or AP providing RNAV track guidance required during simultaneous operations.

MALSRS
MISSED APPROACH: Climb to 4700 then climbing left turn to 10000 direct FFU VORTAC and hold.

D-ATIS 124.75 125.625	SALT LAKE CITY APP CON 125.7 284.6	SALT LAKE CITY TOWER 118.3 257.8	GND CON 121.9 348.6	CLNC DEL 127.3 379.975	CPDLC
---------------------------------	--	--	-------------------------------	----------------------------------	-------



ELEV 4227	D TDZE 4219
-----------	--------------------



UDUZU	VGSI and RNAV glidepath not coincident (VGSI Angle 3.00/TCH 73).				
11000	9000	7500	6000	4700	10000
GP 3.00° TCH 55	5.2 NM	4.7 NM	4.7 NM	4.1 NM	1.3
CATEGORY	A	B	C	D	E
LPV DA	4419/18		200 (200-½)		
LNAV/VNAV DA	4571/30		352 (400-¾)		
LNAV MDA	4700/24		481 (500-½)		
			4700/50 481 (500-1)		

HIRL all Rwys
TDZ/CL Rwys 16L, 16R, 17, 35, 34L, and 34R

SW-4, 31 OCT 2024 to 28 NOV 2024

SW-4, 31 OCT 2024 to 28 NOV 2024