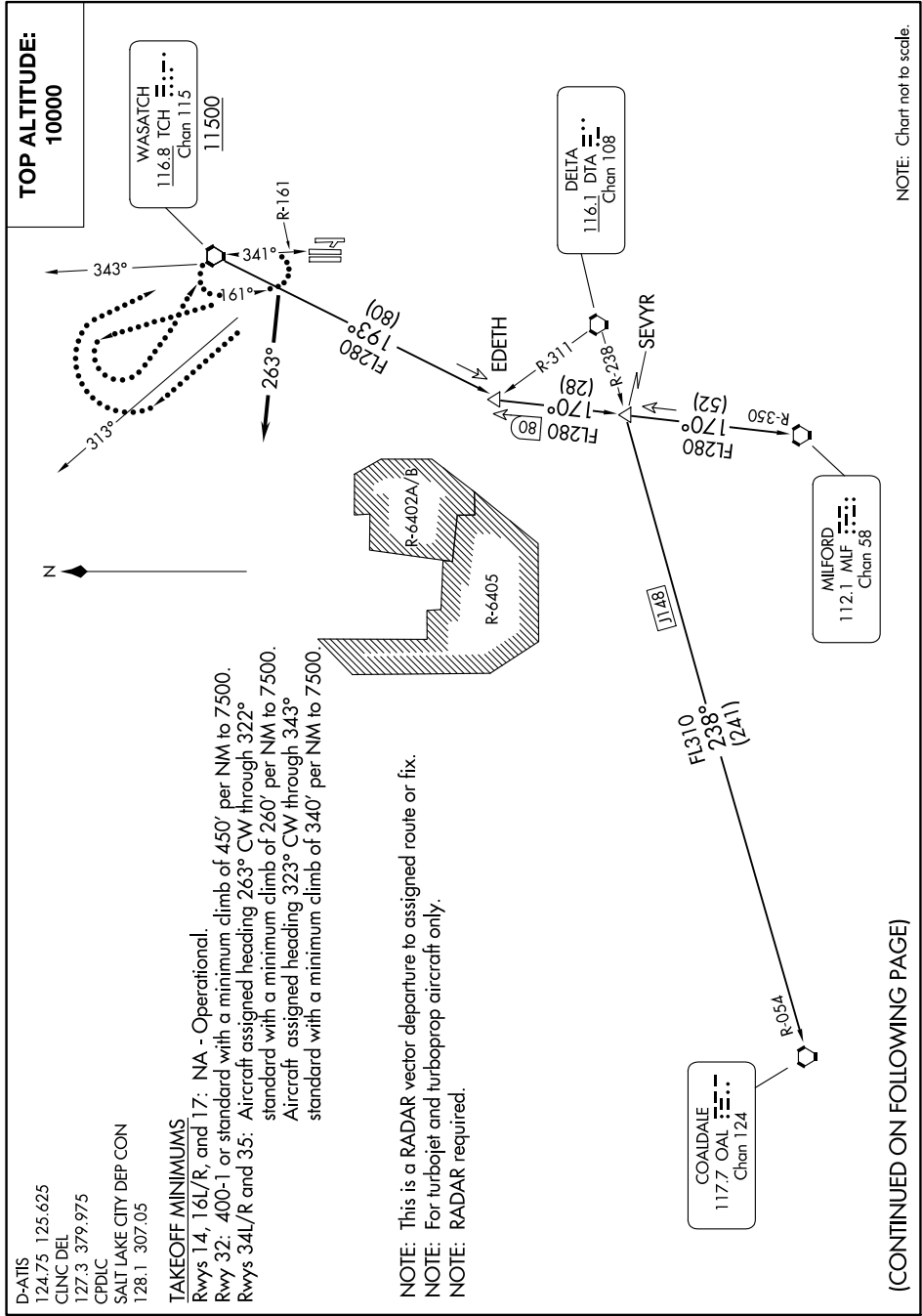


SW-4, 31 OCT 2024 to 28 NOV 2024



NOTE: Chart not to scale.

D-ATIS 124.75 125.625
 CINCDEL 127.3 379.975
 CPD/C 128.1 307.05
 SALT LAKE CITY DEP CON

TAKEOFF MINIMUMS

Rwys 14, 16L/R, and 17: NA - Operational.
 Rwy 32: 400-1 or standard with a minimum climb of 450' per NM to 7500.
 Rwys 34L/R and 35: Aircraft assigned heading 263° CW through 322° standard with a minimum climb of 260' per NM to 7500.
 Aircraft assigned heading 323° CW through 343° standard with a minimum climb of 340' per NM to 7500.

NOTE: This is a RADAR vector departure to assigned route or fix.
 NOTE: For turbojet and turboprop aircraft only.
 NOTE: RADAR required.

(CONTINUED ON FOLLOWING PAGE)

SW-4, 31 OCT 2024 to 28 NOV 2024