

(DYAMD.DYAMD5) 19003

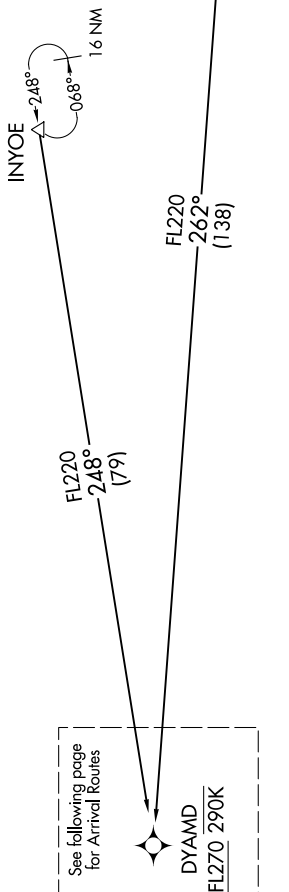
AL-375 (FAA)

SAN FRANCISCO INTL (SFO)

DYAMD FIVE ARRIVAL (RNAV) Transition Routes

SAN FRANCISCO, CALIFORNIA

OAKLAND CENTER
 134.37 281.5
 NORCAL APP CON
 128.325 254.3
 D-ATIS
 113.7 115.8 118.85
 SAN FRANCISCO TOWER
 120.5 269.1
 GND CON
 121.8



- NOTE: RNAV 1.
- NOTE: DME/DME/IRU or GPS required.
- NOTE: Expect to receive "descend via" clearance from Oakland Center. Northern California TRACON will assign landing runway.
- NOTE: RADAR required for non-GPS equipped aircraft.

INYOE TRANSITION (INYOE.DYAMD5)
RUSME TRANSITION (RUSME.DYAMD5)

(CONTINUED ON FOLLOWING PAGE)

NOTE: Chart not to scale.

SW-2, 31 OCT 2024 to 28 NOV 2024

DYAMD FIVE ARRIVAL (RNAV) Transition Routes

(DYAMD.DYAMD5) 03JAN19

SAN FRANCISCO, CALIFORNIA
SAN FRANCISCO INTL (SFO)