

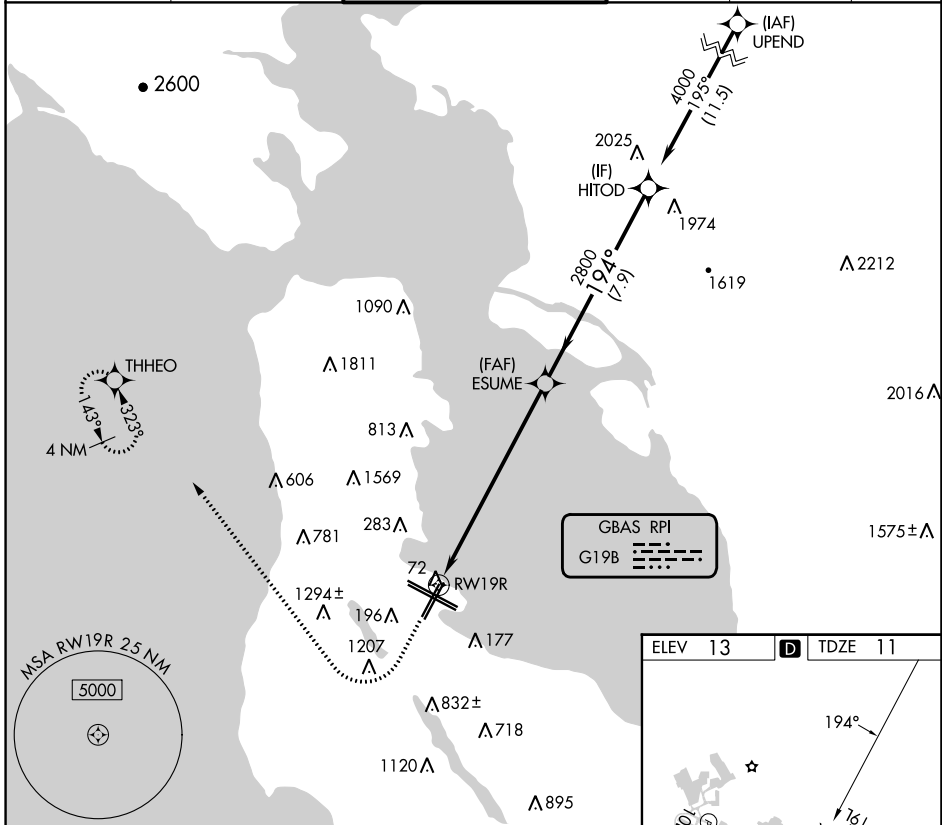
GBAS CH 21859 G19B	APP CRS 194°	Rwy Idg TDZE 11 Apt Elev 13	7650
--	------------------------	---	-------------

GLS RWY 19R

SAN FRANCISCO INTL (SFO)

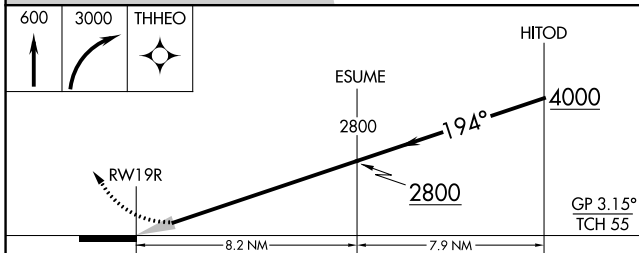
RNP APCH-GPS.		MISSED APPROACH: Climb to 600 then climbing right turn to 3000 direct THHEO and hold. Missed approach requires minimum climb of 395 feet per NM to 2100.		
Autopilot coupled approach NA below 321 feet.				

D-ATIS 113.7 115.8 118.85	NORCAL APP CON 134.5 338.2	SAN FRANCISCO TOWER 120.5 269.1	GND CON 121.8	CLNC DEL 118.2	CPDLC
---	--------------------------------------	---	-------------------------	--------------------------	-------

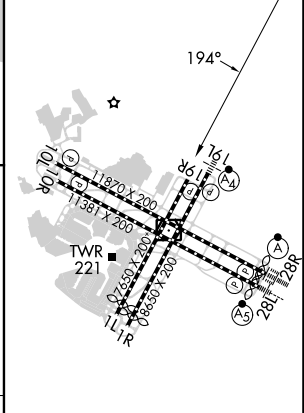


SW-2, 31 OCT 2024 to 28 NOV 2024

SW-2, 31 OCT 2024 to 28 NOV 2024



ELEV 13	D	TDZE 11
---------	----------	---------



CATEGORY	A	B	C	D
GLS DA	321/45		310 (400-7%)	

TDZ/CL Rwy 19L and 28R
REIL Rwy 1L, 1R and 10L
HIRL all Rwy